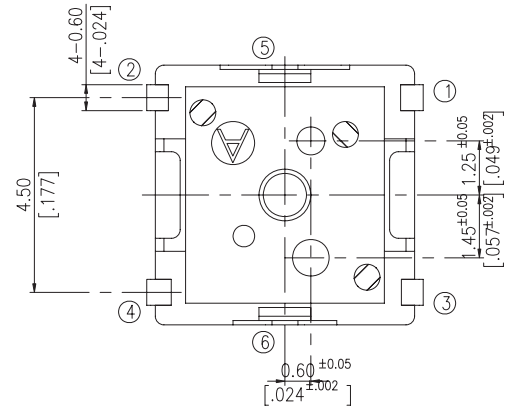
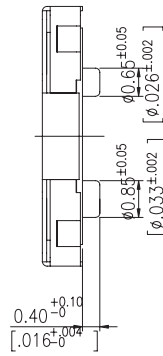
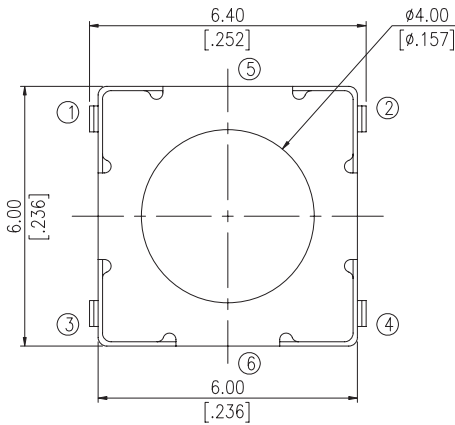


Multi-Direction Switches

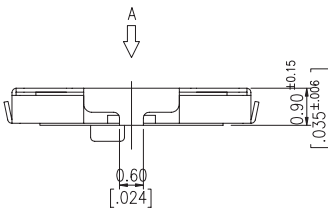
Miniature Double Action Switch

MB7 Series

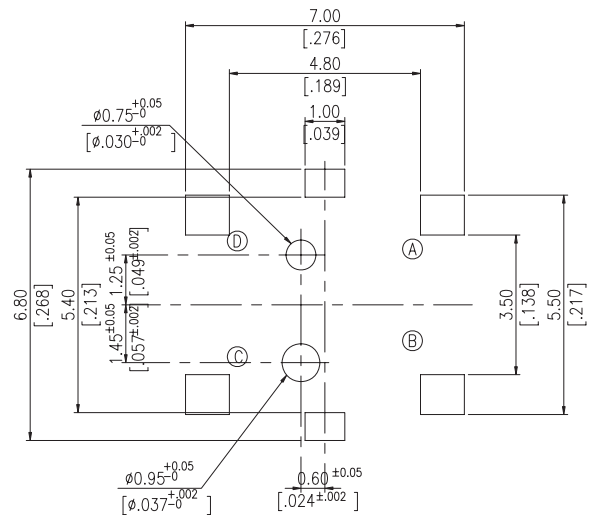
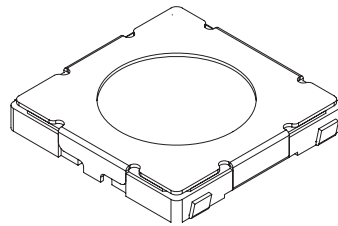
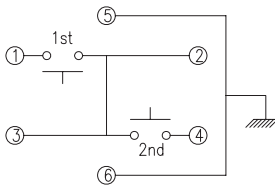
Unit: mm [inch]
General Tolerance: ± 0.2 mm



P.C.B. LAYOUT
(VIEW FROM THE DIRECTION A)



CIRCUIT



How to order:

MB7 1 2

1 TERMINAL TYPE:

J J Bend

2 PACKAGE STYLE:

TR Tape & Reel

General Specifications:

MECHANICAL

Operation Force: 1st 80 \pm 40gf
2nd 250 \pm 60gf

Stroke: 1st 0.25 \pm 0.1 mm
2nd 0.40 \pm 0.15 mm

Operation Temperature: -25°C to +70°C

Storage Temperature: -30°C to +80°C

ELECTRICAL

Electrical Life: 30,000 cycles

Rating: 50mA , 12VDC

Contact Resistance: 100m Ω max.

Insulation Resistance: 100M Ω min. at 100VDC

Dielectric Strength: 250VAC/1 minute

Contact Arrangement: 1 pole 2 throw

Multi-Direction Switches

Miniature Double Action Switch

MB7 Series

MATERIAL

COVER: Nickel silver

BASE: UL 94V-0 Nylon high-temp Thermoplastic Color: Black

DUST-PROOF: PTFE Color: White

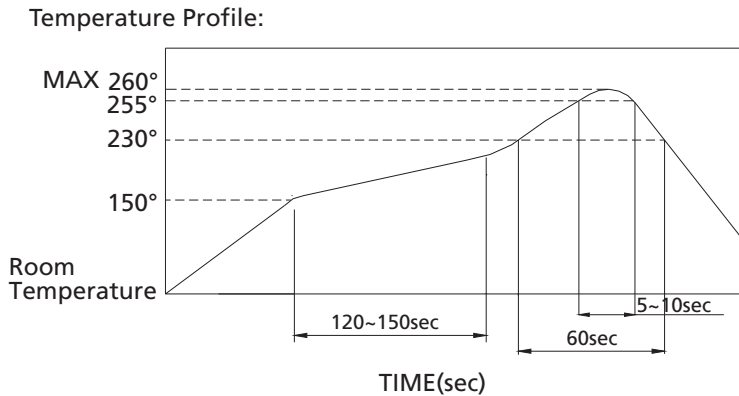
CONTACT DISC: Stainless with silver cladding

TERMINAL: Copper alloy with silver plated

SOLDERING PROCESS

HAND SOLDERING: Use a soldering iron of 30 watts, controlled 350°C approximately 5 seconds while applying.

REFLOW SOLDERING: When applying reflow soldering, the peak temperature of reflow oven should be set to 260°C max.



PACKING

4000/Reel

