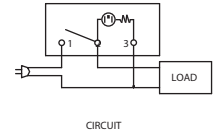
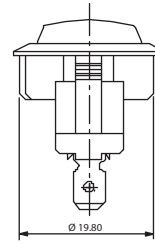
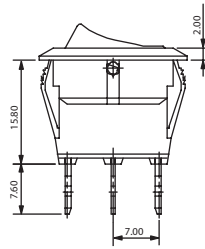
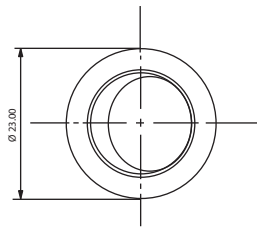


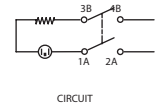
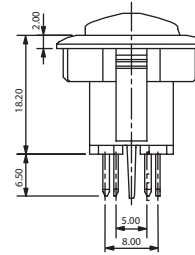
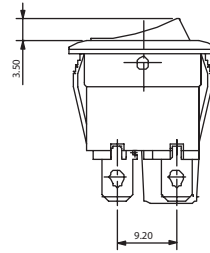
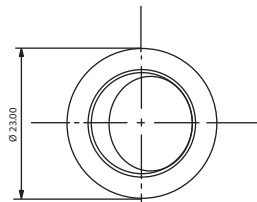
Rocker Switches

Ø23 mm Round illuminated Rocker Switches

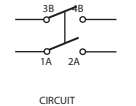
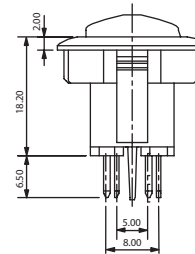
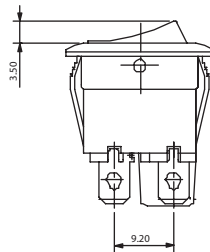
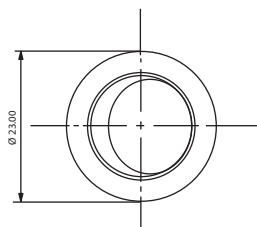
RK12 Series



RK12S Single Pole



RK12D_U Double Poles illuminated



RK12D_N Double Poles non-illuminated

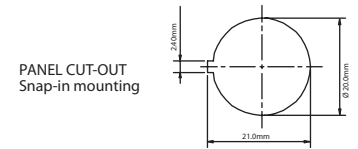
TERMINAL

- Q** 4.8mm TAB, 0.8mm Thick
- D1** Solder Tag Type 1
- D2** Solder Tag Type 2
- D3** Solder Tag Type 3
- H** Thru Hole Straight

ACTUATOR SHAPE

- | | |
|----------|----------|
| A | D |
| B | E |
| | |

PANEL SIZE



Note: The described Front Panel Mounting Hole is a proposal only and not universally valid. We recommend that customers test the applicability of the Front Panel Mounting Hole with switch samples and define the fitting Front Panel Mounting Hole measurements individually.

How to order:

RK12

- | | |
|---|--|
| <p>1 POLES:
S Single Pole
D Double Poles</p> <p>2 SWITCHING:
1 ON - OFF
2 ON - ON (RK12S Only)</p> <p>3 TERMINAL
Q (See above drawings):
D1 Quick Connect
D2 Solder Tag Type 1
D3 Solder Tag Type 2
H Solder Tag Type 3
Thru Hole Straight</p> <p>4 ACTUATOR MARKING:
A See above drawings
B See above drawings
C See above drawings
D See above drawings
E See above drawings
F See above drawings</p> | <p>5 ILLUMINATION:
N No Illuminated (Standard)
T No Illuminated with transparent Rocker
Illuminated</p> <p>6 BASE COLOR:
A Black
H Grey
B White</p> <p>7 ACTUATOR COLOR:
A Black
H Grey
B White
C Red
F Green
D Orange
G Blue (RK12S Only)
E Yellow (RK12D Only)</p> |
|---|--|

General Specifications:

FEATURES

- » Round rocker switch
- » Single pole or double pole
- » Illuminated or non-illuminated

MATERIALS of RK12S

- » Contact Arm (RK12S): Silver plated copper alloy
- » Movable Contact Arm (RK12D): Phosphorus bronze
- » Movable Contact (RK12D): Silver alloy
- » Terminals: Silver plated copper
- » Lamp: Neon for AC; Tungsten bulb for DC
- » Spring: Piano wire

MECHANICAL

- » Temperature Range: -20°C to +125°C

ELECTRICAL

- » Electrical Life: 10,000 cycles
- » Rating (RK12S): 20A125VAC, 12A250VAC
10A125VAC / 6A250VAC
6A125VAC / 3A250VAC
6A250VAC
10(4)A250VAC~T125
- » Rating (RK12D): 12A125VAC, 10A250VAC
10A125VAC / 8A250VAC
10A250VAC
10(4)A250V~T125/55
- » Initial Contact Resistance: 20m Ω max.
- » Insulation Resistance: 100M Ω min. at 500VDC