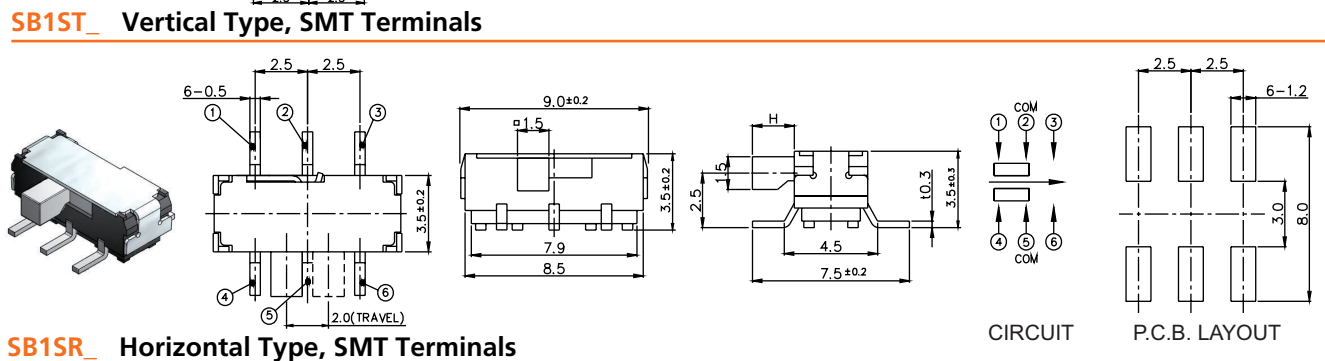
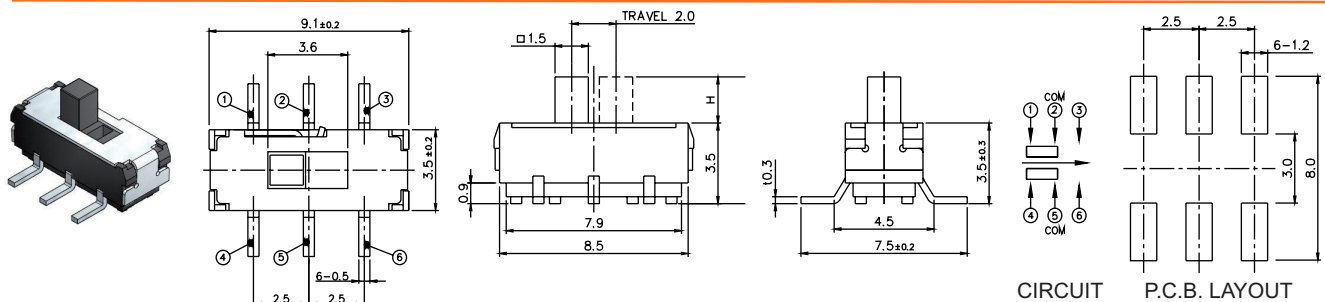
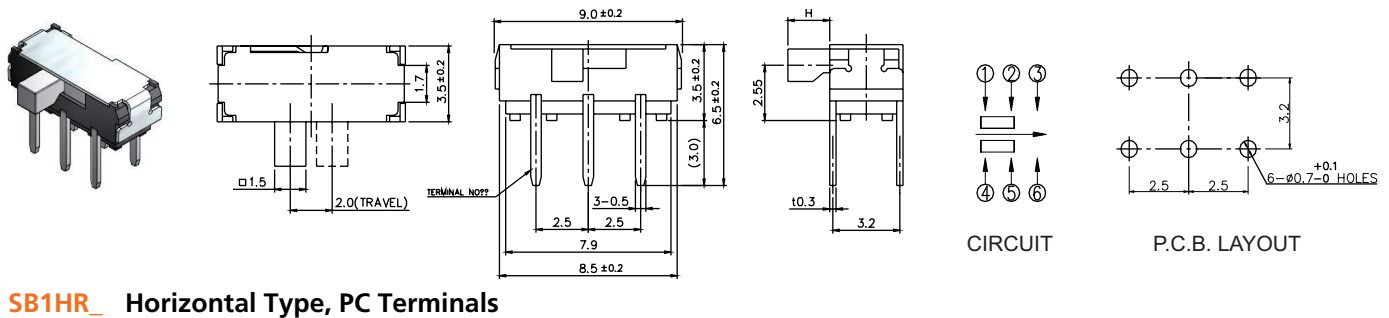
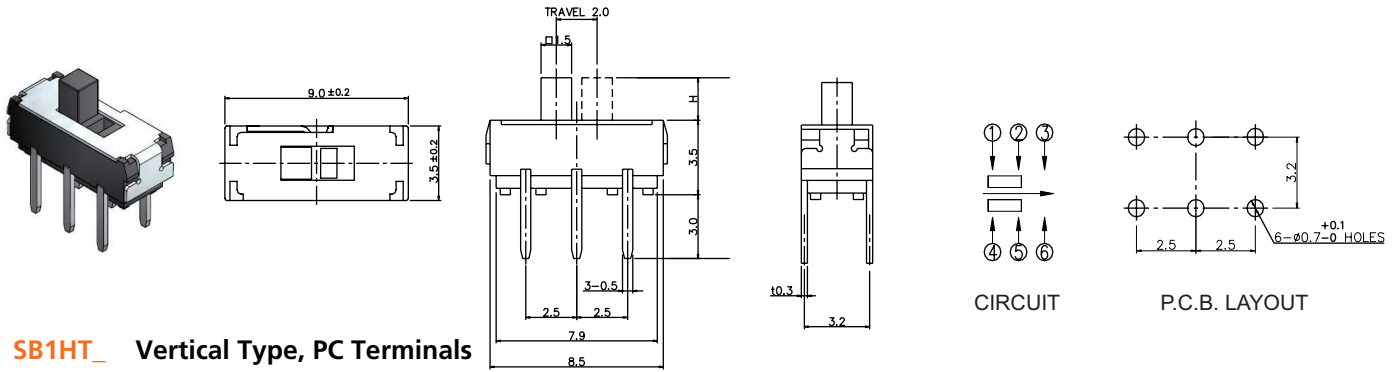


# Slide Switches

## 9 mm Slide Switches

## SB1 Series



### HOW TO ORDER:



#### 1 TYPE OF TERMINALS:

- H PC Terminals
- S Surface Mounting Type Terminals

#### 2 TYPE OF ACTUATING:

- T Vertical Type (Top Actuating)
- R Horizontal Type (Side Actuating)

#### 3 LENGTH OF ACTUATOR (Dimension "H"):

- 2 2.0 mm
- 4 4.0 mm

Unit: MM  
Tolerance unless otherwise stated: 0.1mm

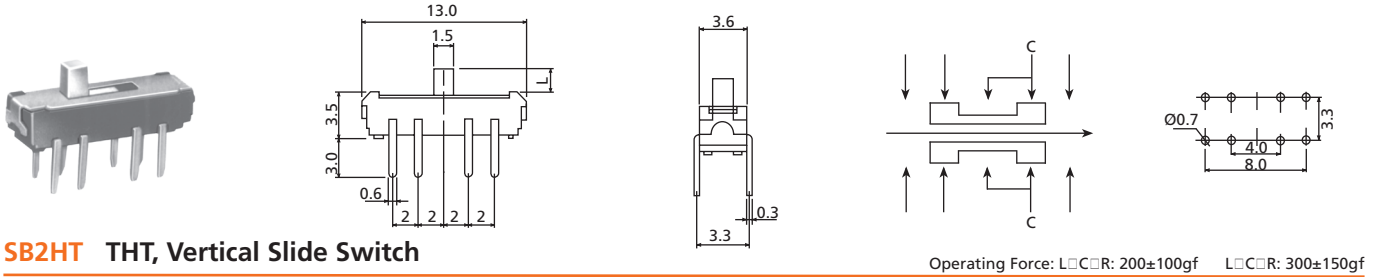
### SPECIFICATIONS:

- > Rating: 0.3A 6VDC
- > Contact Resistance: 70 mohm Max.
- > Insulation Resistance: 100 Mohm Min. 500VDC
- > Dielectric Strength: 500VAC 1 Minute
- > Circuit: 2C-2P
- > Timing: Non-Shorting
- > Travel: 2± 0.1 mm
- > Operating Force: 200±100 gf
- > Operating Life: 10,000 Cycles
- > Operating Temp.: -40°C~+85°C
- > Soldering: 350±5°C 4 Sec. Max. (Manual)  
260°C 5 Sec. Max. (Reflow)
- > Packaging: Bulk (by PC Terminals Type)  
Reel (by SMT Terminals Type)

# Slide Switches

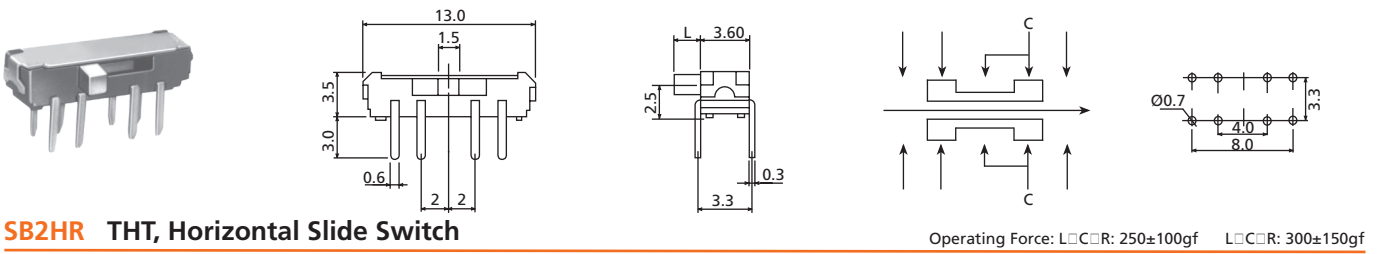
## 13 mm Slide Switches

## SB2 Series



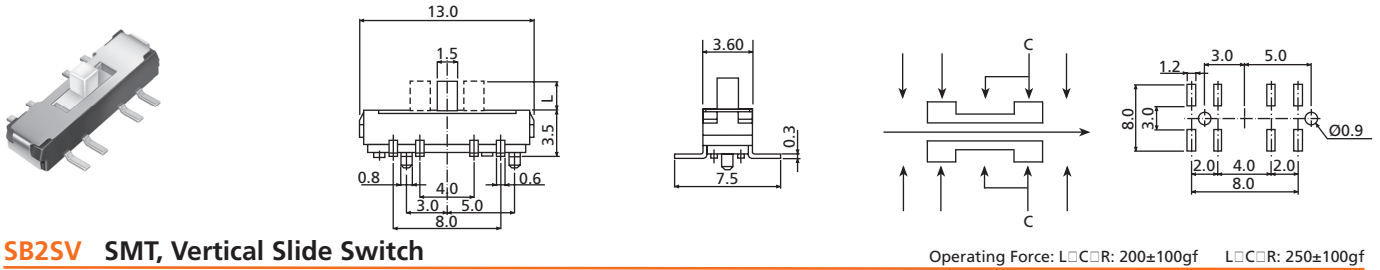
**SB2HT THT, Vertical Slide Switch**

Operating Force: L□C□R: 200±100gf L□C□R: 300±150gf



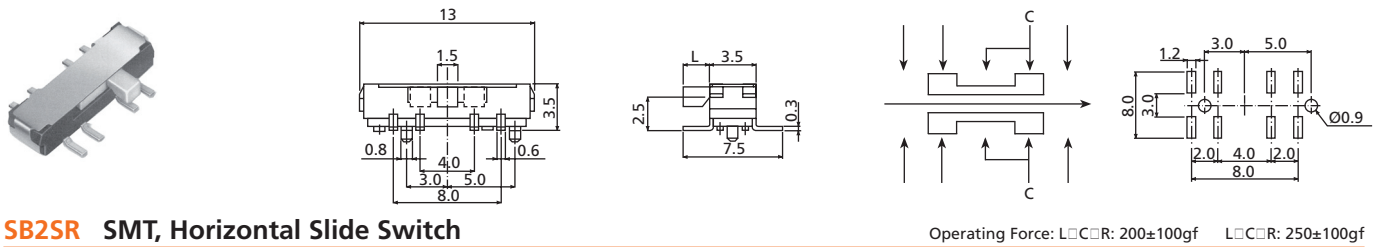
**SB2HR THT, Horizontal Slide Switch**

Operating Force: L□C□R: 250±100gf L□C□R: 300±150gf



**SB2SV SMT, Vertical Slide Switch**

Operating Force: L□C□R: 200±100gf L□C□R: 250±100gf



**SB2SR SMT, Horizontal Slide Switch**

Operating Force: L□C□R: 200±100gf L□C□R: 250±100gf

### How to order:

SB2

#### 1 TYPE OF TERMINALS:

- S SMT
- H THT

#### 2 TYPE OF ACTION:

- T Vertical
- R Horizontal

#### 3 HEIGHT OF KNOB (L):

- 2 L = 2.0 mm
- 4 L = 4.0 mm

### General Specifications:

**Rating:** DC6V 0.3A

**Circuit:** 2C-3P

**Timing:** Non-Shorting

**Travel:** 2 + 2 ± 0.1 mm

**Operating Force:** 200 ± 100 gf

Slide Switches