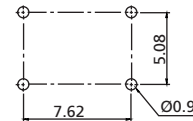
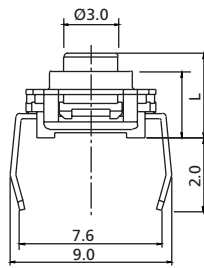
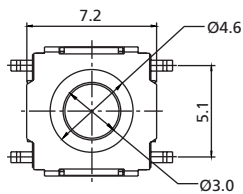


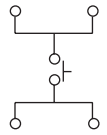
Tactile Switches

7.2 x 7.2 mm Sealed Tactile Switches

TP7 Series

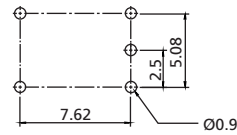
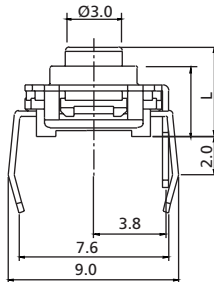
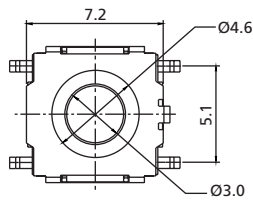


PCB LAYOUT

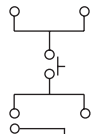


CIRCUIT

TP7T THT Terminals without Earth

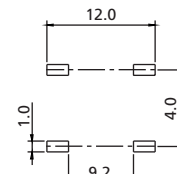
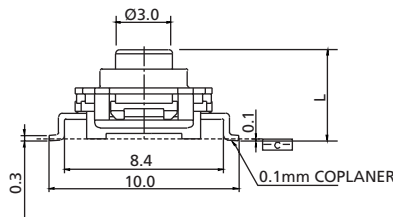
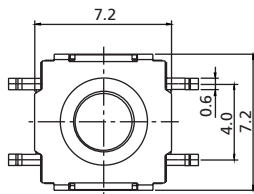


PCB LAYOUT

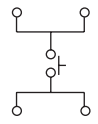


CIRCUIT

TP7TE THT Terminals with Earth

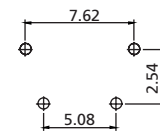
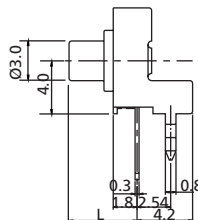
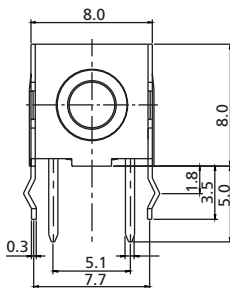


PCB LAYOUT

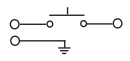


CIRCUIT

TP7S SMT Terminals



PCB LAYOUT



CIRCUIT

TP7RT THT Terminals Right Angle

How to order:

TP7 1 2 3 4

1 TYPE OF TERMINALS:

- T** THT Terminals without Earth
- TE** THT Terminals with Earth
- S** SMT Terminals
- RT** THT Terminals Right Angle

3 OPERATING FORCE:

- L** 130 gf
- N** 160 gf
- H** 300 gf
- S** 500 gf

2 DIMENSION L :

- 47** L=4.7mm (Only for TP7T, TP7TE & TP7S)
- 52** L=5.2mm (Only for TP7T, TP7TE & TP7S)
- 69** L=6.9mm (Only for TP7T, TP7TE & TP7S)
- 10** L=10mm (Only for TP7T, TP7TE & TP7S)
- 35** L=3.5mm (Only for TP7RT)
- 40** L=4.0mm (Only for TP7RT)
- 57** L=5.7mm (Only for TP7RT)
- 87** L=8.7mm (Only for TP7RT)

4 PACKAGING:

- TB** Tube
- TR** Tape&Reel (only for SMT)

General Specifications:

FEATURES

- » Positive tactile feedback
- » Sealed against flux soldering
- » Unique dust-proof construction

MATERIALS

- » Contact: Stainless steel / Phosphor bronze

MECHANICAL

- » Travel: 0.5 ± 0.2 mm
- » Operating Life: 1,000,000 cycles for stainless contact; 100,000 cycles for phosphor contact
- » Operating Temperature: -20°C ~ +85°C

ELECTRICAL

- » Rating: DC 12V 50mA
- » Contact Resistance: 100mΩ max.