

EC89SD5NBFSMT With Switch Travel 0.5mm, SMT Type

How to order:

EC89

1 SWITCH FUNCTION:

- S With Switch
- blank Without Switch

2 SWITCH TRAVEL (EC89S only)

Code	Travel
D	Switch Travel 0.5
E	Switch Travel 1.5

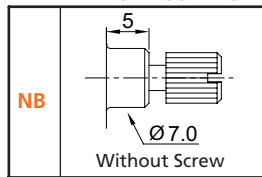
3 TYPE OF ENCODER :

- blank Vertical SMT

Code	Terminals
V	Vertical P.C.B.

4 LENGTH OF BUSHING :
5 5mm (Standard)

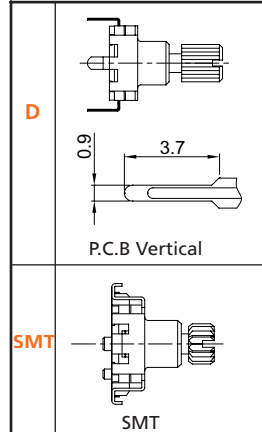
5 TYPE OF BUSHING:



6 FRAME

- F With Frame

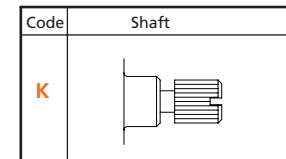
7 TYPE OF TERMINALS:



8 LENGTH OF SHAFT (L) :

- ... See drawings

9 TYPE OF SHAFT:



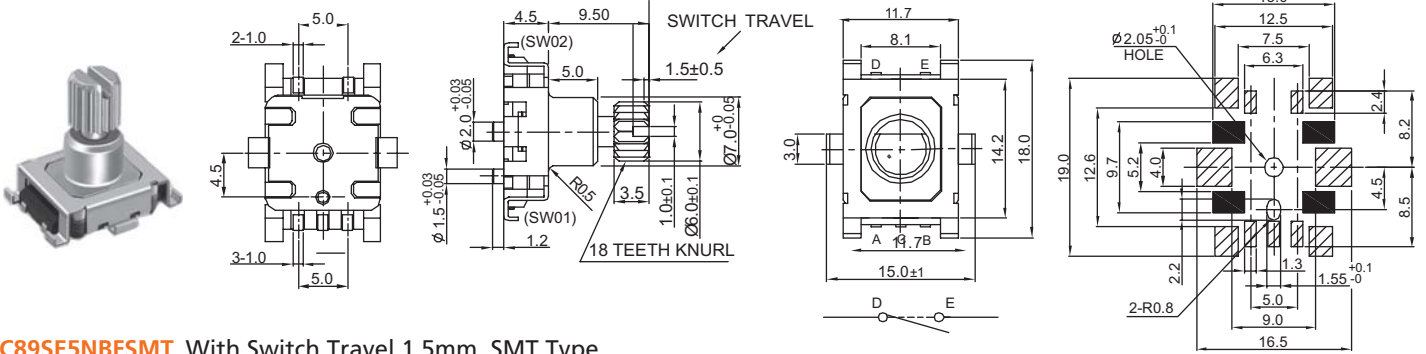
10 OUTPUT PULSE & DETENT:

- 15P30C 15 Pulse 30 Deten
- 15P 15 Pulse none Deten

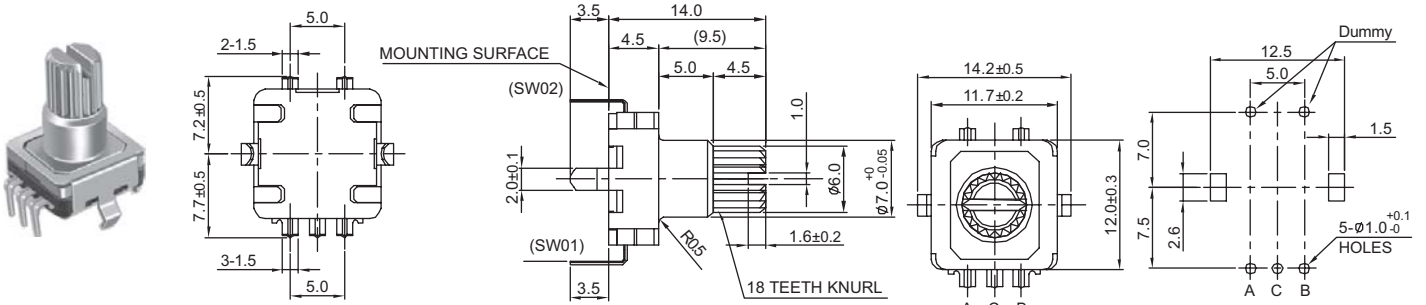
Encoders

11 mm Slim Type Encoders

EC89 Series

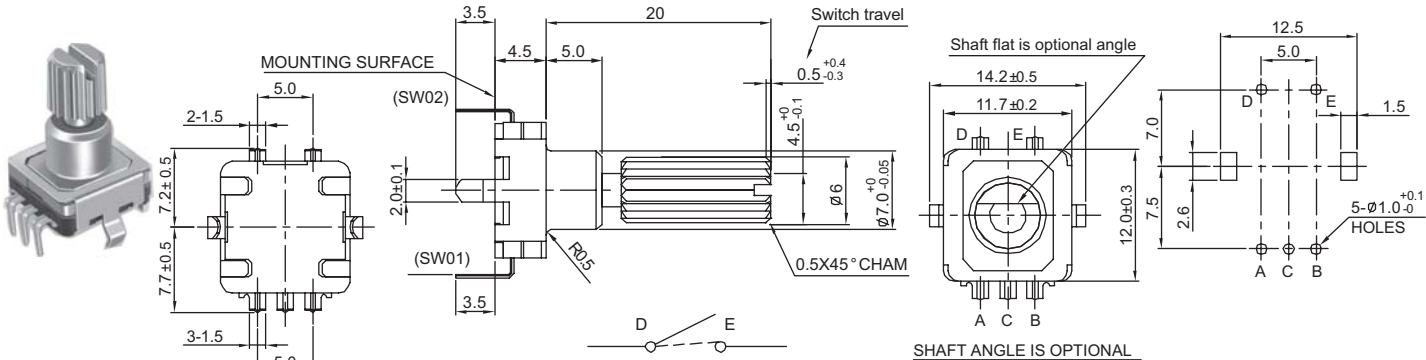


EC89SE5NBFSMT With Switch Travel 1.5mm, SMT Type



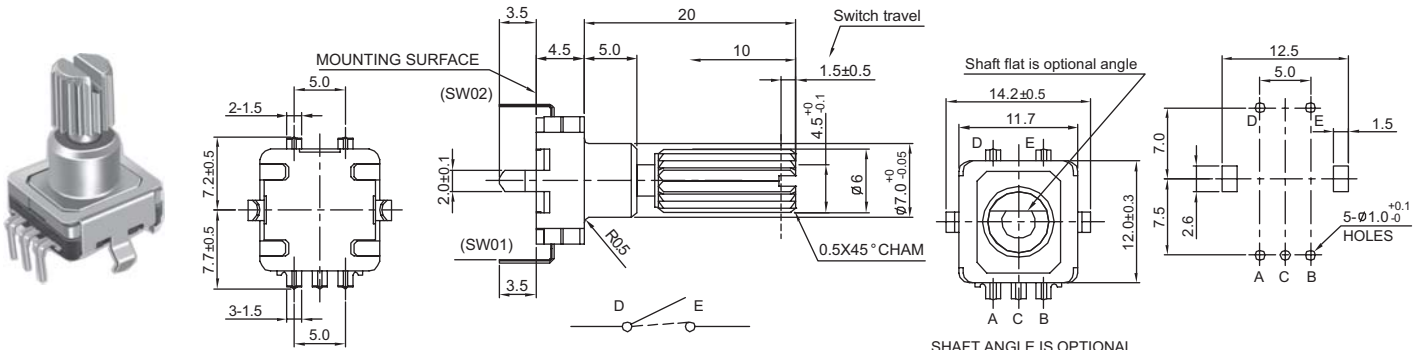
EC89V5NBF D Without Switch, P.C.B Type

SHAFT ANGLE IS OPTIONAL



EC89SDV5NBF D With Switch Travel 0.5mm, P.C.B Type

SHAFT ANGLE IS OPTIONAL



EC89SEV5NBF D With Switch Travel 1.5mm, P.C.B Type

SHAFT ANGLE IS OPTIONAL

Products Specifications

Pulse	Number of detent	Phase difference (msec)	Chattering (msec)	Sliding noise (msec)	Insulation resistance	Dielectric strength	Detent torque (gf·cm)	Rotational life (cycle)
15	30	6 min.	2 max.	2 max.	250V DC 100MΩ MIN	300V AC 1 min	100±70	15,000

Switch Specifications

Rating	Contact resistance	Insulation resistance	Dielectric strength	Contact arrangement	Travel of switch (mm)	Operating force (gf)	Operating life (cycle)
DC 5V	100mΩ	250V DC 100MΩ MIN	300V AC 1 min	PUSH ON	0.5	300±100	20,000
					1.5	400±200	