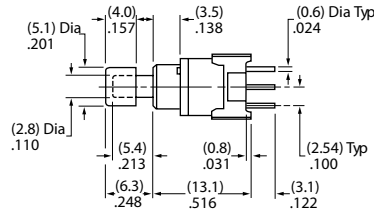
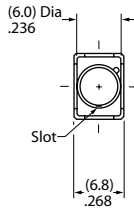
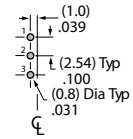
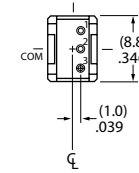


Straight PC



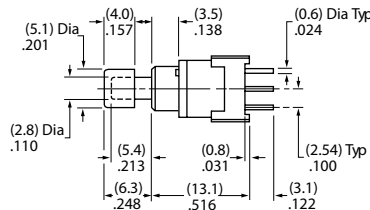
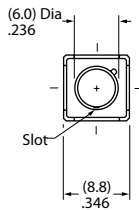
BB15AP-FA

Single Pole



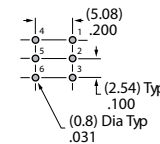
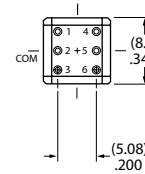
Momentary

Straight PC



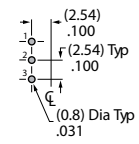
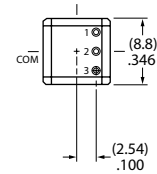
BB25AP-FA

Double Pole



Momentary & Alternate

BB16AP



Alternate

POLES & CIRCUITS

		Plunger Position () = Momentary		Connected Terminals		Throw & Schematics
Pole	Model	Normal 	Down 	Normal 	Down 	
SP	BB15 BB16	ON ON	(ON) ON	2-3	2-1	SPDT
DP	BB25 BB26	ON ON	(ON) ON	2-3 5-6	2-1 5-4	DPDT

Note: Terminal numbers are not actually on the switch.

How to order:



- 1 POLES:**
 - 1 SPDT
 - 2 DPDT
- 2 CIRCUITS:**
 - 5 ON-(ON)
 - () = Momentary
 - 6 ON-ON
 - Alternate Action has Latchdown.
 - BB16 has a Double Pole case.
- 3 PLUNGER:**
 - A 5.4mm (.213") long

- 4 PC TERMINALS:**
 - P Straight
 - B Straight with Bracket
 - H Right Angle with Bracket
 - V Vertical with Bracket
 - W Straight Long
 - Bracketed models are ESD protected.
- 5 CAPS:**
 - F 5.1mm (.201") Diameter
 - H 7.5mm (.295") Diameter

- 6 CAP COLORS:**
 - A Black
 - B White
 - C Red

General Specifications:

ELECTRICAL CAPACITY (Resistive Load)
 » Logic Level: 0.4VA max. @28V AC/DC max.
 (Applicable Range 0.1mA~0.1A@20mV~28V)

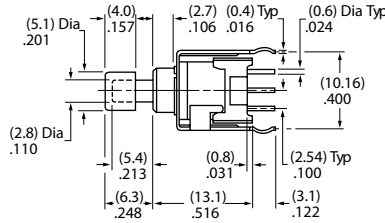
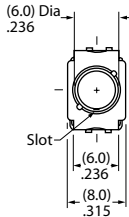
OTHER RATINGS:
 » Contact Resistance: 50mΩ max.
 » Insulation Resistance: 500MΩ min. @500VDC
 » Mechanical Life: 50,000 operations min. for momentary;
 25,000 operations for alternate action
 » Electrical Life: 50,000 operations min. for momentary;
 25,000 operations for alternate action
 » Nominal Operating Force: 2.55N(momentary);
 2.94N(alternate action)
 » Contact Timing: Nonshorting
 » Travel Momentary: Pretravel: 0.7mm; Overtravel: 0.4mm;
 Total: 1.1mm
 » Travel Alternate: Pretravel: 1.0mm; Overtravel: 1.0mm;
 Total: 2.0mm

MATERIALS
 » Movable Contacts: Phosphor bronze with gold plating
 » Stationary Contacts: Brass with gold plating
 » Terminals: Copper alloy with gold plating

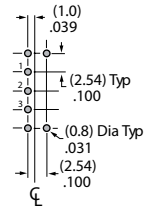
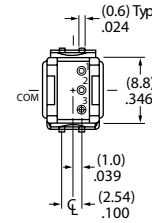
ENVIRONMENTAL DATA
 » Operating Temperature: -30°C through +85°C

SOLDERING
 » Manual Soldering: 3 seconds max. @ 350°C max.
 » Wave Soldering: 5 seconds max. @ 270°C max.

Straight PC • Bracket



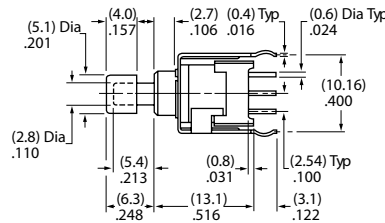
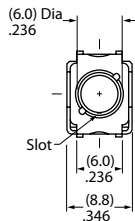
Single Pole



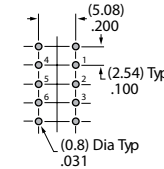
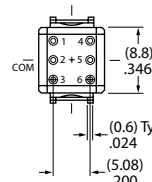
BB15AB-FA

Momentary

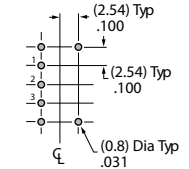
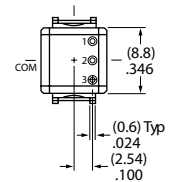
Straight PC • Bracket



Double Pole



BB16AB

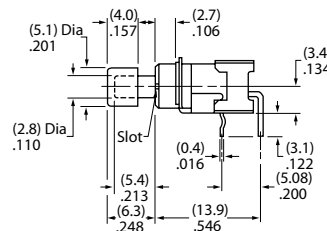
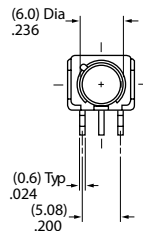


BB25AB-FA

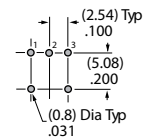
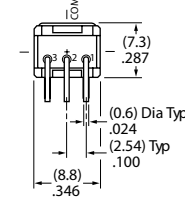
Momentary & Alternate

Alternate

Right Angle PC



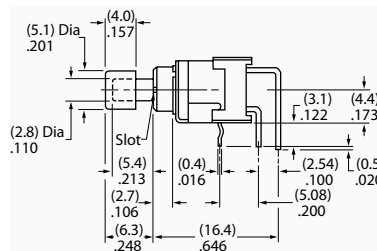
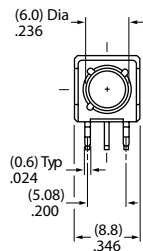
Single Pole



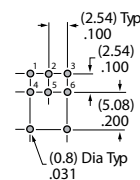
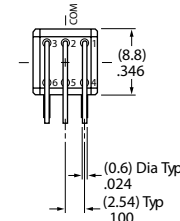
BB15AH-FA

Momentary

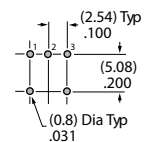
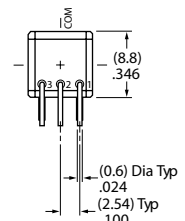
Right Angle PC



Double Pole



BB16AH



BB25AH-FA

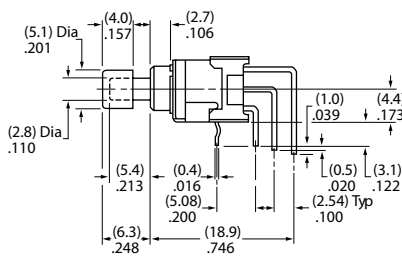
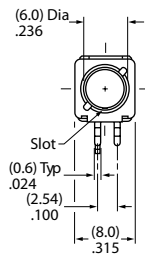
Momentary & Alternate

Alternate

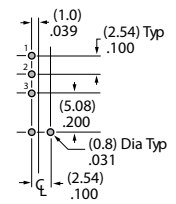
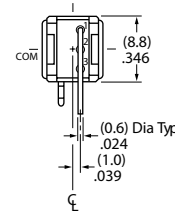
Vertical PC



BB15AV-FA



Single Pole

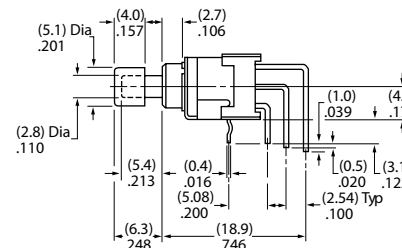
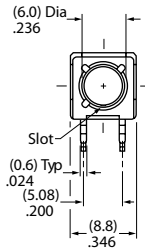


Momentary

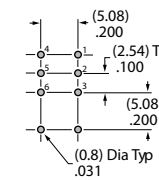
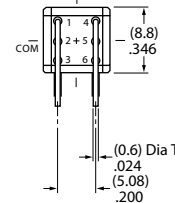
Vertical PC



BB25AV-FA

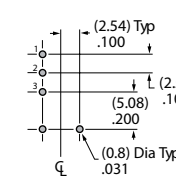
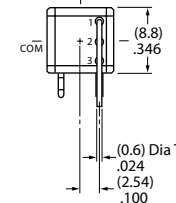


Double Pole



Momentary & Alternate

BB16AV



Alternate

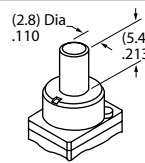
PLUNGERS

A .213" (5.4mm) Long

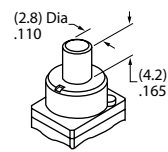
Standard Plunger Color: White

Contact factory for other colors and lengths.

Normal Position



Latchdown Position



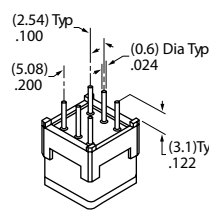
PC TERMINALS

Use of a support bracket is recommended to increase PCB mounting strength and stability.

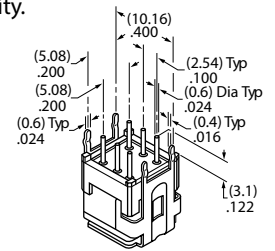
Both single pole and double pole alternate action models have double pole bases.

See Typical Switch Dimensions for details.

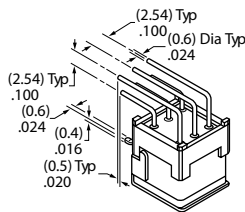
P Straight



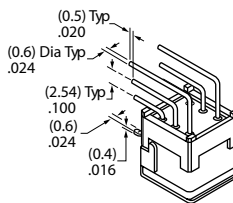
B Straight with Bracket



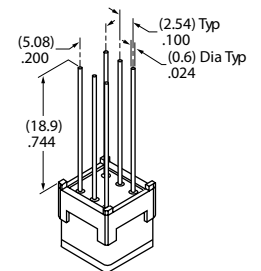
H Right Angle with Bracket



V Vertical with Bracket



W Straight Long

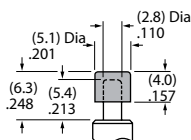


SLIP-ON CAPS

F AT475
.201" (5.1mm) Diameter Cap



Material: Polyamide



H AT496
.295" (7.5mm) Diameter Cap



Material: Polyamide

