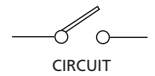
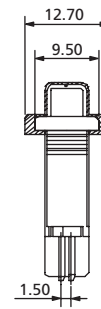
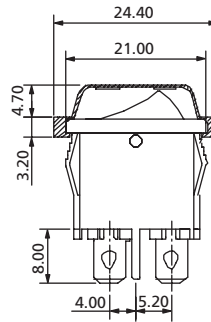
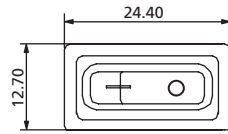


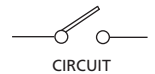
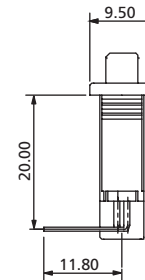
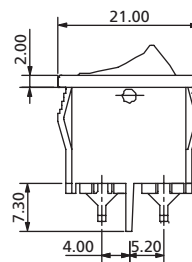
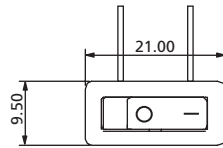
# Rocker Switches

## 21 x 9.5 mm Small Sized SP Rocker Switches

## RK7 Series



**RK7S1Q4\_ \_ \_ \_W** Quick Connect, with Waterproof Cover



**RK7S1R4\_ \_ \_ \_N** Thru Hole Right Angle, without Waterproof Cover

### TERMINAL

**Q** 4.8mm TAB, 0.8mm Thick

**D** Solder Tag

**R** Thru Hole Right Angle

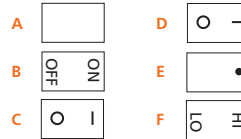
**H** Thru Hole Straight

### ACTUATOR

**4** Curve (No Illuminated)

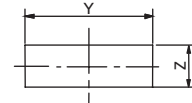


### ACTUATOR MARKING



### PANEL SIZE

PANEL CUT-OUT  
Snap-in mounting



X (Panel thickness)	Dim. Y (mm)	Dim. Z (mm)
0.75 to 1.25	12.90 +0.15/-0	6.65 ~ 6.75
1.25 to 2	12.90 +0.15/-0	6.65 ~ 6.75
2 to 3	12.90 +0.15/-0	6.65 ~ 6.75

## How to order:

RK7

**1** POLES:  
**S** Single Pole

**2** SWITCHING:  
**1** ON - OFF

**3** TERMINAL (See above drawings):  
**Q** 4.8mm TAB, 0.8mm THICK  
**D** Solder Tag  
**R** Thru Hole Right Angle  
**H** Thru Hole Straight

**4** ACTUATOR (See above drawings):  
**4** Curve

**5** ACTUATOR MARKING:  
**A** See above drawings  
**B** See above drawings  
**C** See above drawings  
**D** See above drawings  
**E** See above drawings  
**F** See above drawings

**6** BASE COLOR:  
**A** Black  
**H** Grey  
**B** White

**7** ACTUATOR COLOR:  
**A** Black  
**H** Grey  
**B** White  
**F** Green  
**D** Orange  
**C** Red  
**E** Yellow

**8** WATERPROOF COVER:  
**N** None Cover (Standard)  
**W** With Waterproof Cover

## General Specifications:

### FEATURES

- » Single pole half size rocker switch up to 12A 125VAC
- » Non illuminated

### MATERIALS

- » Movable Contact Arm: Phosphorus bronze
- » Movable Contact: Silver alloy
- » Stationary Contact: Silver alloy
- » Terminals: Silver plated copper

### MECHANICAL

- » Temperature Range: -20°C to +125°C

### ELECTRICAL

- » Electrical Life: 10,000 cycles
- » Rating: 12A125VAC, 10A250VAC 1/4HP  
10A, 6A 125VAC, 8A250VAC  
10A 250VAC  
10(4)A 250V~T125/55
- » Initial Contact Resistance: 20mΩ max.
- » Insulation Resistance: 100MΩ min. at 500VDC