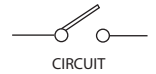
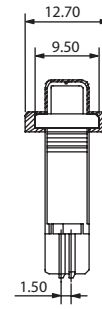
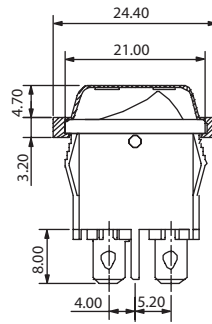
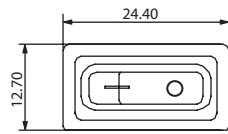


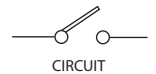
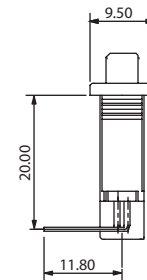
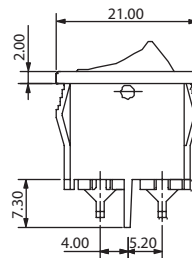
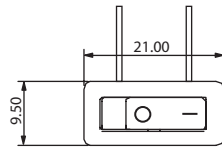
Rocker Switches

21x9.5mm Small Sized SP Rocker Switches

RK7 Series



RK7S1Q4___W Quick Connect, with Waterproof Cover



RK7S1R4___N Thru Hole Right Angle, without Waterproof Cover

TERMINAL	ACTUATOR	ACTUATOR MARKING	PANEL SIZE												
Q 4.8mm TAB, 0.8mm Thick D Solder Tag R Thru Hole Right Angle H Thru Hole Straight	4 Curve (No Illuminated) 	A B C D E F	PANEL CUT-OUT Snap-in mounting <table border="1"> <thead> <tr> <th>X (Panel thickness)</th> <th>Dim. Y (mm)</th> <th>Dim. Z (mm)</th> </tr> </thead> <tbody> <tr> <td>0.75 to 1.25</td> <td>12.90 +0.15/-0</td> <td>6.65 ~ 6.75</td> </tr> <tr> <td>1.25 to 2</td> <td>12.90 +0.15/-0</td> <td>6.65 ~ 6.75</td> </tr> <tr> <td>2 to 3</td> <td>12.90 +0.15/-0</td> <td>6.65 ~ 6.75</td> </tr> </tbody> </table>	X (Panel thickness)	Dim. Y (mm)	Dim. Z (mm)	0.75 to 1.25	12.90 +0.15/-0	6.65 ~ 6.75	1.25 to 2	12.90 +0.15/-0	6.65 ~ 6.75	2 to 3	12.90 +0.15/-0	6.65 ~ 6.75
X (Panel thickness)	Dim. Y (mm)	Dim. Z (mm)													
0.75 to 1.25	12.90 +0.15/-0	6.65 ~ 6.75													
1.25 to 2	12.90 +0.15/-0	6.65 ~ 6.75													
2 to 3	12.90 +0.15/-0	6.65 ~ 6.75													

How to order:

RK7

- | | |
|---|--|
| 1 POLES:
S Single Pole

2 SWITCHING:
1 ON - OFF

3 TERMINAL (See above drawings):
Q 4.8mm TAB, 0.8mm THICK
D Solder Tag
R Thru Hole Right Angle
H Thru Hole Straight

4 ACTUATOR (See above drawings):
4 Curve

5 ACTUATOR MARKING:
A See above drawings
B See above drawings
C See above drawings
D See above drawings
E See above drawings
F See above drawings | 6 BASE COLOR:
A Black
H Grey
B White

7 ACTUATOR COLOR:
A Black
H Grey
B White
F Green
D Orange
C Red
E Yellow

8 WATERPROOF COVER:
N None Cover (Standard)
W With Waterproof Cover |
|---|--|

General Specifications:

FEATURES

- » Single pole half size rocker switch up to 12A 125VAC
- » Non illuminated

MATERIALS

- » Movable Contact Arm: Phosphorus bronze
- » Movable Contact: Silver alloy
- » Stationary Contact: Silver alloy
- » Terminals: Silver plated copper

MECHANICAL

- » Temperature Range: -20°C to +125°C

ELECTRICAL

- » Electrical Life: 10,000 cycles
- » Rating: 12A125VAC, 10A250VAC 1/4HP
10A, 6A 125VAC, 8A250VAC
10A 250VAC
10(4)A 250V~T125/55
- » Initial Contact Resistance: 20m Ω max.
- » Insulation Resistance: 100M Ω min. at 500VDC