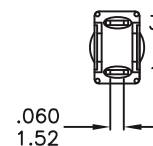
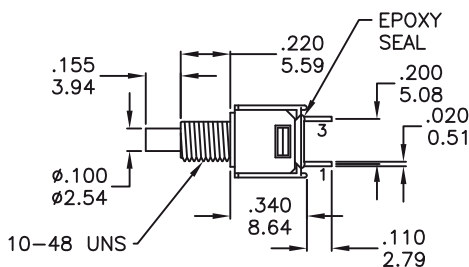
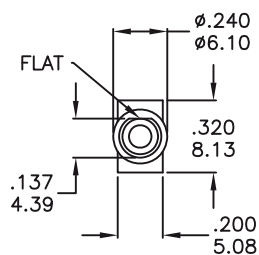


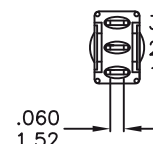
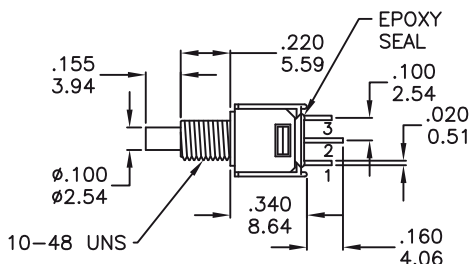
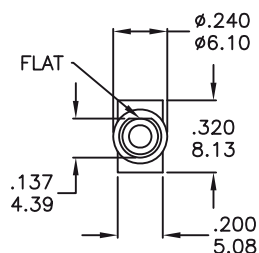
Pushbutton Switches

Sub-Miniature Pushbutton Switches

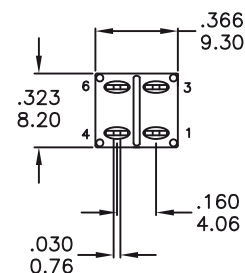
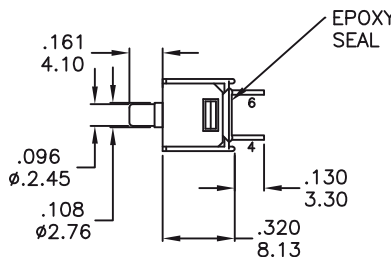
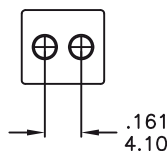
PB3 Series



PB3S9B5T1 SPST



PB3S8B5T1 SPDT



PB3D9NT2 DPST

How to order:

PB3

1 POLES & SWITCHING

- S7 SP ON-ON
- S8 SP ON-MOM
- S9 SP OFF-MOM
- D9 DP OFF-MOM

2 ACTUATOR:

blank 3.94 mm high (Standard)

3 BUSHING*:

- B5 5.59mm high, flat (thd)
- B6 5.59mm high, flat (non-thd)
- B7 5.59mm high (non-thd)
- B8 7.87mm high (non-thd)
- B9 7.87mm high (thd)
- B0 3.30 high
- BP Snap-in with frame
- N Without Bushing (Only PB3D9)

4 FRAME COLOR

- (only for Bushing BP):
- Black (Standard)
 - White
 - Red
 - Orange
 - Yellow
 - Green
 - Blue
 - Brown
 - Gray

5 TERMINALS:

- T1 Solder Lug
- T2 PC thru-hole
- T5 Wire wrap
- T6 Right angle, PC thru-hole
- T6N Right angle, snap-in, PC thru hole
- T7 Vertical right angle, PC thru hole
- T7N Vertical right angle, snap-in, PC thru-hole
- VS2 8.94 mm high, V-bracket
- V2N 8.94 mm high, snap-in V-bracket

6 CONTACT MATERIAL:

- AG Silver
- AU Gold
- UT Gold, tin-lead
- GT Silver, tin-lead
- UG Gold over silver, tin-lead
- UGT Gold over silver, tin-lead

7 SEAL:

- E Epoxy (Standard)
- N No Epoxy

8 ROHS & LEAD FREE:

- blank RoHS compliant
- V RoHS & lead free

9 CAP:

- C1 Cap1
- C3 Cap3
- C4 Cap4

10 CAP COLOR

- A Black (Standard)
- B White
- C Red
- D Orange
- E Yellow
- F Green
- G Blue
- H Brown
- K Gray

General Specifications:

MATERIALS

- » Movable Contact & Fixed Terminals:
 - AG, GT, UG & UGT: Silver plated over copper alloy
 - AU & UT: Gold over nickel plated over copper alloy

MECHANICAL

- » Operating Temperature: -30°C to +85°C
- » Mechanical Life: 50,000 cycles at full load

CONTACT RATING

- » AG, GT, UG & UGT: 3A 120VAC/28VDC
1A 250VAC
- » AU & UT: 0.4VA max. 20V max. (AC/DC)

ELECTRICAL

- » Contact Resistance: 20mΩ max. initial @ 2-4VDC
100mA for silver & gold plated contacts
- » Insulation Resistance: 1,000MΩ min.

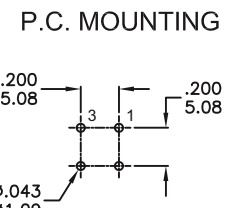
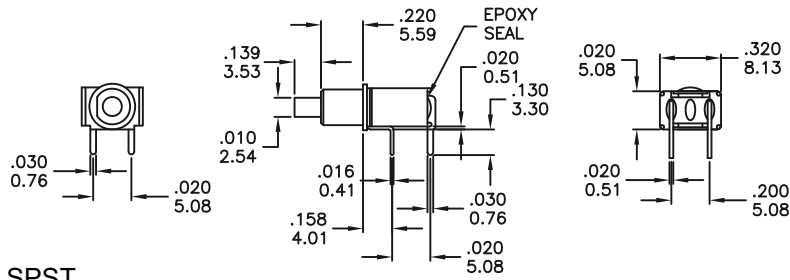
*BUSHING B7, B8, B9, B0, BP, N only for S8, S9, D9

All specifications are restricted to QA test criteria. DRW: B.R. JIN, CHK: P.G. GAO, APP: F. H. KANG, DC: 2009-07-02, UPD: 2025-03-11.

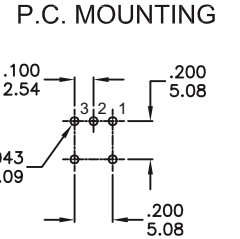
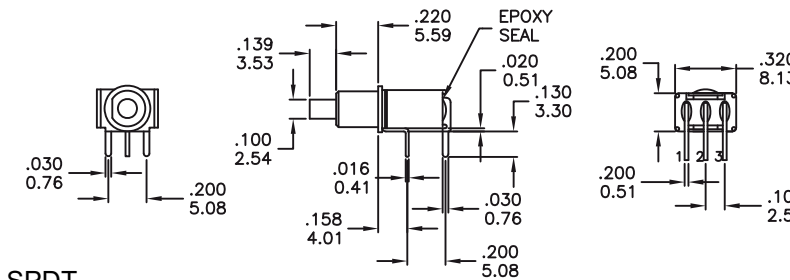
Pushbutton Switches

Sub-Miniature Pushbutton Switches

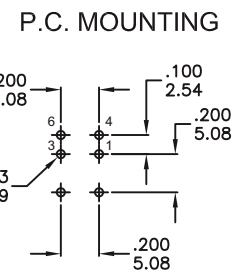
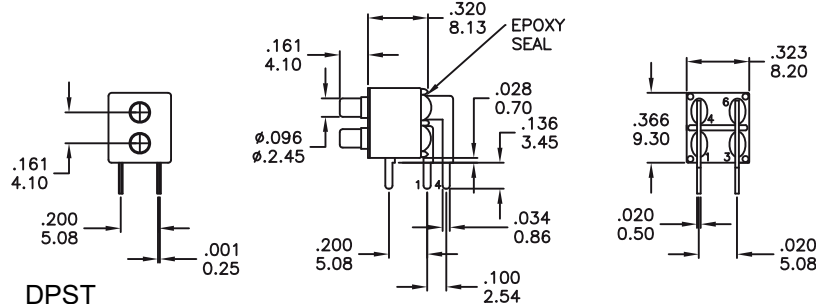
PB3 Series



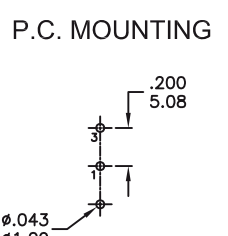
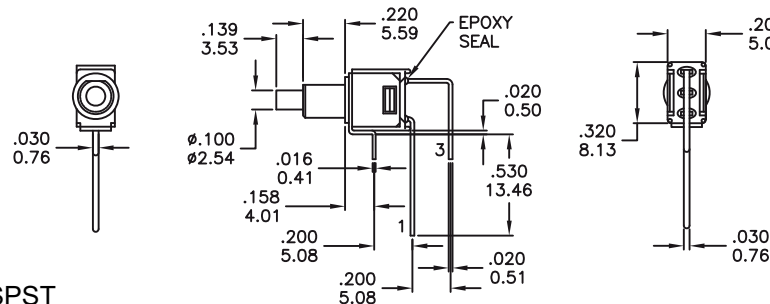
PB3S9B6T6 SPST



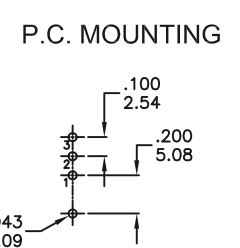
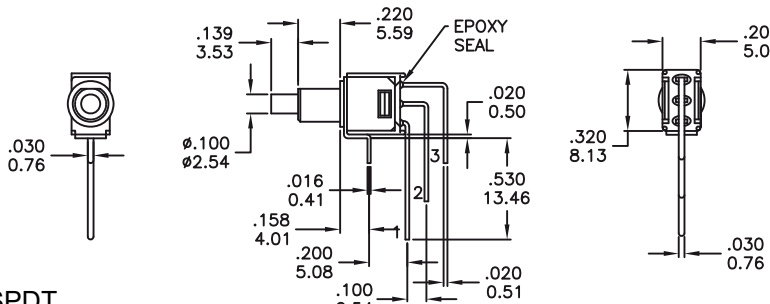
PB3S8B6T6 SPDT



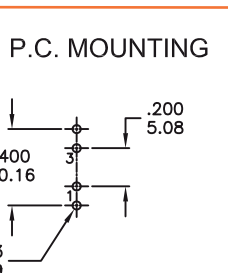
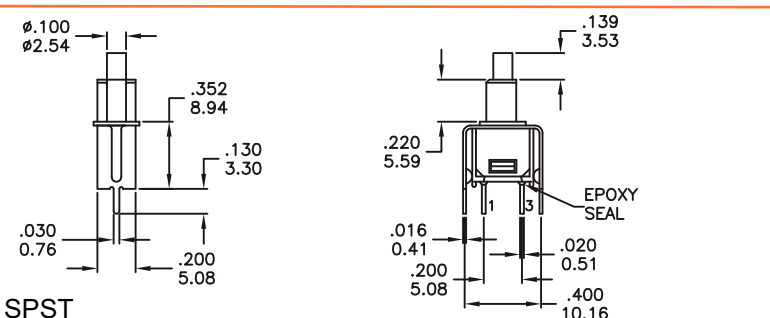
PB3D9NT6 DPST



PB3S9B6T7 SPST



PB3S8B6T7 SPDT



PB3S9B6VS2 SPST

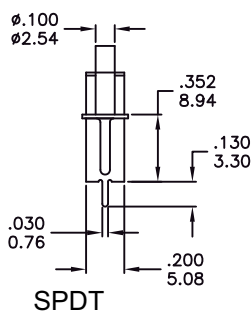
Pushbutton Switches

Sub-Miniature Pushbutton Switches

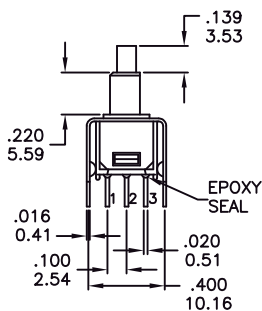
PB3 Series



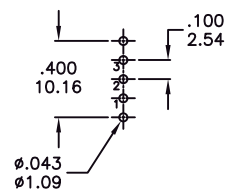
PB3S8B6VS2



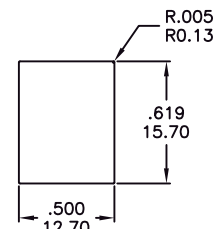
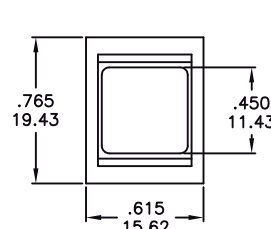
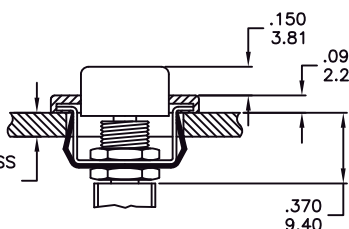
SPDT



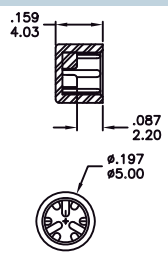
P.C. MOUNTING



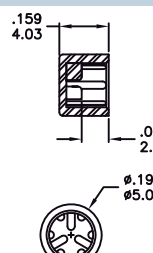
PB3S9BPAT1_C3A with Frame



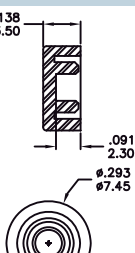
CAPS



C1



C3



C4

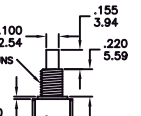
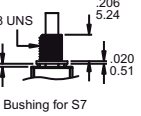
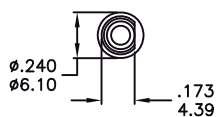
SWITCH FUNCTION

NO. POLES	MODEL NO.	SWITCH FUNCTION		CONNECTED TERMINALS		
		POS.1	POS.2	POS.1	POS.2	SCHEMATIC
SP	PB3S8	ON	MOM	2-1	2-3	
	PB3S9	OFF	MOM	OPEN	1-3	
DP	PB3D9	OFF	MOM	OPEN	1-3-4-6	

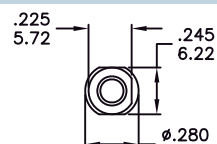
MOM=MENTORY

NO. POLES	MODEL NO.	SWITCH FUNCTION		CONNECTED TERMINALS		
		POS.1	POS.2	POS.1	POS.2	SCHEMATIC
SP	PB3S7	ON	ON	2-1	2-3	

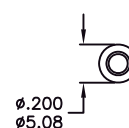
BUSHING OPTIONS



B7 Non-Thd

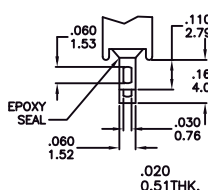


B8 Non-Thd

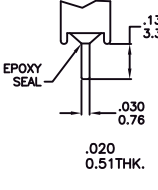


B9 Thd

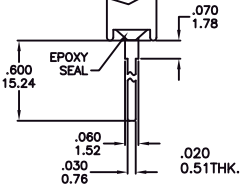
TERMINAL OPTIONS



T1 Solder Lug

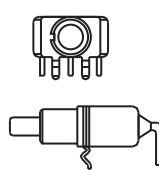


T2 PC Thru Hole

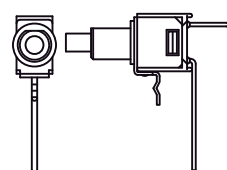


T5 Wire Wrap

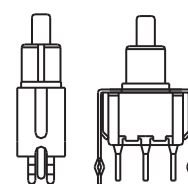
SNAP-IN TERMINAL OPTIONS



T6N



T7N



V2N

T6 Right Angle P.C. Mount

T7 Vertical Right Angle P.C. Mount

(see page 2)