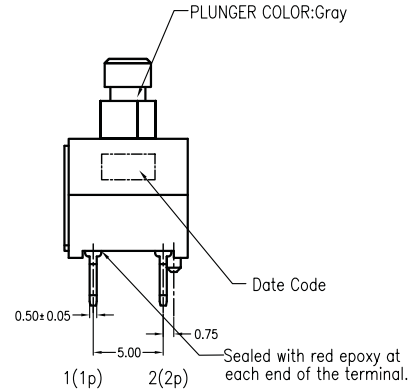
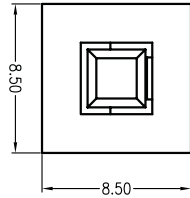


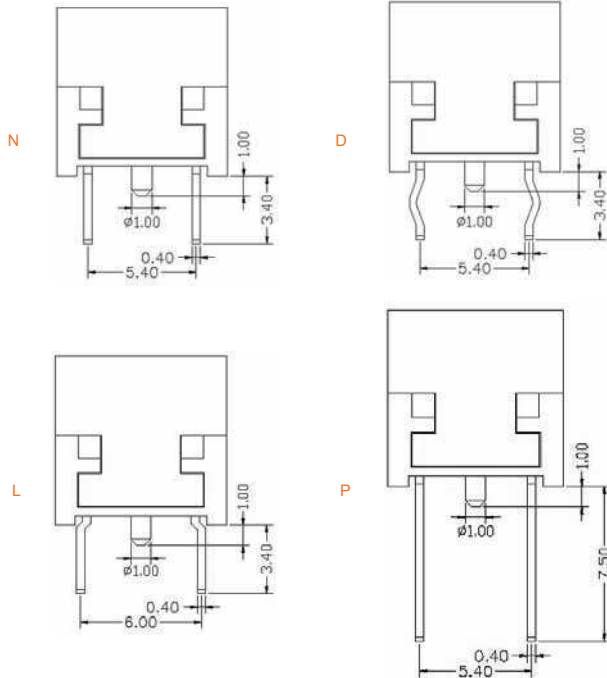
Pushbutton Switches

Vertical Push Switches

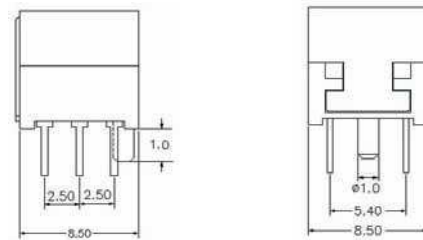
PB38 Series



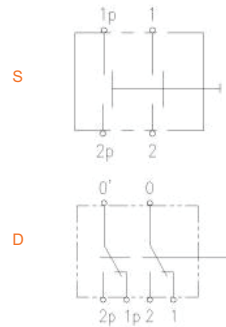
TERMINAL



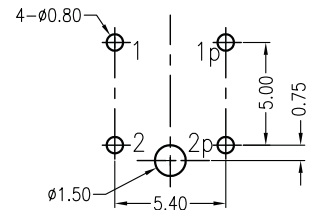
POSITION PIN



CIRCUIT DIAGRAM



P. C. MOUNTING



General Tolerance = ± 0.05mm

How to order:

PB38

- | | |
|------------------------------------------|---------------------------------|
| 1 POLES: | 4 ACTUATOR (See Page 2): |
| S 2P1T | 45 57 57B 65 90 90B 95 1125 |
| D 2P2T | 120 145 165 |
| 2 LOCK FUNCTION: | 5 OPERATING FORCE: |
| 1 Self-Lock | L 150±50 gf |
| 2 Non-Lock | N 240±50 gf |
| 3 TERMINALS (See above drawings): | M 350±50 gf |
| N Straight Terminals 5.4mm | H 450±50 gf |
| D Snap in Terminals 5.4mm | 6 SEAL: |
| L Straight Terminals 6mm | E Epoxy sealed base |
| P Straight Terminals 7.5mm | N Non-sealed base (standard) |

General Specifications:

FEATURES

» Vertical Push switch

MATERIALS

» Housing: UL 94V0
» Moving Contacts: Silver plated

MECHANICAL

» Operation Temperature : -40°C to + 85°C
» Travel-to-lock 1.5mm (Total travel: 2.5mm)
» Timing: Non-shorting

ELECTRICAL

» Rating : 0.10A 30VDC 100,000 cycles
1.00A 13VDC 20,000 cycles
» Contact Resistance: 50mW max. initial
» Insulation Resistance: 100 MW min.
» Dielectric Strength: 500VAC for 60 +/- 5 sec