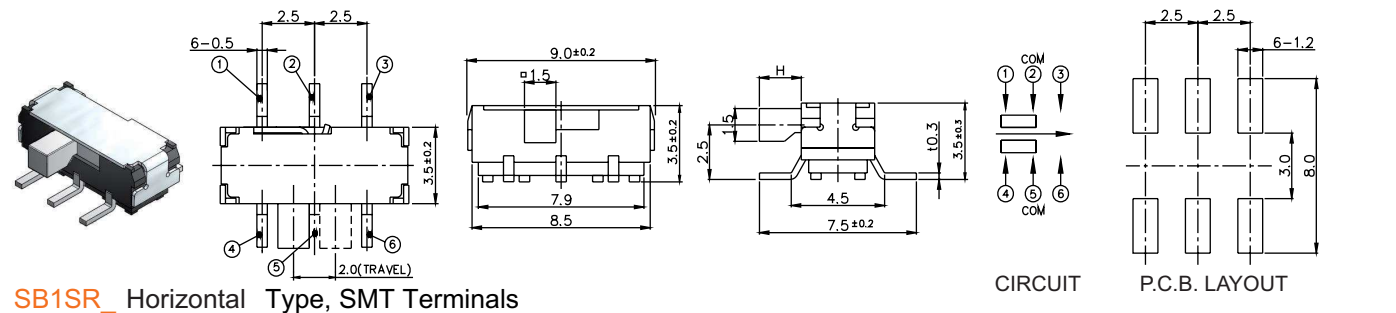
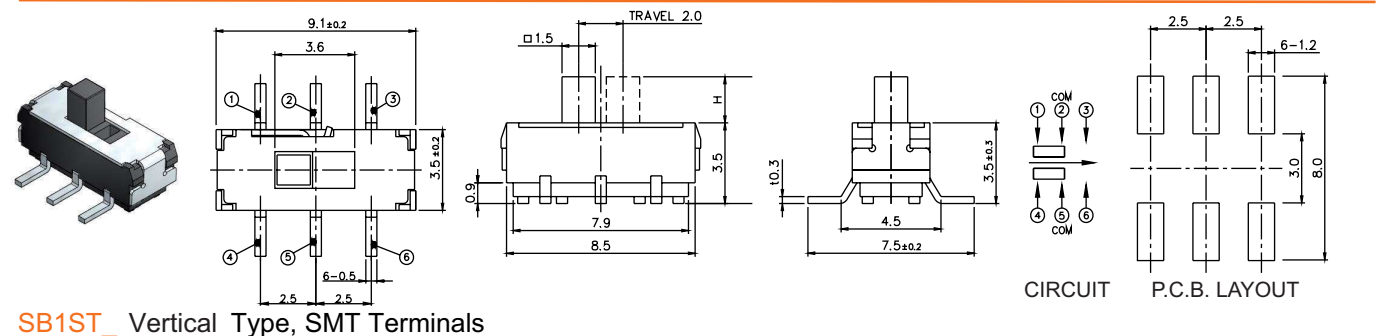
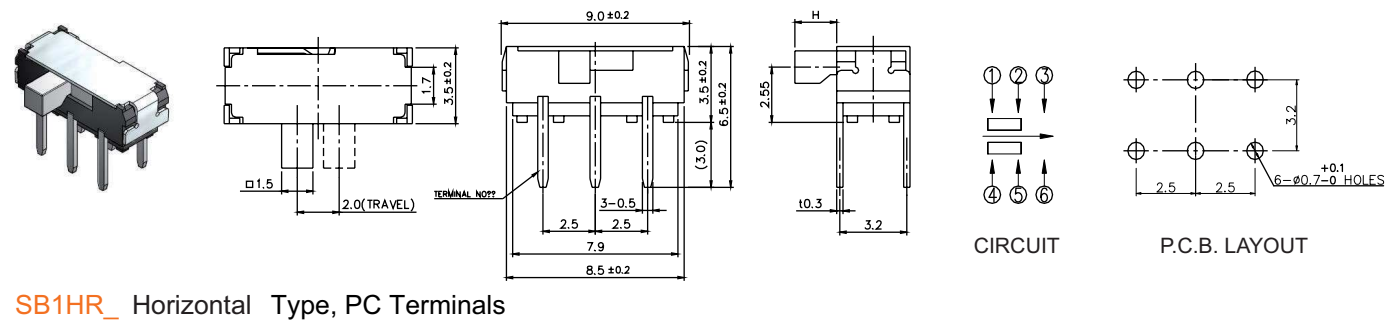
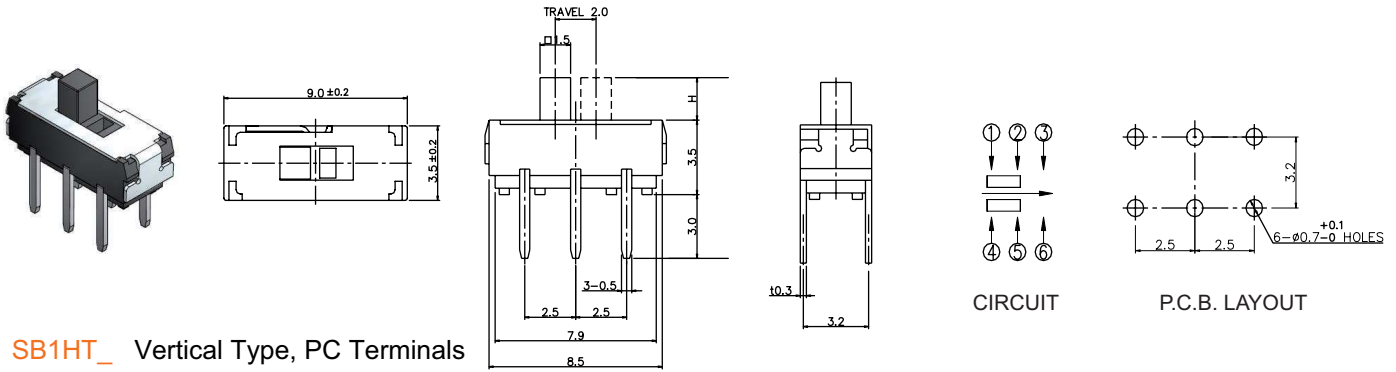


# Slide Switches

## 9 mm Slide Switches

## SB1 Series



### HOW TO ORDER:



#### 1 TYPE OF TERMINALS:

- H PC Terminals
- S Surface Mounting Type Terminals

#### 2 TYPE OF ACTUATING:

- T Vertical Type (Top Actuating)
- R Horizontal Type (Side Actuating)

#### 3 LENGTH OF ACTUATOR (Dimension "H"):

- 2 2.0 mm
- 4 4.0 mm

Unit: MM  
Tolerance unless otherwise stated: 0.1mm

### SPECIFICATIONS:

- > Rating: 0.3A 6VDC
- > Contact Resistance: 70 mohm Max.
- > Insulation Resistance: 100 Mohm Min. 500VDC
- > Dielectric Strength: 500VAC 1 Minute
- > Circuit: 2C-2P
- > Timing: Non-Shorting
- > Travel: 2± 0.1 mm
- > Operating Force: 200±100 gf
- > Operating Life: 10,000 Cycles
- > Operating Temp.: -40°C~+85°C
- > Soldering: 350±5°C 4 Sec. Max. (Manual)  
260°C 5 Sec. Max. (Reflow)
- > Packaging: Bulk (by PC Terminals Type)  
Reel (by SMT Terminals Type)