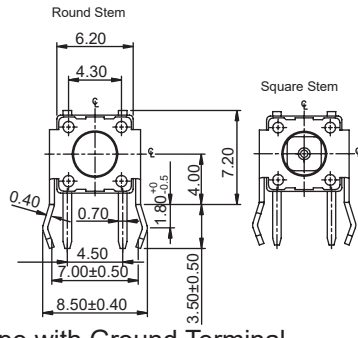


Tactile Switches

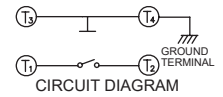
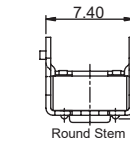
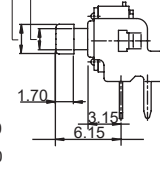
6x6mm THT Tactile Switches with Ground Terminals

TP2 Series

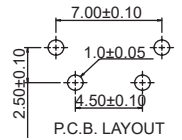


TP2R44: 2.4
TP2R48: 2.8

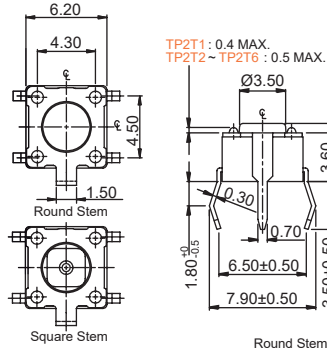
TP2R44: 1.6
TP2R48: 2.0



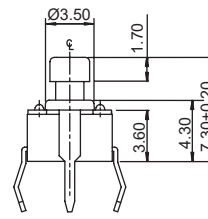
TP2R1: 0.3 MAX.
TP2R2-TP2R6: 0.4 MAX.



TP2R Right Angle Type with Ground Terminal

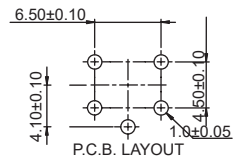
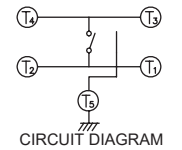


TP2T1: 0.4 MAX.
TP2T2 ~ TP2T6: 0.5 MAX.

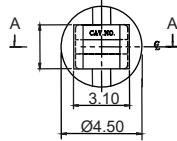
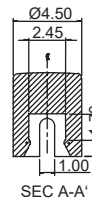


TP2T44: 2.4
TP2T48: 2.8

TP2T44: 1.6
TP2T48: 2.0

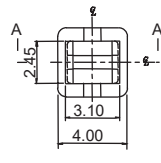
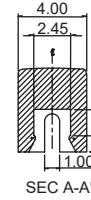
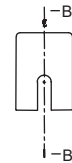


TP2T Top Type with Ground Terminal



SEC A-A'

SEC B-B'



SEC A-A'

SEC B-B'

K06R Round Caps

K06S Square Caps

How to order:

TP2 + (Caps)

1 TYPE OF TACTILE SWITCH:
R Right Angle Type with Ground Terminal
T Top Type with Ground Terminal

2 DIMENSION "H" FOR TP2R:
1 H=3.15mm (Round Stem)
2 H=3.85mm (Round Stem)
3 H=5.85mm (Round Stem)
44 H=6.15mm (Square Stem 2.4mm)
48 H=6.15mm (Square Stem 2.8mm)
5 H=8.35mm (Round Stem)
6 H=11.85mm (Round Stem)

3 DIMENSION "H" FOR TP2T:
1 H=4.3mm (Round Stem)
2 H=5.0mm (Round Stem)
3 H=7.0mm (Round Stem)
44 H=7.3mm (Square Stem 2.4mm)
48 H=7.3mm (Square Stem 2.8mm)
5 H=9.5mm (Round Stem)
6 H=13.0mm (Round Stem)

Individual stem heights available by request

4 MATERIAL OF DOME:
Blank Phosphor Bronze Dome
S Stainless Steel Dome

5 PACKAGE STYLE:
BK Bulk Pack

Optional:

6 CAP TYPE (Only for Square Stems):
K06S Square Caps
K06R Round Caps

7 COLOR OF CAPS:
A Black
B Ivory
C Red
E Yellow
F Green
G Blue
H Gray
S Salmon

3 STEM COLOR & OPERATING FORCE:
A Black & 100±50gf
K Brown & 160±50gf
C Red & 260±50gf
J Salmon & 320±80gf
E Yellow & 520±130gf

General Specifications:

MATERIALS

- » Contact Disc: Stainless steel
- » Terminal: Brass with silver plated

MECHANICAL

- » Stroke: 0.25 (+0.2/-0.1) mm
- » Operation Temperature: -40°C to +85°C

ELECTRICAL

- » Electrical Life (Phosphor Bronze Dome):
50,000 cycles for 320gf, 520gf
100,000 cycles for 260gf
200,000 cycles for 100gf, 160gf
- » Electrical Life (Stainless Steel Dome):
300,000 cycles for 320gf, 520gf
500,000 cycles for 260gf
1,000,000 cycles for 100gf, 160gf

- » Rating: 50mA, 12VDC
- » Contact Arrangement: 1 pole 1 throw

LEADFREE SOLDERING PROCESSES

- » Wave Soldering: Recommended solder temperature at 260°C max. 5 seconds subject to PCB 1.6mm thickness.

GeneralTolerance: ± 0.2 mm