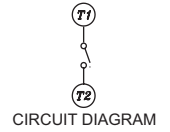
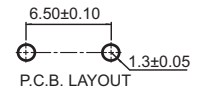
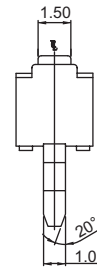
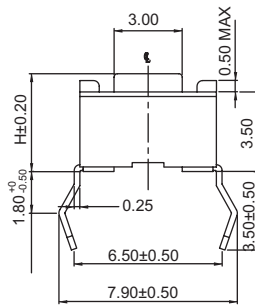
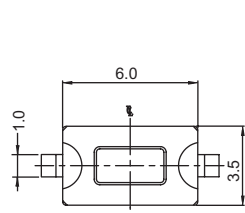


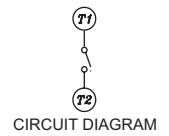
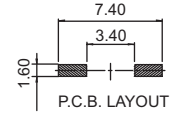
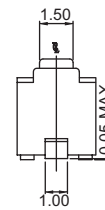
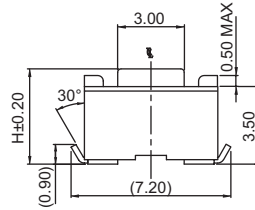
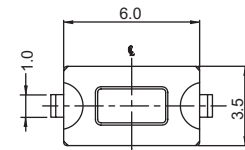
# Tactile Switches

## 6x3.5mm Tactile Switches

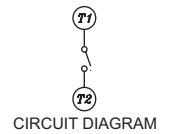
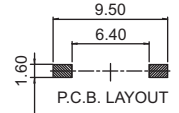
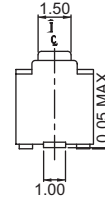
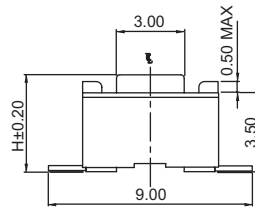
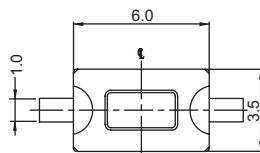
## TP6 Series



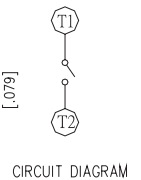
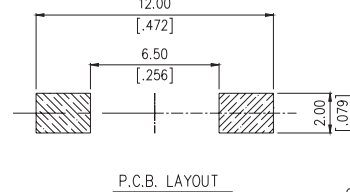
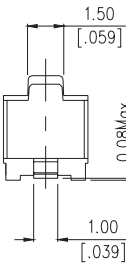
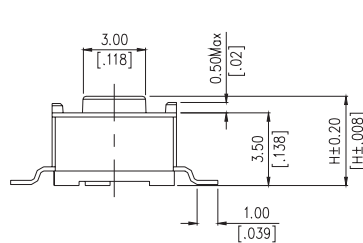
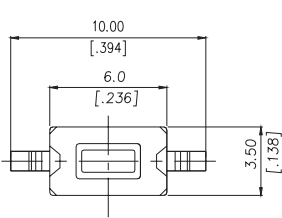
TP6H Thru Hole Type



TP6B Surface Mounting Bending Type



TP6S Surface Mounting Type



TP6G Surface Mounting Gull-wing Type

### How to order:

TP6

- |                             |  |
|-----------------------------|--|
| <b>1</b> TYPE OF TERMINALS: | <b>3</b> STEM COLOR / OPERATING FORCE: |
| H THT                       | K Brown / 160±50 gf                    |
| B SMT Bending               | C Red / 260±50 gf                      |
| S SMT Flat                  | B Salmon / 320±80 gf                   |
| G SMT Gull-wing             | E Yellow / 520±130 gf                  |
| <b>2</b> DIMENSION H:       | <b>4</b> PACKAGE:                      |
| 43 H = 4.3 mm               | BK Bag (TP6H Only)                     |
| 50 H = 5.0 mm               | TB Tube                                |
|                             | TR Tape & Reel                         |

### General Specifications:

#### FEATURES

- » Sharp click feel with a positive tactile feedback

#### MATERIALS

- » Contact Disc: Stainless steel with silver cladding
- » Terminal: Brass with silver plated

#### MECHANICAL

- » Stroke: 0.25 (+0.20/-0.10) mm
- » Operation Temperature: -25°C to +70°C
- » Storage Temperature: -30°C to +80°C

#### ELECTRICAL

- » Electrical Life: 50,000 cycles for 160gf & 320gf  
30,000 cycles for 260gf & 520gf

- » Rating: 50mA, 12VDC

- » Contact Arrangement: 1 pole 1 throw

#### LEADFREE SOLDERING PROCESSES

- » Wave Soldering: Recommended solder temperature at 260°C max. 5 seconds subject to PCB 1.6mm thickness (for THT).

- » Reflow Soldering: When applying reflow soldering, the peak temperature or the reflow oven should be set to 260°C max. 10 seconds max. (for SMT).

General Tolerance: ± 0.2 mm