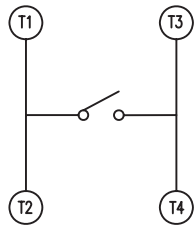
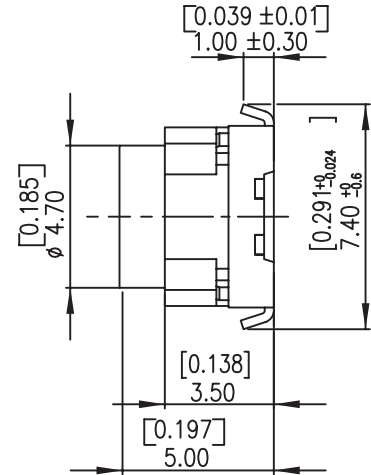
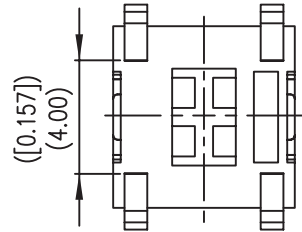
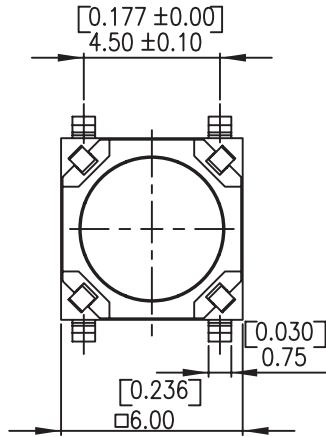
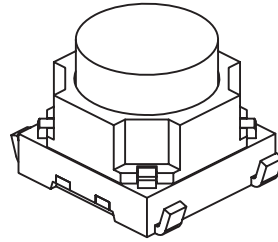
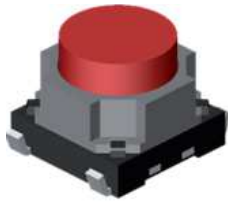


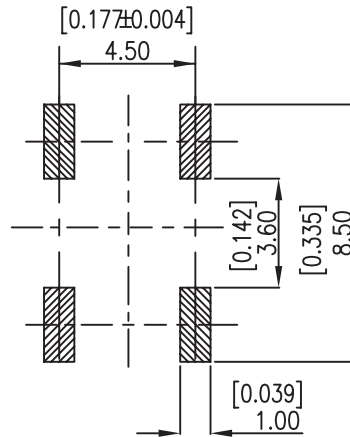
Tactile Switches

Long Travel SMT Tactile Switches

TP36 Series



CIRCUIT DIAGRAM



P.C.B. LAYOUT

How to order:



- 1 TERMINAL TYPE:**
B SMT Bending Terminals
- 2 TRAVEL:**
13 1.3 mm
- 3 OPERATING FORCE:**
C 200 gf
S 350 gf
- 4 PACKAGING:**
TR Tape and Reel

General Specifications:

MECHANICAL

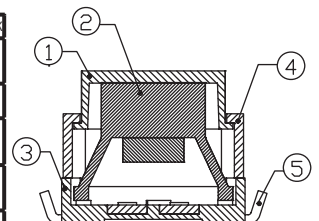
- > Stroke: 1.3±0.1/-0.3 mm
- > Operating Temperature Range: -40°C to +85 °C
- > Storage Temperature Range: -40°C to +85°C

ELECTRICAL

- > Rating: 50mA 12VDC
- > Contact Resistance: 100mΩ Max.
- > Insulation Resistance: 100M Ω Min. at 100 VDC
- > Dielectric Strength: 100VAC / 1 minute ±5s
- > Contact Arrangement: 1P1T
- > Electrical Life: 100,000 cycles (200gf)
30,000 cycles (350gf)

MATERIALS

ITEM	DESC	QTY	MATERIALS	TREATMENT	REMARK
1	Stem	1	HIGH-TEMP THERMOPLASTIC NYLON UL 94V-0	Color : Red	-
2	Silicone Dome	1	Silicone rubber with metal contact	With Gold Plating	-
3	Base	1	HIGH-TEMP THERMOPLASTIC NYLON UL 94V-0	Color : Black	-
4	Cover	1	HIGH-TEMP THERMOPLASTIC NYLON UL 94V-0	Color : Black	-
5	Terminal	1	BRASS	With Silver Plating	-



All specifications are restricted to QA test criteria.
DRW: D. L. JIN, CHK: D.F. LEE, APP: H.Z. QIU, DC: 2007-12-11, UPD: 2025-04-07.

> General Tolerance: +/-0.2mm
> Unit in mm and inch (bracketed)