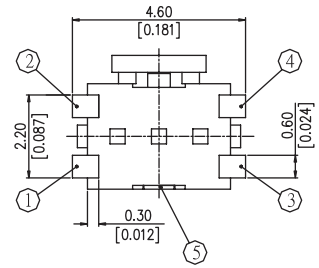
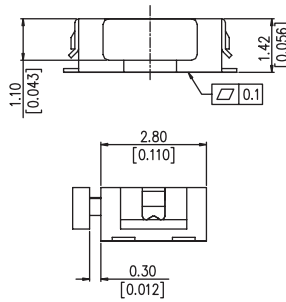
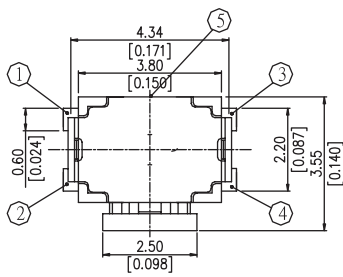


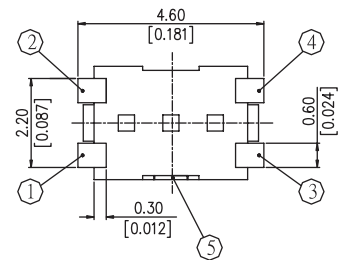
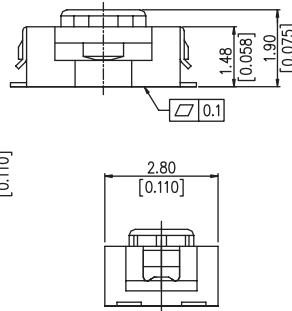
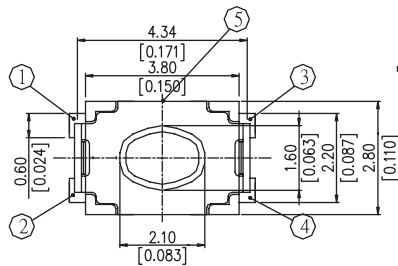
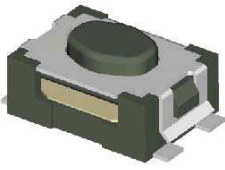
Tactile Switches

3.8x2.8mm Tactile Switches

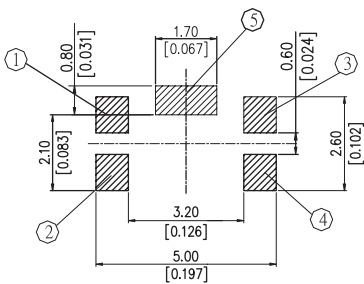
TP816 Series



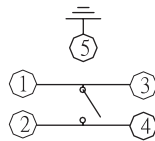
TP816S



TP816V



P.C.B LAYOUT



CIRCUIT

How to order:

TP816 1 2 3 4 5

- 1 ACTUATING TYPE & HEIGHT:**
 - S Side Push Actuating
 - V1 Vertical Push Actuating Height 1.9mm
 - V2 Vertical Push Actuating Height 2.5mm
- 2 OPERATING FORCE:**
 - L 160gf (Only for Side Push)
 - M 200gf (Only for Side Push)
 - H 300gf (Only for Vertical Push)
 - S 400gf (Only for Vertical Push)
- 3 COLOR OF ACTUATOR**
 - A Black
 - B White
- 4 CONTACT MATERIAL:**
 - S Silver
 - G Gold
- 5 PACKAGE:**
 - TR Tape & Reel

General Tolerance: +/-0.2mm

General Specifications:

MATERIALS

- » Cover: Stainless steel with silver plating
- » Spacing Cover: Stainless steel
- » Stem: High-temp thermoplastic UL94V-0
- » Tape: Teflon
- » Contact: Stainless steel with silver plating
- » Base: High-temp thermoplastic UL94V-0, Black
- » Terminal: Brass, with silver or gold plating

MECHANICALS

- » Operation Force: 160± 50gf (Vertical Push)
200±65gf Side Push
- » Stroke: 0.13±0.1mm (Vertical Push);
0.20±0.1mm (Side Push)
- » Operation Temperature: -30°C~80°C
- » Storage Temperature: -40°C~85°C

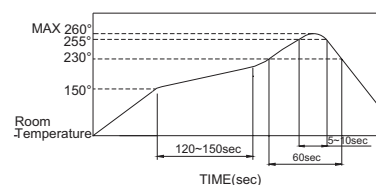
ELECTRICAL

- » Electrical Life: 50,000 cycles
- » Rating: 50mA, 12VDC
- » Contact Resistance: 100mΩ max.
- » Insulation Resistance: 100M Ω min. at 100VDC
- » Dielectric Strength: 100VAC/1 minute

SOLDERING PROCESS

- » Hand Soldering: Use a soldering iron of 30 watts, controlled at 350°C approximately while applying.
- » Reflow Soldering: When applying reflow soldering, the peak temperature or the reflow over should be set to 260°C max

Reflow Temperature Profile:



All specifications are restricted to QA test criteria.
DRW: D. L. JIN, CHK: D.F. LEE, APP: H.Z. QIU, DC: 2010-01-10. UPD: 2025-04-07.