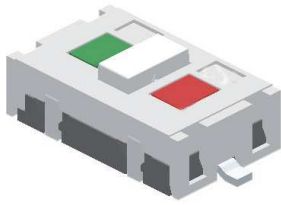


Tactile Switches

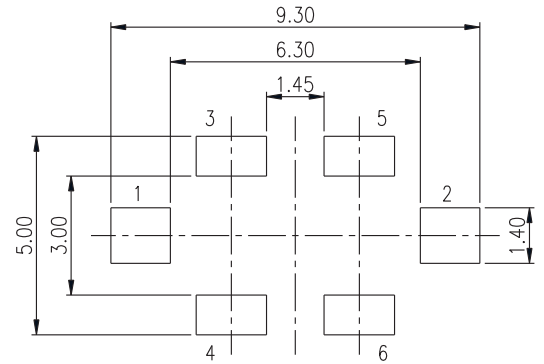
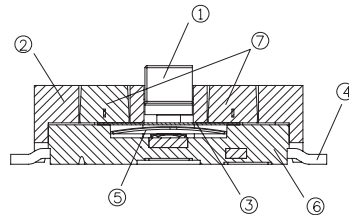
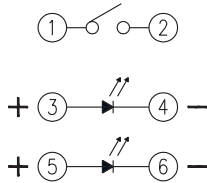
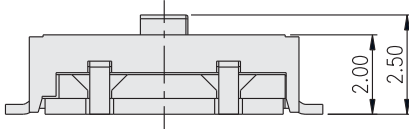
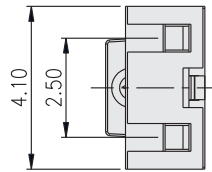
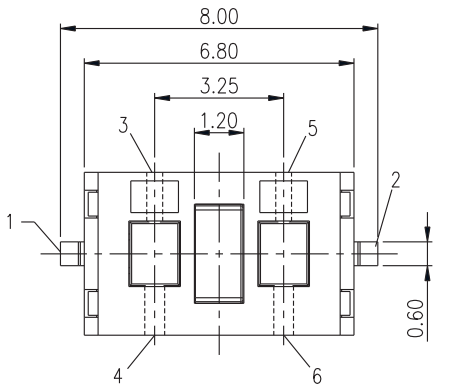
Bi-Color SMT Tactile Switches

TPJ Series



LED COLOR OPTION

Part No.	Color	Dominant Wavelength λ_p Typ.(nm)	Luminous Intensity I_v (mcd)	Forward Voltage V_f (V)		View Angle $2\cdot\theta_{1/2}$ (Degree)
				Typ.	Max.	
G	Blue	470	70	3.0	3.6	140°
F	Yellow Green	570	30	2.0	2.3	
E	Yellow	590	60	2.0	2.3	
D	Soft Orange	605	50	2.0	2.3	
C	Red	630	60	2.0	2.3	
B	Cold White	X:0.30 / Y:0.30	350	3.0	3.6	



P.C.B. LAYOUT

How to order:

TPJ

- | | |
|-----------------------------|------------------------------|
| 1 LEFT ILLUMINATION: | 3 RIGHT ILLUMINATION: |
| N Without LED | N Without LED |
| U Illuminated with LED | U Illuminated with LED |
| 2 LEFT LED COLORS: | 4 RIGHT LED COLOR: |
| N Without LED | N Without LED |
| G Blue | G Blue |
| F Yellow Green | F Yellow Green |
| E Yellow | E Yellow |
| D Orange | D Orange |
| C Red | C Red |
| B White | B White |

General Specifications:

FEATURES

- » Bi-color LED options
- » Sharp click feel with a positive tactile feedback

MECHANICAL

- » Stroke: 0.2mm
- » Operating Force: 160+80/-30gf
- » Operation Temperature: -20°C to +70°C
- » Storage Temperature: -30°C to +80°C

ELECTRICAL

- » Electrical Life: 50,000 cycles
- » Rating: 50mA, 12VDC
- » Contact Arrangement: 1 pole 1 throw

LEADFREE SOLDERING PROCESSES

- » Reflow Soldering: When applying reflow soldering, the peak temperature or the reflow oven should be set to 260°C max. 10 seconds max. (for SMT).

MATERIALS

ITEM	DESC.	Q'TY	MATERIALS	TREATMENT	REMARK
1.	STEM	1	HIGH TEMP THERMOPLASTIC NYLON UL 94V-0	COLOR: WHITE	-
2.	COVER	1	HIGH TEMP THERMOPLASTIC NYLON UL 94V-0	COLOR: WHITE	-
3.	ADHESIVE TAPE	1	KAPTON	NONE	-
4.	TERMINAL	1	BRASS	WITH SILVER 0.5 um min PLATING	-
5.	CONTACT	1	STAINLESS STEEL	WITH SILVER 0.5um min CLADDING	-
6.	BASE	1	HIGH TEMP THERMOPLASTIC NYLON UL 94V-0	MOLDED BLACK	-
7.	LED	2	-	NONE	-

General Tolerance: +/-0.2mm