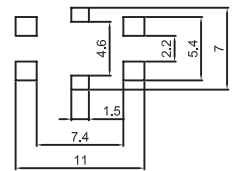
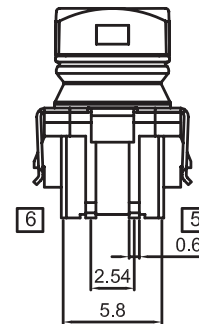
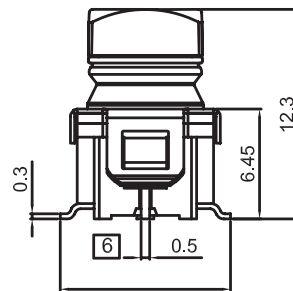
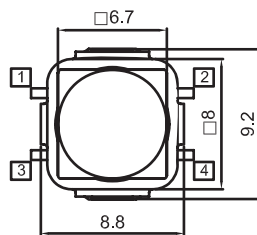
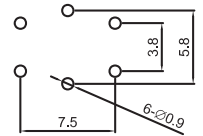
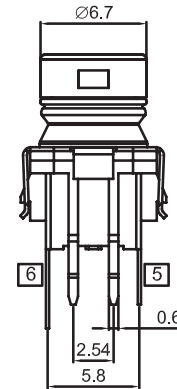
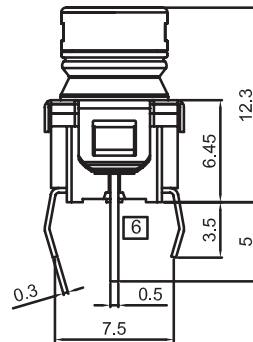
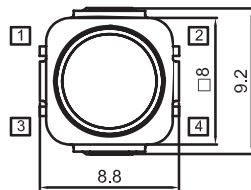


Tactile Switches

Watertight IP67 Bi-Color Tactile Switches

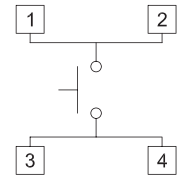
TPY Series



General Specifications:

SWITCH SPECIFICATIONS	
POLE - POSITION	Momentary action , SPST
CONTACT RATING	20 V DC , 1 mA
CONTACT RESISTANCE	1Ω MAX. 5 V DC ; 1 mA , by Method of Voltage DROP
INSULATION RESISTANCE	100 MΩ MIN. 100 V DC for 1 minute
DIELECTRIC STRENGTH	Breakdown is not Allowable ; 250 V AC for 1 Minute
OPERATING FORCE	125 ± 50 gf
OPERATING LIFE	500,000 cycles
OPERATING TEMPERATURE RANGE	-20°C ~ 70°C
TOTAL TRAVEL	1.3 ± 0.1 mm
SEALING	IP67

LED SPECIFICATIONS							
ATTENTION	LEDs are Electrostatic Sensitive devices	Unit	Value / LED Color				
			Blue	Green	Red	White	Yellow
FORWARD CURRENT	I_f	mA	10	20	20	2	20
REVERSE VOLTAGE	V_r	V	5.0	5.0	5.0	5.0	5.0
REVERSE CURRENT	I_r	μA	10	10	10	10	10
FORWARD VOLTAGE	V_f	V	@ 10mA 3.0-4.0	2.1-2.5	2.0-2.5	@ 2mA 2.8-4.0	2.0-2.5
LUMINOUS INTENSITY	I_v	mcd	@ 10mA 200	800	1800	@ 2mA 12	1800



SINGLE COLOR

TWO COLOR

CIRCUIT

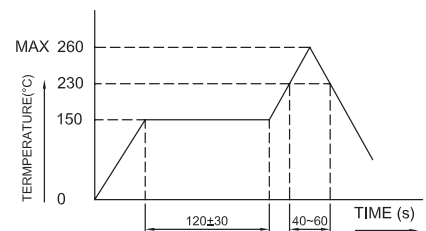
How to order:

TPY

1 OPERATION: N Non-Lock	6 DIFFUSER PLATE: B White (Standard) C Red F Green G Blue E Yellow	9 LED1 BRIGHTNESS: U Ultra (standard) N Without LED	11 LED2 BRIGHTNESS: U Ultra (standard) N Without LED
2 POLE: 1 Single Pole	7 CAP COLOR: J Transparent S Silver	10 LED1 COLOR: G Blue F Green B White E Yellow N Without LED	12 LED2 COLOR: G Blue F Green C Red B White E Yellow N Without LED
3 POSITION: 1 1 Position	8 CAP SYMBOL: N Without		
4 TERMINATION: T THT S SMT			
5 FRAME TYPE: S Square R Round			

General Tolerance: +/-0.2mm

Reflow Soldering:



Material:

CAP - PC
DIFFUSER PLATE - SILICON
ACTUATOR - PA
BASE FRAME - PA
COVER - SUS
TERMINAL - BRASS SILVER PLATING