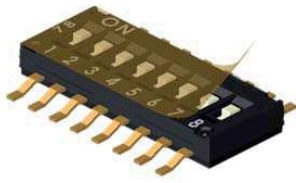


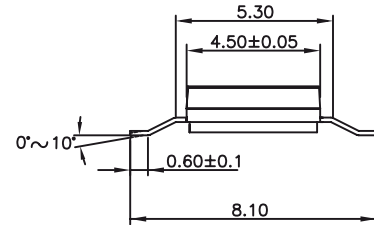
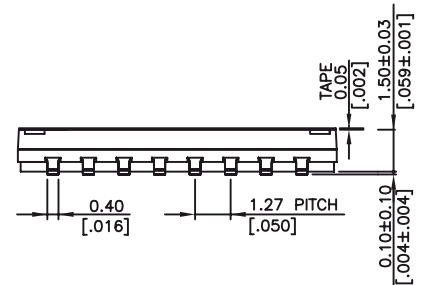
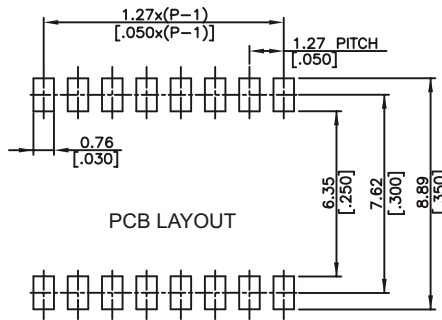
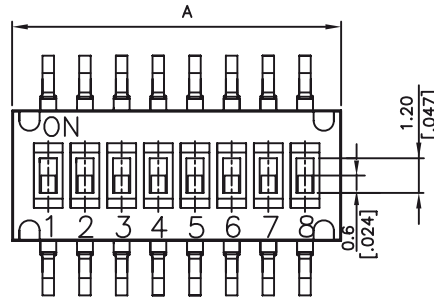
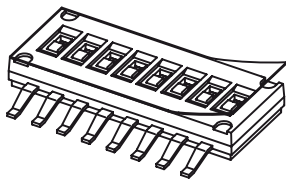
# DIP Switches

## SMT Half-Pitch Type DIP Switches

## DX48 Series



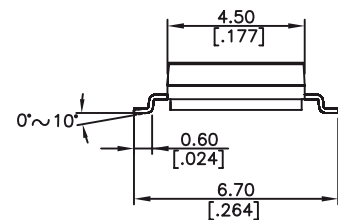
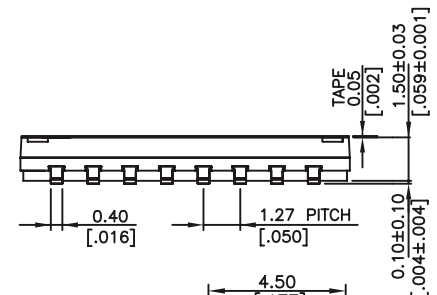
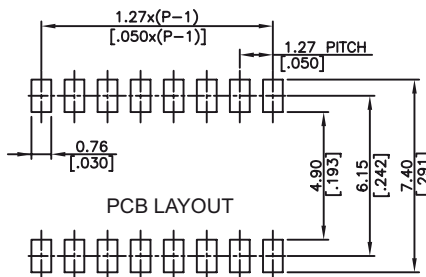
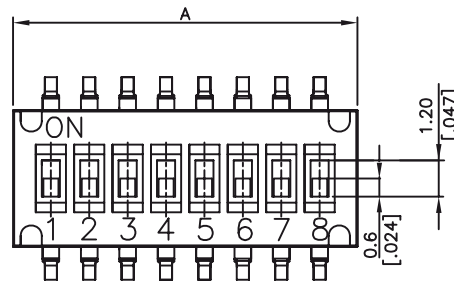
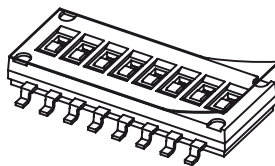
**DX48L**  
Terminal Length 8.1mm



02	2	3.77 [.148]
04	4	6.31 [.248]
06	6	8.85 [.348]
08	8	11.39 [.448]
10	10	13.93 [.548]
CODE OF 2	NO. OF POS	DIM A



**DX48S**  
Terminal Length 6.7mm



### How to order:

DX48

- |                            |                              |                         |
|----------------------------|------------------------------|-------------------------|
| <b>1</b> TERMINAL LENGTH:  | <b>3</b> ACTUATOR POSITION:  | <b>5</b> PACKAGE STYLE: |
| L 8.1 mm                   | F In OFF Position (Standard) | TB Tube                 |
| S 6.7 mm                   | O In ON Position             | TR Tape & Reel          |
| <b>2</b> NO. OF POSITIONS: | <b>4</b> SEAL:               |                         |
| 02 2 Positions             | N Regular (Standard)         |                         |
| 04 4 Positions             | T Top Tape Sealed            |                         |
| 06 6 Positions             |                              |                         |
| 08 8 Positions             |                              |                         |
| 10 10 Positions            |                              |                         |

Note:  
General Tolerance: +/-0.2mm;  
Unit in mm and inch (bracketed).

### General Specifications:

- > Rating: 100mA 50VDC (Non-Switching)  
25mA 24VDC (Switching)
- > Contact Resistance: 50 mohm Max. (initial)
- > Insulation Resistance: 100 Mohm Min. at 500VDC 1 Minute
- > Dielectric Strength: 500VAC (50/60Hz) for 1 Minute
- > Capacitance: 1 MHz± 10kHz, 5 pF Max.
- > Operating Force: 500 gf Max.
- > Operating Life: 1,000 Cycles
- > Operating Temperature: -40°C ~ +85°C
- > Soldering Conditions:  
Manuel Soldering 350°C Max. 5 Seconds Max.  
Reflow Soldering: 260°C Max. 3 Seconds Max.

Item	Description	Materials	Treatment
1	Cover	High-Temp. Thermoplastic Nylon UL94V-0	Molded Black
2	Actuator	High-Temp. Thermoplastic LCP	Molded White
3	Contact	Phosphor Bronze	Gold Plated
4	Terminal	Brass	Gold Plated
5	Base	High-Temp. Thermoplastic Nylon UL94V-0	Molded Black
6	Tape	Katpon	

