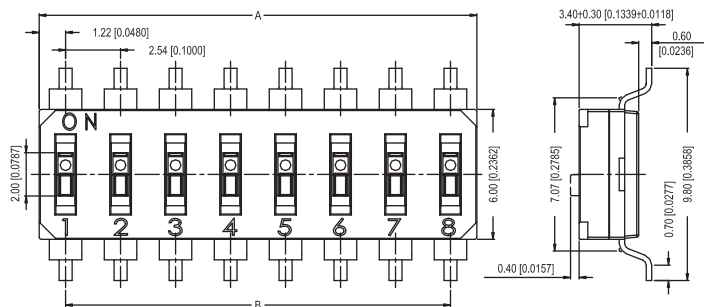


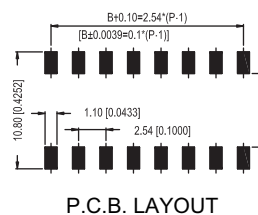
DIP Switches

End Stackable DIP Switch

DX5 Series

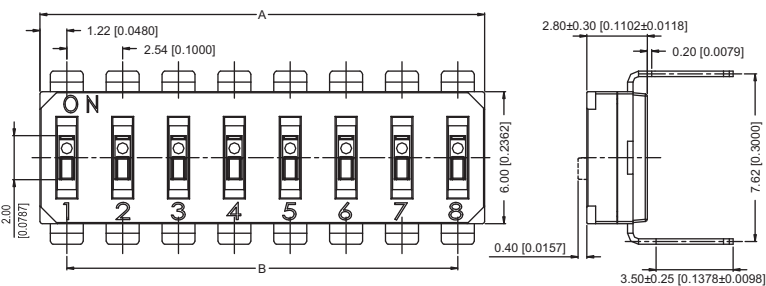


DX5S SMT Terminals

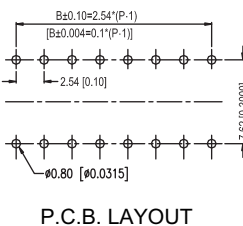


P.C.B. LAYOUT

No. of Position	Dimension A	Dimension B
1	2.44 [.096]	-
2	4.98 [.196]	2.54 [.100]
3	7.52 [.296]	5.08 [.200]
4	10.06 [.396]	7.62 [.300]
5	12.60 [.496]	10.16 [.400]
6	15.14 [.596]	12.70 [.500]
7	17.68 [.696]	15.24 [.600]
8	20.22 [.796]	17.78 [.700]
9	22.76 [.896]	20.32 [.800]
10	25.30 [.996]	22.86 [.900]
12	30.38 [1.196]	27.94 [1.100]

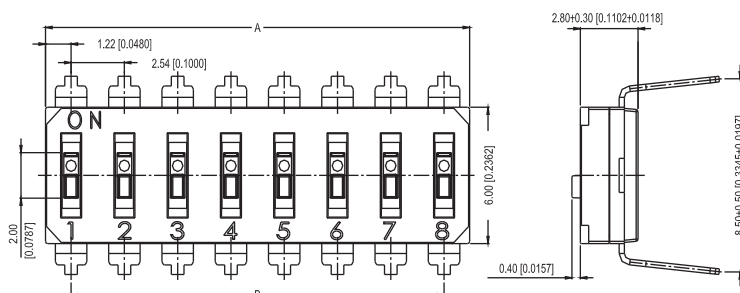


DX5T7 THT Terminals Type 7.62mm

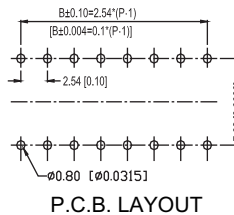


P.C.B. LAYOUT

No. of Position	Dimension A	Dimension B
1	2.44 [.096]	-
2	4.98 [.196]	2.54 [.100]
3	7.52 [.296]	5.08 [.200]
4	10.06 [.396]	7.62 [.300]
5	12.60 [.496]	10.16 [.400]
6	15.14 [.596]	12.70 [.500]
7	17.68 [.696]	15.24 [.600]
8	20.22 [.796]	17.78 [.700]
9	22.76 [.896]	20.32 [.800]
10	25.30 [.996]	22.86 [.900]
12	30.38 [1.196]	27.94 [1.100]

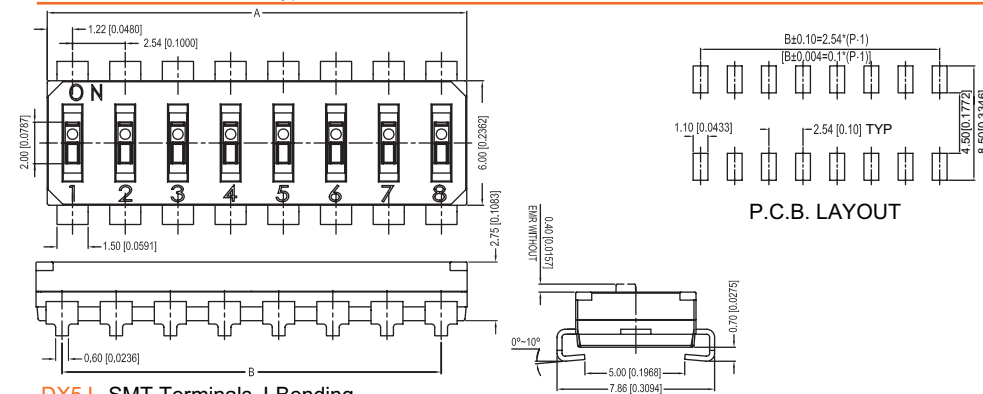


DX5T8 THT Terminals Type 8.50mm

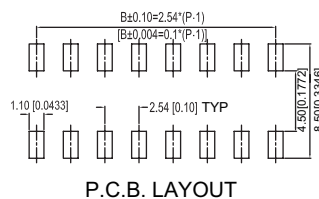


P.C.B. LAYOUT

No. of Position	Dimension A	Dimension B
1	2.44 [.096]	-
2	4.98 [.196]	2.54 [.100]
3	7.52 [.296]	5.08 [.200]
4	10.06 [.396]	7.62 [.300]
5	12.60 [.496]	10.16 [.400]
6	15.14 [.596]	12.70 [.500]
7	17.68 [.696]	15.24 [.600]
8	20.22 [.796]	17.78 [.700]
9	22.76 [.896]	20.32 [.800]
10	25.30 [.996]	22.86 [.900]
12	30.38 [1.196]	27.94 [1.100]



DX5J SMT Terminals J-Bending



P.C.B. LAYOUT

No. of Position	Dimension A	Dimension B
1	Not available	Not available
2	4.98 [.196]	2.54 [.100]
3	7.52 [.296]	5.08 [.200]
4	10.06 [.396]	7.62 [.300]
5	12.60 [.496]	10.16 [.400]
6	15.14 [.596]	12.70 [.500]
7	17.68 [.696]	15.24 [.600]
8	20.22 [.796]	17.78 [.700]
9	22.76 [.896]	20.32 [.800]
10	25.30 [.996]	22.86 [.900]
12	30.38 [1.196]	27.94 [1.100]

How to order:



- | | |
|---|--|
| 1 TYPE OF TERMINALS: | 4 SEAL TAPE: |
| S SMT Gullwing Type | N Without Seal Tape |
| T7 THT 7.62mm Type | T With Top Tape Sealed
(Only for Recessed Actuators and 4-12 Positions) |
| T8 THT 8.50mm Type | 5 SOLDERING: |
| J SMT J-Bending Type (not for 1 Position) | No Code RoHS |
| 2 TYPE OF ACTUATORS: | H RoHS & Halogen-Free |
| RA Raised Actuators | 6 PACKAGING: |
| RC Recessed Actuators | TB Tube |
| 3 NO. OF POSITIONS: | TR Tape & Reel |
| 01 1 Position (not for SMT J-Bending Terminals) | |
| 02 2 Positions | |
| 03 3 Positions | |
| 04 4 Positions | |
| 05 5 Positions | |
| 06 6 Positions | |
| 07 7 Positions | |
| 08 8 Positions | |
| 09 9 Positions | |
| 10 10 Positions | |
| 12 12 Positions | |

SPECIFICATIONS:

- > Contact Arrangement: 1P1T
- > Rating: 25mA 24VDC
- > Contact Resistance: 100 mohm Min. at 500VDC
- > Insulation Resistance: 100 Mohm Max. at 500 VDC
- > Dielectric Strength: 500VAC 1 Minute
- > Operating Force: 1,000 gf Max.
- > Stroke: 1.0mm
- > Operating Life: 2,000 Cycles
- > Operating Temperature: -20°C ~ +85°C
- > Wave Soldering: 260°C 5 Seconds Max. (THT)
- > Reflow Soldering: 260°C 5-10 Seconds Max. (SMT)

MATERIALS:

- > Base: High-Temp Thermoplastic UL94V-0 black
- > Cover: High-Temp Thermoplastic UL94V-0 black
- > Actuators: High-Temp Thermoplastic UL94V-0 white
- > Contact: Copper Alloy with Gold plated
- > Terminals: Brass with Gold plated
- > Tape: Kapton

Unit: mm & [inch]
General Tolerance: ±0.2mm [.008]

All specifications are restricted to QA test criteria.
DRW: J.Y. GONG CHK: Y.F. YAN APP: Z.W. LI DC: 2011-01-25 UPD: 2025-04-10.