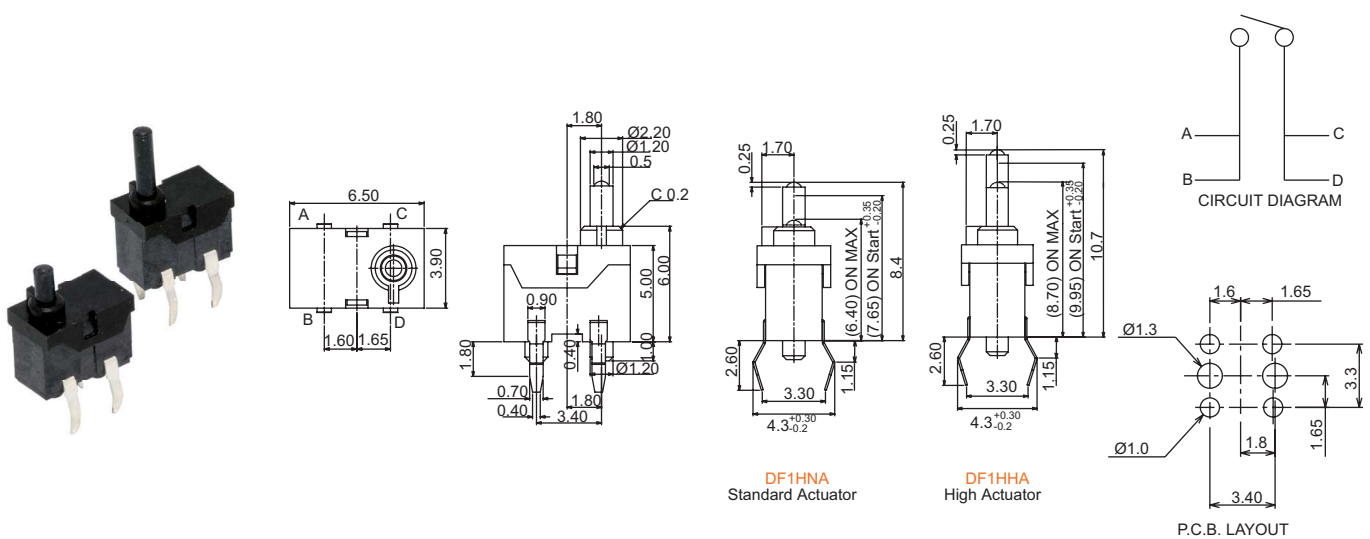


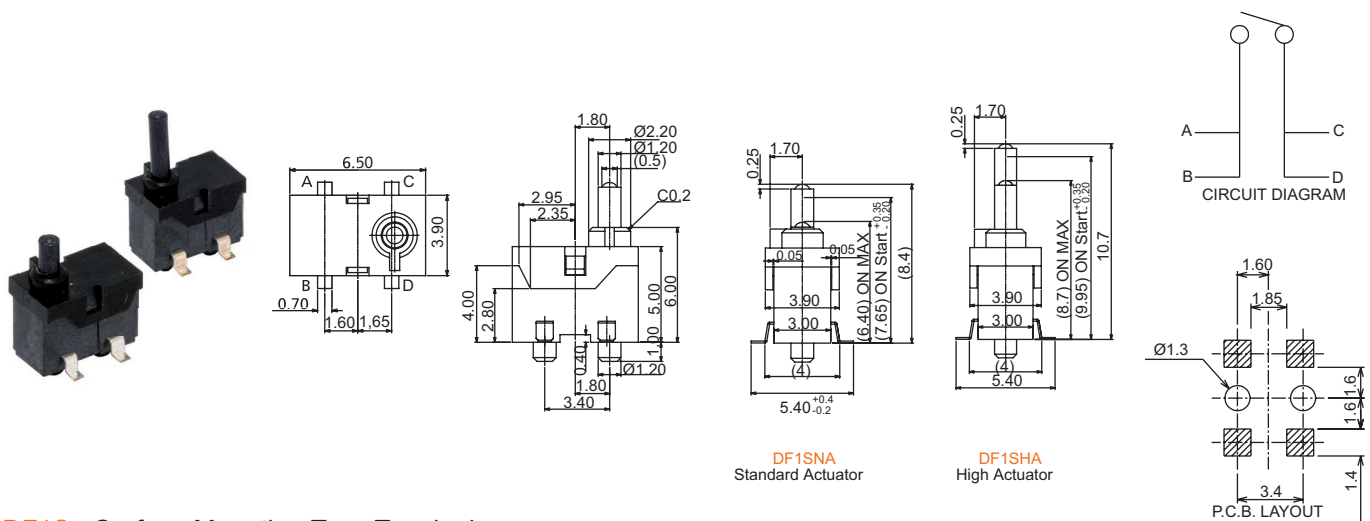
Detector Switches

Vertical Type Detector Switches

DF1 Series



DF1H Thru Hole Type Terminals



DF1S Surface Mounting Type Terminals

How to order:

DF1

1 TYPE OF TERMINALS:

- H Thru Hole Type
- S Surface Mounting Type

2 ACTUATOR TYPE:

- NA Standard Actuator
- HA High Actuator

3 PACKAGE STYLE:

- TB Tube
- TR Tape & Reel (DF1S Only)

General Specifications:

FEATURES

- » Compact detector switch with smooth switching action

MATERIALS

- » Contact: Stainless steel with silver cladding
- » Terminal: Phosphor bronze with silver plated

MECHANICAL

- » Operation Force: 30 gf max.
- » Stroke: 2 mm
- » Operation Temperature: -20°C to +70°C
- » Storage Temperature: -30°C to +80°C

ELECTRICAL

- » Electrical Life: 50,000 cycles
- » Rating: 5mA, 5VDC
- » Contact Arrangement: 1 pole 1 throw

LEADFREE SOLDERING PROCESSES

- » Wave Soldering: Recommended solder temperature at 260°C max.
- » Reflow Soldering: When applying reflow soldering, the peak temperature or the reflow oven should be set to 260°C 10 seconds max.

General Tolerance: ± 0.2 mm