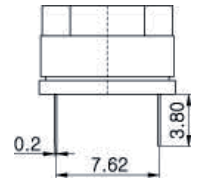
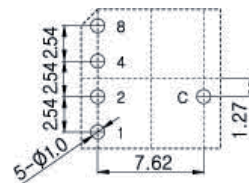
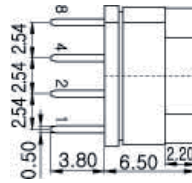
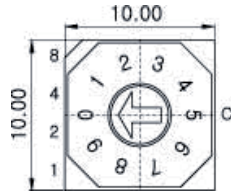


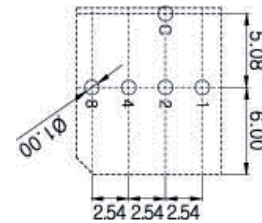
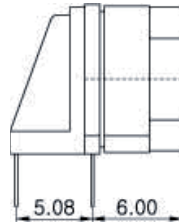
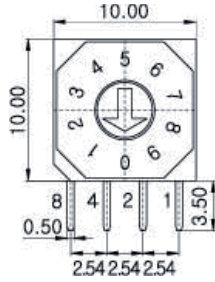
Rotary Switches

10 x 10 mm Sealed Rotary DIP Switches

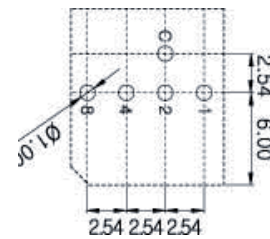
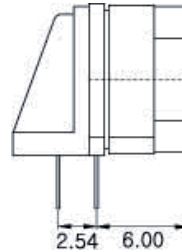
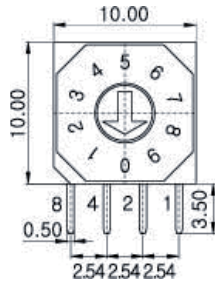
RD83 Series



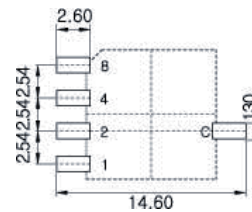
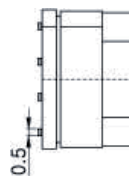
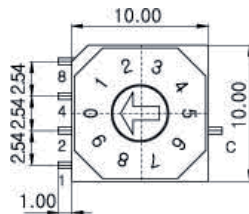
RD83(T)H THT Top Adjust Type Terminals



RD83(T)A1 THT Angel Type Terminals



RD83(T)A2 THT Angel Type Terminals



RD83(T)S SMT Top Type Terminals

How to order:

RD83

1 SOLDERING CONDITIONS:

- blank Iron & Wave Soldering
- T Reflow Soldering 10s/260°C by SMT & THR Terminals

2 TYPE OF TERMINALS:

- H THT Top Adjust Type
- A1 THT Angel Type (5.08)
- A2 THT Angel Type (2.54)
- S SMT Top Type

3 ROTOR TYPE (See Above Drawings):

- S1 Arrow Type
- S2 Shaft Type
- S3 Cross Type
- S4 Raised Type

4 NO. OF POSITIONS:

- 04 04 Positions
- 06 06 Positions
- 08 08 Positions
- 10 10 Positions
- 16 16 Positions

5 CODE:

- R Real Code
- S Complementary Code

6 PACKAGING TYPE:

- TB Tube
- TR Tape & Reel (RD83S Only)

General Specifications:

FEATURES

- » Sealing: IP 67(Dust & Waterproof). Except Cross Type of Actuator S3

MECHANICAL

- » Life Cycle: 10,000 steps
- » Operating Force: 700 gf max.
- » Operating /Storage Temp. for THT Type: -40°C to +85°C
- » Operating / Storage Temp. for THR Type: -60°C to +125°C

ELECTRICAL

- » Contact Rating: 150mA, 24V (Switching) 400mA, 24V (None-Switching)
- » Contact Resistance: 80mΩ Max
- » Insulation Resistance: 100MΩ Min

SOLDERING CONDITIONS

- » THT Type: Solder iron max: 2s./340°C Solder bath max: 5s/280°C
- » THR Type: Reflow Soldering: 10s./260°C Solder iron max: 2s./340°C Wave Soldering: 5s/280°C
- » SMT Type: Reflow Soldering: 10s./260°C Solder iron max: 2s./340°C Solder bath max: 5s/280°C

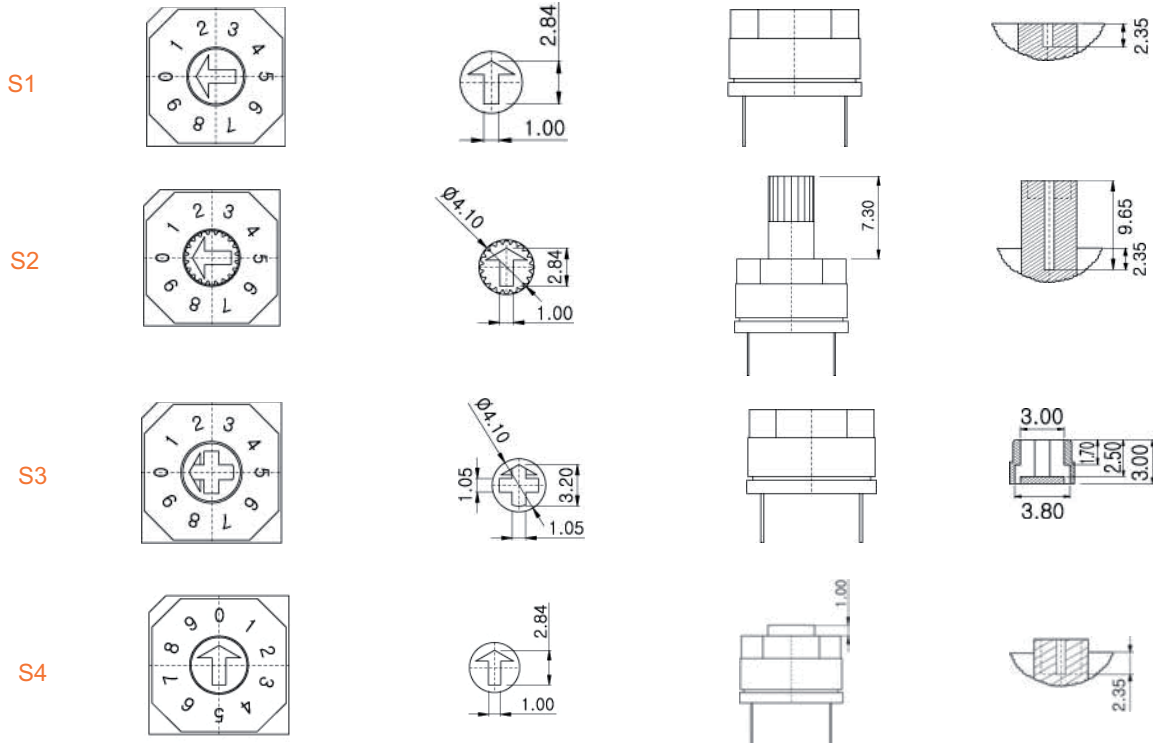
All specifications are restricted to QA test criteria. DC: 2009-02-05. UPD: 2011-07-14 / 2017-06-07 / 2025-05-13. DRW: D. L. JIN, CHK: D.F. LEE, APP: H.Z. QIU

Rotary Switches

10 x 10 mm Sealed Rotary DIP Switches

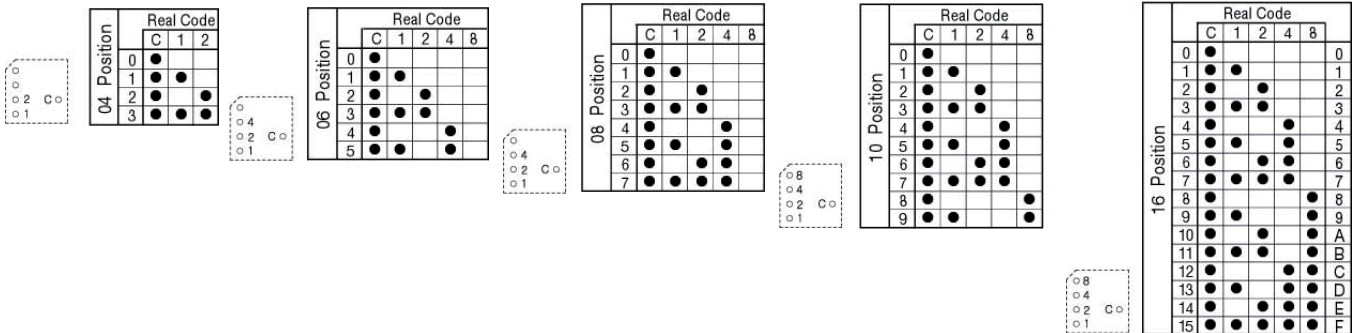
RD83 Series

ROTOR TYPE

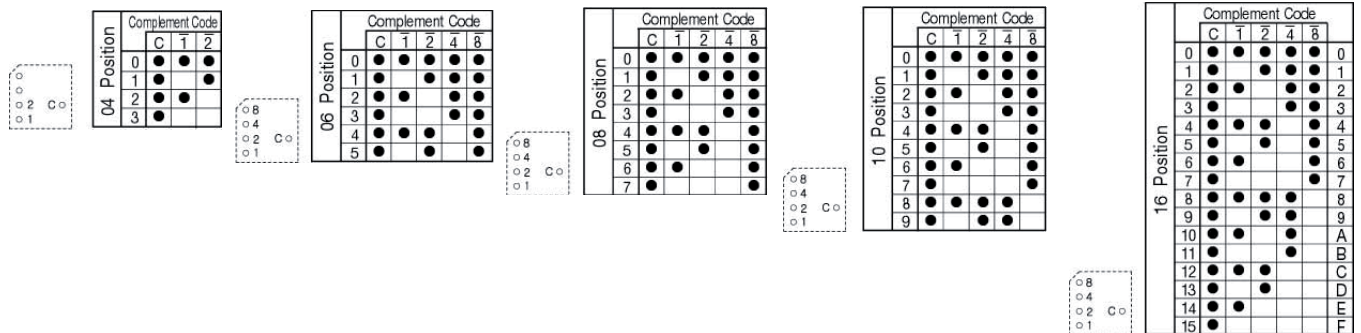


CODE

Real Code



Complement Code



ACCESSORIES

