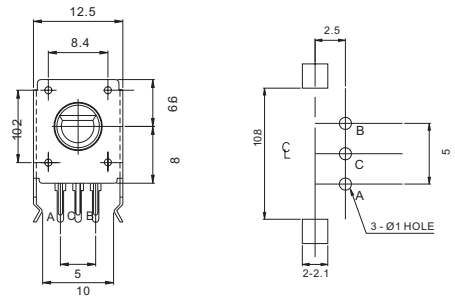
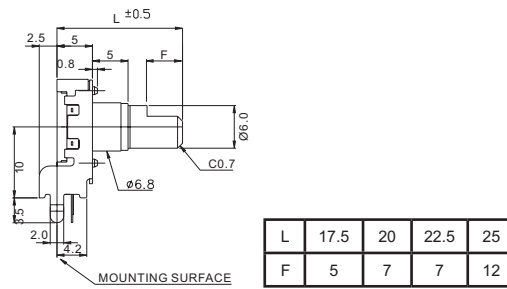
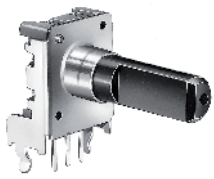


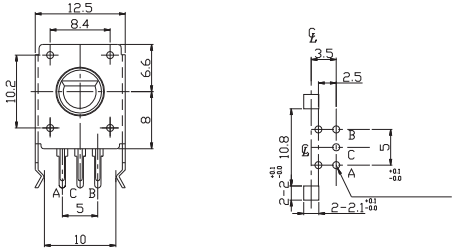
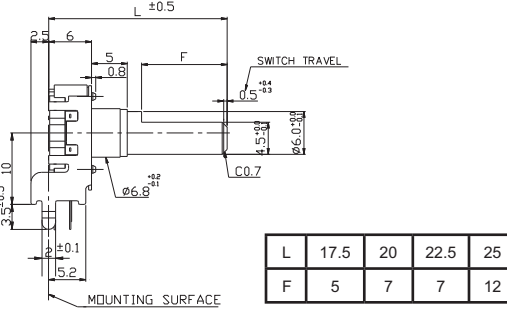
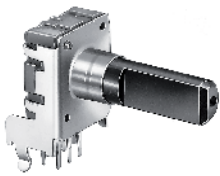
# Encoders

## 12mm Insulated Shaft Rotary Encoders

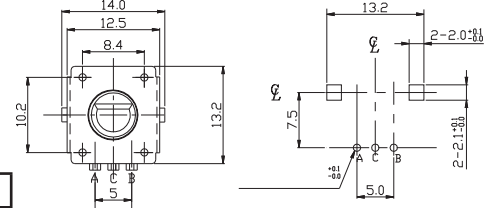
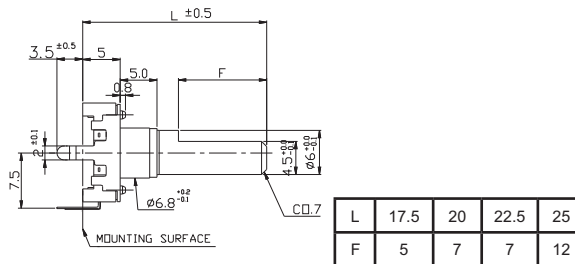
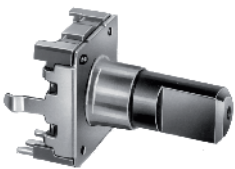
## EC2 Series



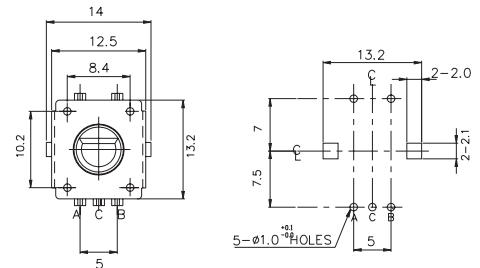
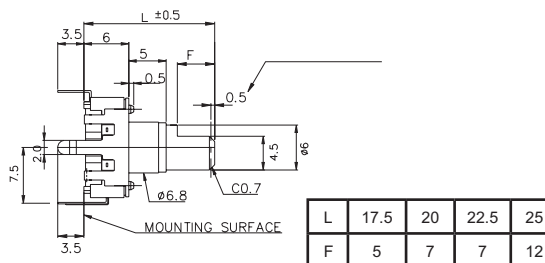
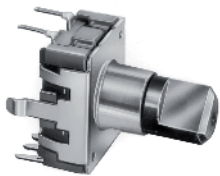
EC200\_ \_ \_ \_ F24P



EC201\_ \_ \_ \_ F24P



EC2040\_ \_ \_ \_ F24P



EC2041\_ \_ \_ \_ F24P

### How to order:

EC2

- 1 MATERIAL MARKS OF SHAFT:**
  - 0 Plastics (Injection Molding)
  - 1 Aluminium (Lathed)
- 2 TYPE OF TERMINAL:**
  - 2 PC Board (horizontal)
  - 4 PC Board (vertical)
- 3 SWITCH:**
  - 0 Without Switch
  - 1 With Switch
- 4 TYPE OF BUSHING:**
  - E M9x0.75
  - B M7x0.75
  - D 3/8-32NEF
- 5 LENGTH OF BUSHING:**
  - 5 5 mm
  - 7 7 mm

- 6 THREAD:**
  - N Without Thread
  - T With Thread
- 7 LENGTH OF SHIFT ("L" in mm):**
  - 17.5
  - 20
  - 22.5
  - 25
- 8 SHIFT SHAPE:**
  - K Knurled Type
  - F Flat Type
  - A Flat Type with Slot
- 9 MAXIMUM RESOLUTION:**
  - 24P Pulses with Detent: 24

### General Specifications:

#### MECHANICAL:

- » Click Torque: 30-200 gf.cm
- » Shaft Push-Pull Strength: 5 Kgf
- » Rotational Life: 15,000 cycles

#### ELECTRICAL:

- » Rating: 5V DC @ 0.5 mA
- » Maximum Operating Current: 0.5 mA
- » Insulation Resistance: 50V DC, 10MΩ Min.
- » Voltage Proof: 50 VAC

#### WITH PUSH-ON SWITCH SPECIFICATIONS:

- » Switch Circuit: SPST (Push-On)
- » Travel of Switch: 0.5 +0.4/-0.3 mm
- » Operating Force of Switch: 600±300 gf
- » Rating: DC16V 3A (DC16V 10mA Min.)
- » Operating Life: 25,000 cycles