

# Indicators

## Anti-Vandal Metal Indicator - Mounting Hole Ø8mm

DAV08 Series



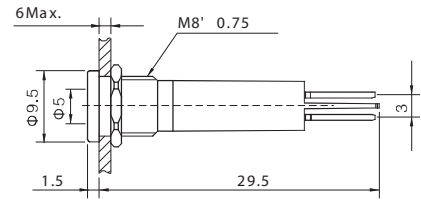
Nickel- plated brass



Black- plated brass



Stainless steel



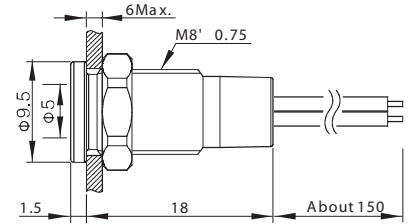
Nickel- plated brass



Black- plated brass



Stainless steel



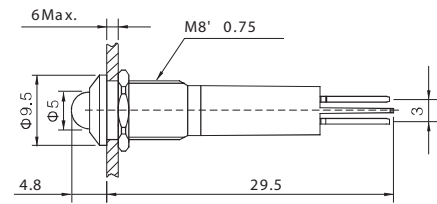
Nickel- plated brass



Black- plated brass



Stainless steel



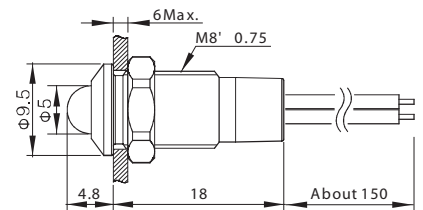
Nickel- plated brass



Black- plated brass



Stainless steel



### How to order:

DAV08

1	2	3	4	5	6
<input type="text"/>	<input type="text"/>	<input type="text"/>	<input type="text"/>	<input type="text"/>	<input type="text"/>

#### 1 FRONT SHAPE:

- F Flat Round
- G Domed

#### 2 TERMINATION:

- S Solder Lug
- C Wire 15cm (24AWG)

#### 3 ILLUMINATION:

- 1 Dot Type Illumination

#### 4 LED COLOR:

- C Red
- D Orange
- A Black
- F Green
- G Blue

#### 5 LED VOLTAGE:

- 0 w/o Resistance
- 6 AC/DC 6V
- 12 AC/DC 12V
- 24 AC/DC 24V
- 110 AC/DC 110V
- 220 AC/DC 220V

\*5-24V inner resistance,  
110-220V extra resistance

#### 6 MATERIAL:

- blank Stainless Steel
- N Nickel-plated brass
- G Black-plated brass

#### Lamp Ratings

Lamp Type	LED lamp (AC/DC)
Lamp color	R G Y B W
Life	40000 hours (Reference)
Rated Voltage	AC/DC 6V, AC/DC 12V, AC/DC 110V, AC/DC 220V, AC/DC 24V, AC/DC 24V, AC/DC 24V
Rated Current	2-15mA
Dropping Way	Inner resistance
Lamp	Using AC/DC LED lamp, the terminals have no difference of anode and cathode. Using inner resistance, do not need connect outer resistance
Circuit Diagram	

Note: DC LED and other voltage can be made to order.

### General Specifications:

#### CHARACTERISTICS

- > Protection Degree: IP67
- > Anti Vandal Degree: IK10
- > Switch Rating: 2mA to 20mA
- > Life: about 40.000 hours (reference)
- > Insulation Resistance: 1000MΩ Min.
- > Dielectric Intensity: 1500VAC
- > Operating Temperature: -25°C to +55°C
- > Panel Thickness: 1 to 6 mm
- > Torque: about 0.2 Nm

#### MATERIAL

- > Lamp cover: Epoxy (Anti-UV made to order)
- > Body: SUS303/Nickel-plated brass /Black-plated brass
- > Base: PA