

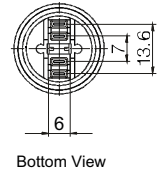
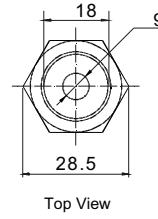
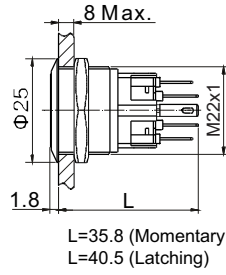
Pushbutton Switches

Anti-Vandal Pushbutton Switch - Mounting Hole Ø22mm

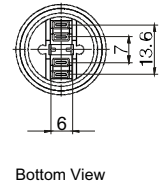
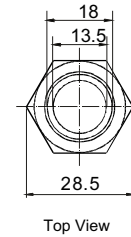
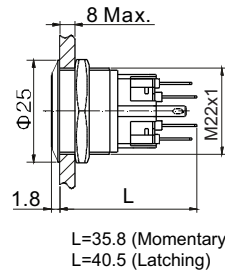
PAV22 Series



PAV22S...1... Dot illuminated; 1NO1NC



PAV22S...2... Ring illuminated; 1NO1NC



LAMP RATINGS

Lamp Type	LED Lamp AC/DC *			Lamp Circuit Diagram
	AC/DC6V	AC/DC12V	AC/DC110V	
Rated Voltage	AC/DC24V	AC/DC36V	AC/DC220V	<p>Using AC/DC LED lamp, the terminals have no difference of anode and cathode; Using inner resistance, don't need to connect outer resistance.</p>
Rated Amper	about 15mA		about 5mA	
LED Colors	red, green, yellow, orange, blue, white			
Life	40,000 hours (reference)			

* DC LED and other voltages can be made by request.

SWITCHING

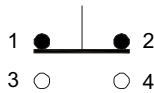
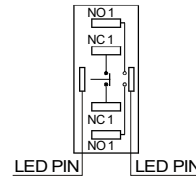


DIAGRAM OF TERMINATION



The second and third switch unit are the same.

How to order:

PAV22

1 CONTACT:

S 1NO1NC

2 OPERATING MODE:

M Momentary
L Latching

3 FRONT SHAPE:

blank Flat Round
PF Super Flat Head, Flat Button

4 TERMINATION:

S Solder Lug 2.8x0.5mm
W Screw (only with Flat Round Front)

5 ILLUMINATION:

0 No Illumination
1 Dot Type Illumination
2 Ring Type Illumination

6 LED COLOR:

N No Illumination
C Red F Green E Yellow
D Orange G Blue B White

7 LED VOLTAGE:

0 No Illumination
6 AC/DC 6V
12 AC/DC 12V
24 AC/DC 24V
110 AC/DC 110V
220 AC/DC 220V
(Other Voltage can be made by request)

8 ENGRAVING:

A Stop B Start C Return D Reset
E | F || G ◀ H ↑
J ■ K ⏻ L ⚡ M ⚙
N ○
(Other engraving can be made by request)

9 MATERIAL:

Blank SUS
A Aluminium Alloy (Black)

General Specifications:

CHARACTERISTICS

- > Protection Degree: IP65 (IP67 made to order)
- > Anti Vandal Degree: IK10
- > Switch Rating: 5A 250VAC Max.
- > Contact Resistance: 50mΩ Max.
- > Insulation Resistance: 1000MΩ Min.
- > Dielectric Intensity: 2000VAC
- > Operating Temperature: -20°C to +55°C
- > Mechanical Life: 1,000,000 cycles
- > Electrical Life: 50,000 cycles
- > Panel Thickness: 1 to 8 mm
- > Torque: 5 to 14 Nm
- > Operation Pressure: about 5.5 N
- > Operation Distance: about 2.5mm

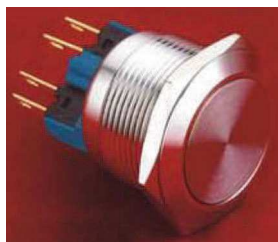
MATERIALS

- > Contact: Silver alloy
- > Button: SUS / ALU Alloy
- > Body: SUS / ALU Alloy
- > Base: PA

Pushbutton Switches

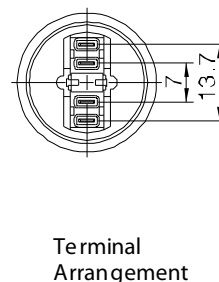
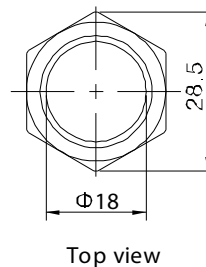
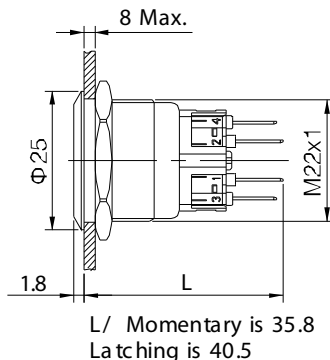
Anti-Vandal Pushbutton Switch - Mounting Hole $\text{\O}22\text{mm}$

PAV22 Series



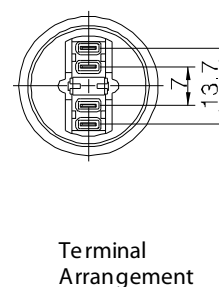
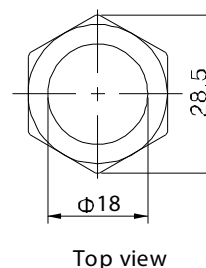
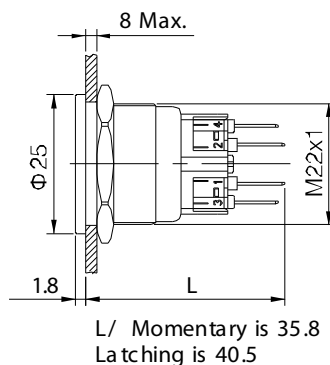
Terminal Type: Solder Lug
Front Shape: Flat Round
Illumination: No Illuminated

PAV22S_S0N0N



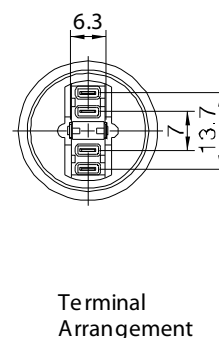
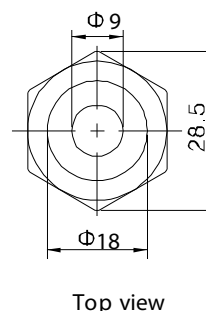
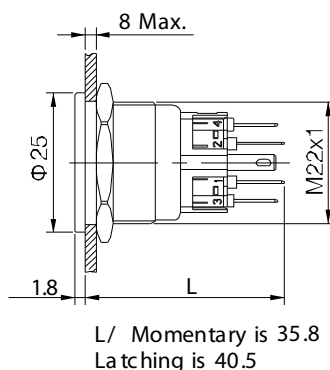
Terminal Type: Solder Lug
Front Shape: Super Flat
Illumination: No Illuminated

PAV22S_PFS0N0N



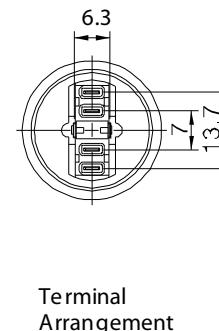
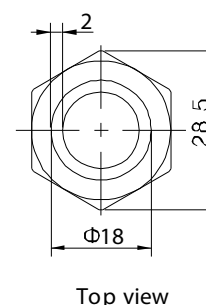
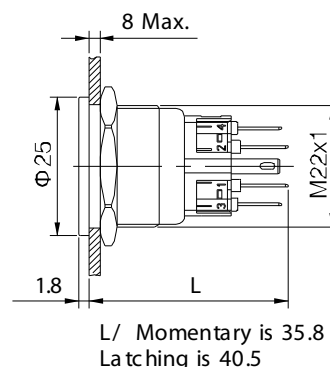
Terminal Type: Solder Lug
Front Shape: Super Flat
Illumination: Dot Illuminated

PAV22S_PFS1F_N



Terminal Type: Solder Lug
Front Shape: Super Flat
Illumination: Ring Illuminated

PAV22S_PFS2G_N



Terminal Type: Screw
Front Shape: Flat Round
Illumination: Ring Illuminated

PAV22S_W2G_N

