

Pushbutton Switches

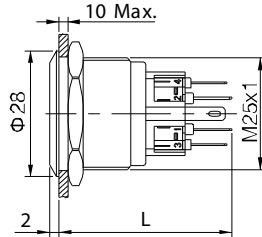
Anti-Vandal Pushbutton Switch - Mounting Hole Ø25mm

PAV25 Series

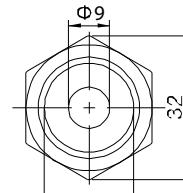


Terminal Type: Solder Lug
Front Shape: Flat Round
Illumination: Dot Illuminated

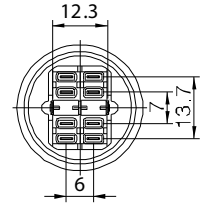
PAV25D__S1C_N



L/ Momentary is 38.4
Latching is 40.8



Top view

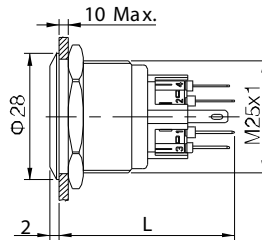


Terminal Arrangement

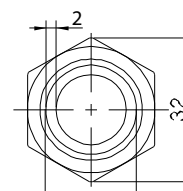


Terminal Type: Solder Lug
Front Shape: Flat Round
Illumination: Ring Illuminated

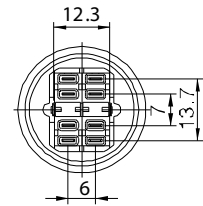
PAV25D__S2C_N



L/ Momentary is 38.4
Latching is 40.8



Top view



Terminal Arrangement

LAMP RATINGS

Lamp Type	LED Lamp AC/DC *			Lamp Circuit Diagram
	AC/DC6V	AC/DC12V	AC/DC110V	
Rated Voltage	AC/DC24V	AC/DC36V	AC/DC220V	<p>Using AC/DC LED lamp, the terminals have not difference of anode and cathode; Using inner resistance, don't need to connect outer resistance.</p>
Rated Amper	about 15mA		about 5mA	
LED Colors	red, green, yellow, orange, blue, white			
Life	40,000 hours (reference)			

* DC LED and other voltages can be made by request.

SWITCHING

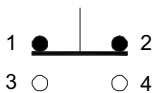
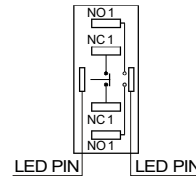


DIAGRAM OF TERMINATION



The second and third switch unit are the same.

How to order:

PAV25

1 CONTACT:

- S 1NO1NC
- D 2NO2NC

2 OPERATING MODE:

- M Momentary
- L Latching

3 FRONT SHAPE:

- blank Flat Round
- PF Super Flat Head, Flat Button

4 TERMINATION:

- S Solder Lug 2.8x0.5mm
- W Screw (only with Flat Round Front)

5 ILLUMINATION:

- 0 No Illumination
- 1 Dot Type Illumination
- 2 Ring Type Illumination

6 LED COLOR:

- N No Illumination
- C Red
- D Orange
- F Green
- G Blue
- E Yellow
- B White

7 LED VOLTAGE:

- 0 No Illumination
 - 6 AC/DC 6V
 - 12 AC/DC 12V
 - 24 AC/DC 24V
 - 110 AC/DC 110V
 - 220 AC/DC 220V
- (Other Voltage can be made by request)

8 ENGRAVING:

- A Stop
 - B Start
 - C Return
 - D Reset
 - E |
 - F ||
 - G ◀
 - H ↑
 - J ■
 - K ⏻
 - L ⚡
 - M ⚙
 - N ○
- (Other engraving can be made by request)

General Specifications:

CHARACTERISTICS

- > Protection Degree: IP65 (for surface of the panel)
IP67 made to order
- > Anti Vandal Degree: IK10
- > Switch Rating: 5A 250VAC Max.
- > Contact Resistance: 50mΩ Max.
- > Insulation Resistance: 1000MΩ Min.
- > Dielectric Intensity: 2000VAC
- > Operating Temperature: -20°C to +55°C
- > Mechanical Life: 1,000,000 cycles
- > Electrical Life: 50,000 cycles
- > Panel Thickness: 1 to 10 mm
- > Torque: 5 to 14 Nm
- > Operation Pressure: 5.5 to 7 N
- > Operation Distance: about 2.8mm

MATERIAL

- > Contact: Silver alloy
- > Button: Stainless steel
- > Body: Stainless steel
- > Base: PA

Pushbutton Switches

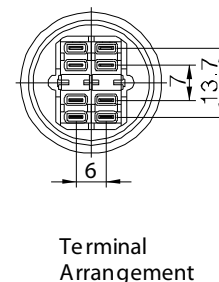
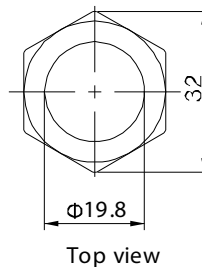
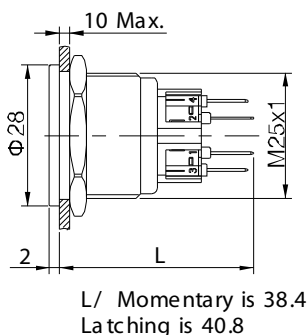
Anti-Vandal Pushbutton Switch - Mounting Hole $\text{\O}25\text{mm}$

PAV25 Series



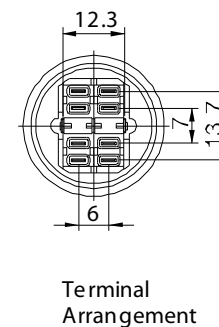
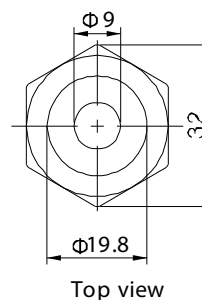
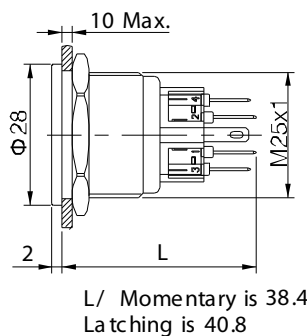
Terminal Type: Solder Lug
Front Shape: Super Flat
Illumination: No Illuminated

PAV25S_PFS0N0N



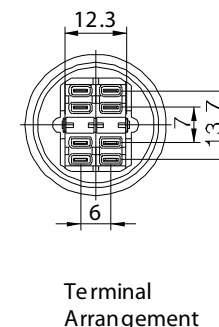
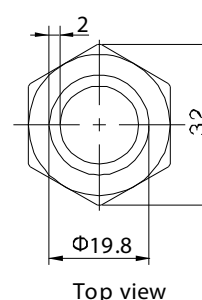
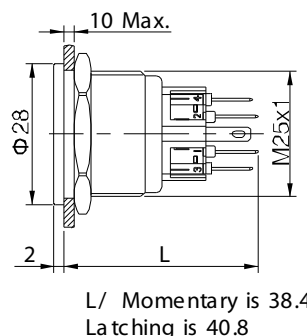
Terminal Type: Solder Lug
Front Shape: Super Flat
Illumination: Dot Illuminated

PAV25S_PFS1F_N



Terminal Type: Solder Lug
Front Shape: Super Flat
Illumination: Ring Illuminated

PAV25S_PFS2F_N



Terminal Type: Screw
Front Shape: Flat Round
Illumination: Dot Illuminated

PAV25S_W1G_N

