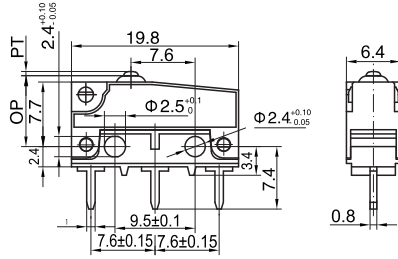


Micro Switches

Micro Switches Waterproof

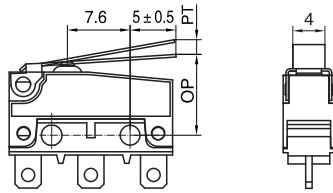
MPF Series

MPF_Z0P100
MPF_Z0P160



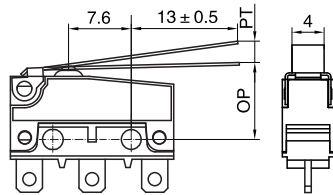
型號 Model	MPF_Z0P100	MPF_Z0P160
OF Max(N)	1.00	1.60
RF Min(N)	0.20	0.30
PT Max(mm)	0.6	
OT Min(mm)	0.4	
MD Max(mm)	0.1	
OP(mm)	8.4 ± 0.3	

MPF_Z1F100
MPF_Z1F160



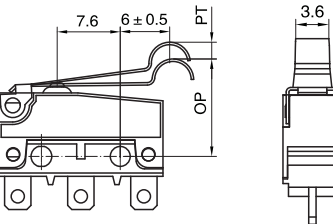
型號 Model	MPF_Z1F100	MPF_Z1F160
OF Max(N)	0.50	0.60
RF Min(N)	0.05	0.05
OT Min(mm)	0.8	
MD Max(mm)	0.5	
FP Max(mm)	12.5	
OP(mm)	9.6 ± 0.8	

MPF_Z2F100
MPF_Z2F160



型號 Model	MPF_Z2F100	MPF_Z2F160
OF Max(N)	0.50	0.60
RF Min(N)	0.05	0.10
PT Max(mm)	0.8	
OT Min(mm)	0.5	
MD Max(mm)	14.5	
OP(mm)	10.5 ± 1	

MPF_Z6F100
MPF_Z6F160



型號 Model	MPF_Z6F100	MPF_Z6F160
OF Max(N)	0.40	0.50
RF Min(N)	0.05	0.05
OT Min(mm)	0.8	
MD Max(mm)	0.5	
FP Max(mm)	14.5	
OP(mm)	11.6 ± 1.2	

How to order:

MPF

1 TEMPERATURE:
blank 25T105

2 CURRENT RATINGS:
blank 3GPA 125V/250VAC
3RA 125/250VAC
3(1)A 125/250VAC
3A 30VDC
A 5GPA 125V/250VAC
5RA 125/250VAC
5(2)A 125/250VAC
1/4hp 250VAC
4A 30VDC
F 0.1GPA 125V/250VAC
0.1RA 125/250VAC
0.1(0.05)A 125/250VAC
0.1A 30VDC

3 CONTACT:
Z SPDT
T SPST-NO
D SPST-NC
4 LEVER TYPE:
0 No Lever
1 Short Lever
2 Long Lever
6 Arc Lever

5 TERMINAL TYPES:
T 110 quick-connect
F Solder Terminal
P PCB Terminal
S PCB Terminal Type 2
L Left Side Terminal
R Right Side Terminal
W Wire Type
6 OPERATING FORCE:
100 1.0N
160 1.6N

7 WIRE DIRECTION:
B Bottom Wire Type
L Left Side Wire Type
R Right Side Wire Type

8 WIRE LENGTH:
free ...mm
text

9 PROTECTION DEGREE:
blank IP50 (Terminal Type)
IP67 (Wire Type)



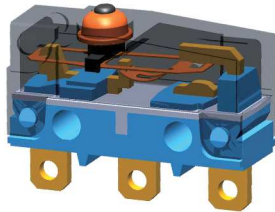
Micro Switches

Micro Switches Waterproof

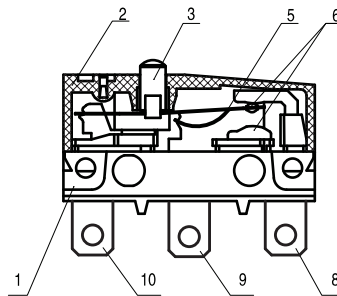
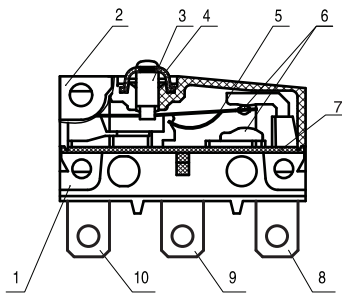
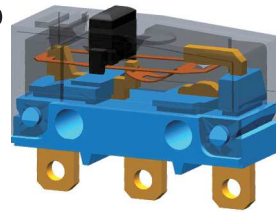
MPF Series

Internal Configuration Drawing

IP67



IP40



- 1 基座 Case
- 2 蓋 Cover
- 3 按鈕 Plunger
- 4 密封圈 Hermetic loop
- 5 可動片 Moving piece
- 6 電觸點 Contact
- 7 密封條 Sealing strip
- 8 常閉端子 NC terminal
- 9 常開端子 NO terminal
- 10 支架 Support

Circuit Illustration

電路圖 Schematic diagram		
	轉換式 SPDT 	常開式 SPST-NO
	常閉式 SPST-NC 	

Outline Drawing of Wire Type

底部導綫型 Bottom wire type	左面導綫型 Left side wire type	右面導綫型 Right side wire type
B 	L 	R

Mounting Hole Dimensions

PCB端子 PCB terminal		PCB端子之二 PCB terminal No. 2	

Terminal Dimensions

PCB端子 PCB terminal	焊接端子 Solder terminal	快接端子 #110 Quick connect terminal #110
<p>公共端 Common terminal</p> <p>常開端 NO terminal</p> <p>常閉端 NC terminal</p>		
PCB端子之二 PCB terminal No. 2	左側面PCB端子 Left side PCB terminal	右側面PCB端子 Right side PCB terminal

Specifications

項目 Item	特性值 Value	
工作速度 Operating speed	1mm ~ 500mm/s (無動臂時 No lever)	
工作頻率 Operating frequency	機械 60次/min; 電氣 25次/min Mechanical 60 cycles/min; electrical 25 cycles/min	
絕緣電阻 Insulation resistance	≥ 100MΩ (500VDC)	
接觸電阻 Contact resistance	≤ 50mΩ (不帶導線型 Without wire)	
耐電壓 Test voltage	不相接端子間 Between non-continuous terminals	AC1000V, 50/60Hz, 1min
	端子與不帶電金屬件之間 Between each terminal and other exposed metal parts	AC1500V, 50/60Hz, 1min
	端子與地(外殼)之間 Between each terminal and ground	AC1500V, 50/60Hz, 1min
抗振動 Vibration resistance	10 ~ 55Hz, 1.5mm 雙振幅 Double amplitude	
抗衝擊 Shock resistance	最小 Min.: 294m/s ² (30G) 接觸故障持續時間不超過1ms Contact opening max. 1 msec.	
防觸電保護等級 Electric shock proof protection degree	I 級 class	
外殼防護等級 Case protection degree	IEC IP65 (端子型 Terminal type) IEC IP67 (導線型 Wire type)	
壽命 Life	機械 ≥ 500,000次 Mechanical ≥ 500,000 cycles 電氣 ≥ 50,000次 Electrical ≥ 50,000 cycles	
安全認證 Safety approvals	UL、CUL、ENEC、DEMKO	