

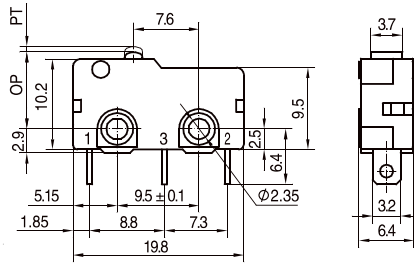
Micro Switches

Micro Switches

MP82 Series



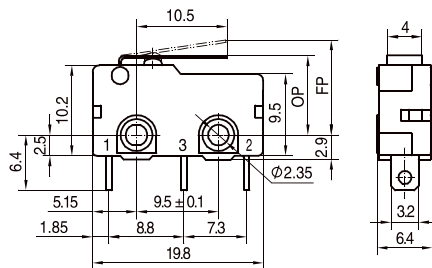
MP82_00



型號 Model	MP82_Z00_S10	MP82_Z00_S15	MP82_Z00_S20	MP82_Z00_S30
OF Max(N)	1.00	1.50	2.00	3.00
RF Min(N)	0.15	0.30	0.50	0.70
PT Max(mm)	0.8			
OT Min(mm)	0.5			
MD Max(mm)	0.2			
OP(mm)	8.6 ± 0.4			



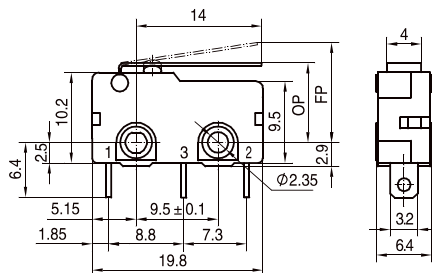
MP82_01



型號 Model	MP82_Z01_S10	MP82_Z01_S15	MP82_Z01_S20	MP82_Z01_S30
OF Max(N)	0.40	0.50	0.60	0.80
RF Min(N)	0.10	0.15	0.20	0.30
OT Min(mm)	1.0			
MD Max(mm)	0.6			
FP Max(mm)	11.5			
OP(mm)	9 ± 0.8			



MP82_02



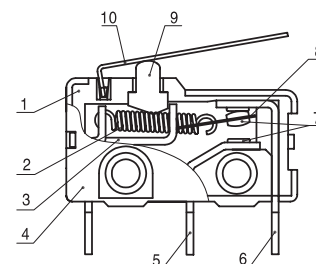
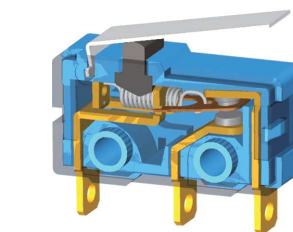
型號 Model	MP82_Z02_S10	MP82_Z02_S15	MP82_Z02_S20	MP82_Z02_S30
OF Max(N)	0.25	0.40	0.50	0.80
RF Min(N)	0.04	0.08	0.15	0.20
OT Min(mm)	0.8			
MD Max(mm)	0.8			
FP Max(mm)	12.5			
OP(mm)	8.9 ± 1			

How to order:

MP82

- | | | |
|--------------------------|-------------------------|---------------------------|
| 1 Temperature: | 4 ACTUATOR TYPE: | 6 TERMINAL TYPE: |
| blank 85°C | 00 No lever | S Solder Terminal |
| H 125°C | 01 Short lever | P PCB terminal |
| 2 RATING CURRENT: | 02 Middle lever | L Left side PCB terminal |
| N 5A 125/250 VAC | 03 Long lever | R Right side PCB terminal |
| H 10A 250 VAC | 04 Roller | Q Quick Connect terminal |
| L 3A 250 VAC | 05 Arc lever | 7 OPERATING FORCE: |
| S 1A 250 VAC | 06 Not standard lever | 05 0.5N |
| M 0.1A 250 VAC | 5 PLUNGER SPEC: | 10 1N |
| 3 CONTACT: | N Standard plunger | 15 1.5N |
| Z SPDT | L Long plunger | 20 2N |
| T SPST-NO | S Short plunger | 30 3N |
| D SPST-NC | D Abnormity plunger | |

内部構造圖 Internal configuration drawing



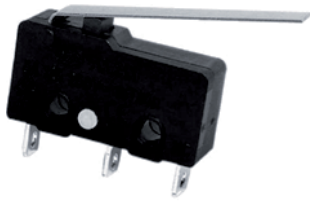
- | | |
|---------|--------------|
| 1: 底座 | Case |
| 2: 拉簧 | Pull spring |
| 3: 支架 | Support |
| 4: 蓋 | Cover |
| 5: 常開端子 | NO terminal |
| 6: 常閉端子 | NC terminal |
| 7: 電觸點 | Contact |
| 8: 可動片 | Moving piece |
| 9: 按鈕 | Plunger |
| 10: 動臂 | Lever |



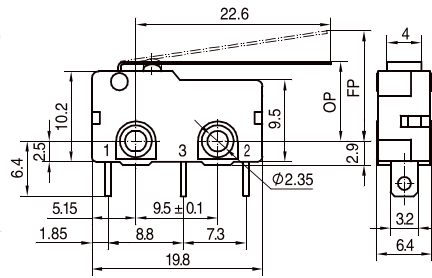
Micro Switches

Micro Switches

MP82 Series



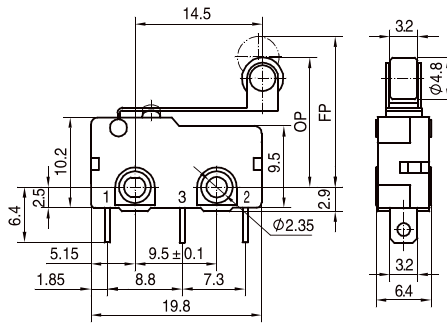
MP82_03



型號 Model	MP82_Z03_S10	MP82_Z03_S15	MP82_Z03_S20	MP82_Z03_S30
OF Max(N)	0.20	0.30	0.35	0.45
RF Min(N)	0.03	0.08	0.10	0.15
OT Min(mm)	1.6			
MD Max(mm)	1.5			
FP Max(mm)	15.0			
OP(mm)	9 ± 1.5			



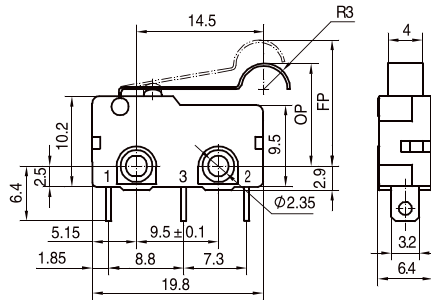
MP82_04



型號 Model	MP82_Z04_S10	MP82_Z04_S15	MP82_Z04_S20	MP82_Z04_S30
OF Max(N)	0.25	0.40	0.50	0.80
RF Min(N)	0.04	0.08	0.15	0.20
OT Min(mm)	1.2			
MD Max(mm)	0.9			
FP Max(mm)	19.0			
OP(mm)	15.2 ± 1			



MP82_05



型號 Model	MP82_Z05_S10	MP82_Z05_S15	MP82_Z05_S20	MP82_Z05_S30
OF Max(N)	0.25	0.40	0.50	0.80
RF Min(N)	0.04	0.08	0.15	0.20
OT Min(mm)	1.5			
MD Max(mm)	0.8			
FP Max(mm)	16.5			
OP(mm)	13.4 ± 1			

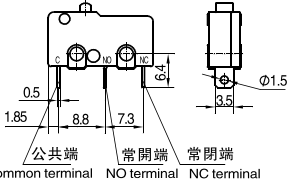
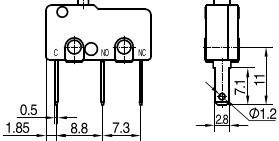
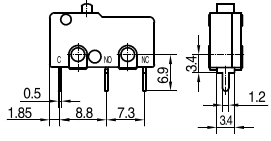
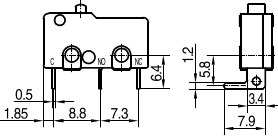
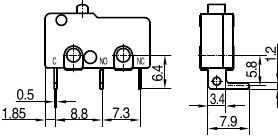
Not Standard Levers For Choose

動臂代號 Lever code	外形特徵尺寸 Outline characteristic dimensions	動臂代號 Lever code	外形特徵尺寸 Outline characteristic dimensions	動臂代號 Lever code	外形特徵尺寸 Outline characteristic dimensions
2A		C		K	
N		G		Q1	
J		F1		S1	
J1		6A		5A	
J2		6C			

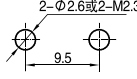
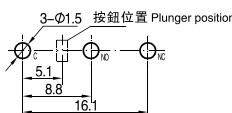
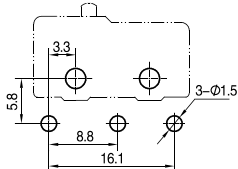
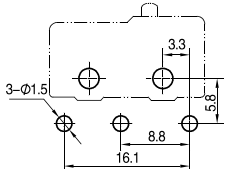
Plunger Spec Illustration

按鈕標記 Mark on plunger	N	S
按鈕尺寸 Plunger dimensions		
	L	D

Terminal Dimensions

<p>S 焊接端子 Solder terminal</p>  <p>公共端 Common terminal NO terminal NC terminal</p>	<p>Q 快接端子#110 Quick connect terminal #110</p> 	<p>P PCB端子 PCB terminal</p> 	
<p>L 左側面PCB端子 Left side PCB terminal</p> 		<p>R 右側面PCB端子 Right side PCB terminal</p> 	

Mounting Hole Dimensions

	<p>PCB端子 PCB terminal</p>  <p>3-Ø1.5 按鈕位置 Plunger position</p>	<p>左側面PCB端子 Left side PCB terminal</p> 	<p>右側面PCB端子 Right side PCB terminal</p> 
---	---	---	--

Specifications

項目 Item	特性值 Value
工作速度 Operating speed	0.1mm ~ 1m/s (與驅動方式有關) (Related with actuator forms)
工作頻率 Operating frequency	機械 60次/min; 電氣 25次/min Mechanical 60 cycles/min; Electrical 25 cycles/min
絕緣電阻 Insulation resistance	≥100MΩ (500VDC)
接觸電阻 Contact resistance	動作力>0.5N: ≤30mΩ (見注) 動作力≤0.5N: ≤50mΩ (見注) OF>0.5N: ≤30mΩ (see note) OF≤0.5N: ≤50mΩ (see note)
耐電壓 Test voltage	同極不相接端子間 Between terminals of the same polarity AC1000V, 50/60Hz, 1min
	帶電金屬零件與地(外殼)之間、接線端與不帶電金屬件之間 Between current-carrying metal parts and ground(case), and between each terminal and non-current-carrying metal parts. AC1500V, 50/60Hz, 1min
抗振動 Vibration resistance	10 ~ 55Hz, 1.5mm 雙振幅 Double amplitude
抗衝擊 Shock resistance	破壞: 動作力>0.5N: 1000m/s ² (約100G)max 動作力≤0.5N: 500m/s ² (約50G)max 故障: 動作力>0.5N: 300m/s ² (約30G)max 動作力≤0.5N: 200m/s ² (約20G)max Destruction: OF>0.5N: 1000m/s ² (approx. 100G)max OF≤0.5N: 500m/s ² (approx. 50G)max Malfunction: OF>0.5N: 300m/s ² (approx. 30G)max OF≤0.5N: 200m/s ² (approx. 20G)max
壽命 Life	機械 ≥1,000,000次; Mechanical ≥1,000,000 cycles 電氣 ≥10,000次; Electrical ≥10,000cycles
質量 Weight	約1.6g(無動臂型) Approx. 1.6g(No lever)
安全認證 Safety approvals	UL, CUL, VDE, TUV, SEMKO, CE, EK, CQC

注: 指無動臂時按鈕上的動作力。 Note: Refers to the operating force of no lever.