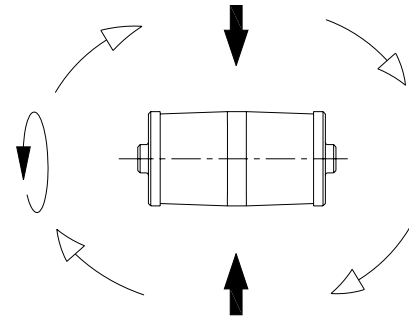
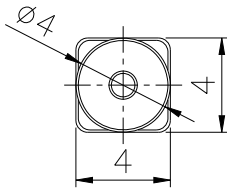
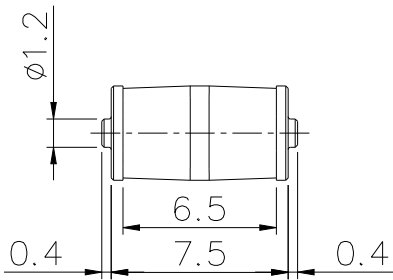


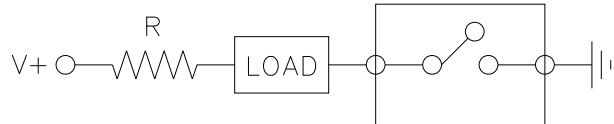
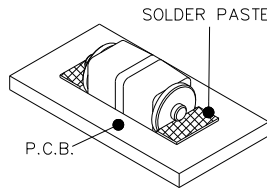
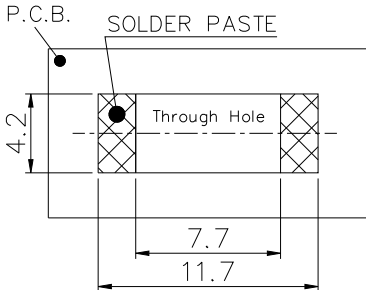


- Applications:
1. Remote controllers
 2. Earthquake detecting systems
 3. Alarm systems
 4. Sporting equipment
 5. Automotive devices
 6. Visual devices
 7. Home electrical appliances
 8. Information devices
 9. Communication devices

Dimensions/ Operation/ P.C.B. Layout (Unit: mm, Tolerance: ±0.25mm)



Drawing:
Switch will be "off" when product equipped with this switch is touched in any position



NV5 - 0A00

GENERAL SPECIFICATIONS

Features:

1. Tiny size & compact space.
2. Wing-shaped terminals, a feature enables half body of the sensor switch to be hurried into PCB.
3. Gold-plated ball and terminals, low possibility of oxidization.
4. All plastic material subject to industrial purpose meets with high temperature and fireproof function.
5. Simple ON an dOFF signals, easy for design.
6. No electricity consumption during detecting status.
7. RoHS compliance, an ideal substitute for mercury switch.
8. A more economical vibration detection option than IC design solution.

Bill Of Material:

1. Housing: Glass-Fiber Polyimide
2. Terminal: Copper Alloy, Gold plated(3μ") over Nickel
3. Ball: Copper Alloy, Gold Plated(3μ") over Nickel

Eletrical Characteristics:

1. Max. Contact Rating: 10mA, 5VDC
2. Insulation Resistance: 1000M Ω min. At 100 VDC
3. Switching type: Normal Close (NC)
4. Dielectric Strength: 500 VDC min. for 1 minute
5. Capacitance: 5pF max

Mechanical Characteristics:

1. Temperature Range: Operating: -25°C to +85°C ; Storage : -40°C to +85°C
2. Pull Force of Terminal: 500 gf for 1 minute
3. Operation Life: 100,000 Cycles
4. Conductive Rate (Switch-on Rate): min. over 90%
5. Humidity: 95% RH, 40°C for 96 hrs.
6. Solder ability : After flux 245°C for 5±0.5 seconds 95% coverage

» NOTE

1. Suggestion Contact Rating: 1.0 mA 5V.
2. For the continued product improvement as one of the company policy, specifications may change or update without notice. The latest information can be obtained through our sales offices. Normally, all products are supplied under our standard conditions.

» PRECAUTIONS FOR USE

1. The product is used mainly in electronic devices such as automotive devices, visual devices, home electrical appliances, information devices and communication settings. If the products is intended to be used for other endurance equipments requiring higher safety and reliability such as life support system, space and aviations devices, disaster and safety system, it's necessary to make verification of conformity or contact us for the details before using.
2. Don't try to clean the switch with a solvent or similar substance after the soldering Prozess.
3. The switch might be damaged if using the water-soluble flux.
4. The switch might be apart if the soldering condition over specification.
5. Don't use the switch in the environment with high humidity or other bedewing possibility, as it may cause leaking among the terminals.
6. It might catch fire if the rating exceeds the specifications. Never use the switch beyond the Rating.

» PACKAGE

	Part Number	Package	Quantity	Total	Dimension (mm)
1.	NV5-0A00	Tape & Reel	2,000 pcs	2,000 pcs	φ330*17H
		Inner Box	2 reels	4,000 pcs	355L*340W*68H
		Carton	10 boxes	40,000 pcs	703L*364W*380H