

# Detector Switches

## 2-Way Horizontal SMT Detector Switches

DF55 Series

### General Specifications

#### MATERIALS

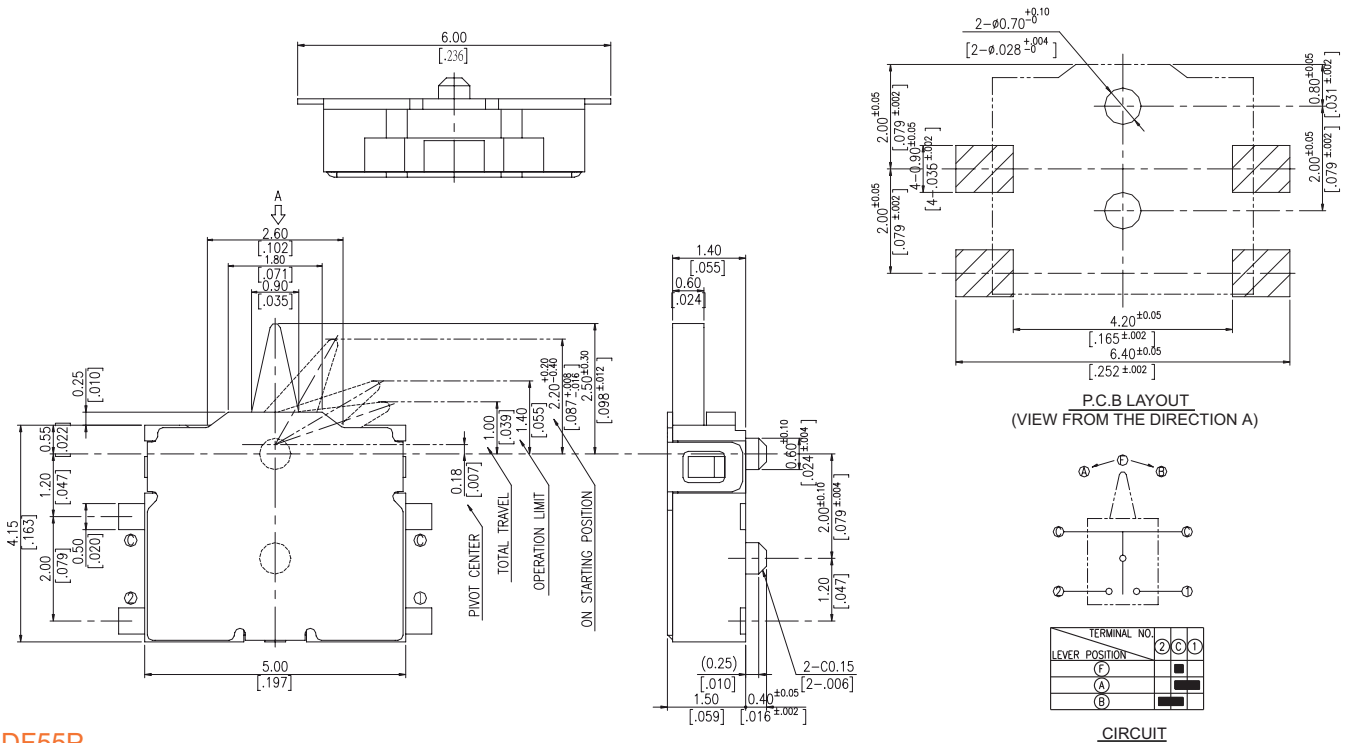
- » Cover: Stainless Steel
- » Contact: Phosphor bronze with silver plated
- » Terminal: Phosphor bronze with silver plated
- » Base: UL 94V-0 Nylon High-Temp. Thermoplastic black
- » Stem: UL 94V-0 LCP High-Temp. Thermoplastic black
- » Slide: UL 94V-0 Nylon High-Temp. Thermoplastic black
- » Spring: Stainless Steel

#### MECHANICAL

- » Operation Force: 30gf max.
- » Stroke: 1.5±0.3 mm
- » Operation Temperature: -40°C to +85°C
- » Storage Temperature: -40°C to +85°C

#### ELECTRICAL

- » Electrical Life: 100,000 cycles
- » Rating: 10mA, 5VDC
- » Contact Arrangement: 1 pole 1 throw
- » Dielectric Strength: 100 VAC / 1 minute.
- » Contact Resistance : 500mΩ Max.
- » Insulation Resistance : 100 M Ω Min.

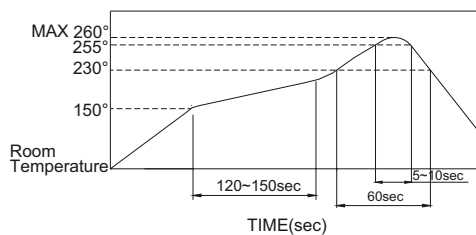


### DF55P

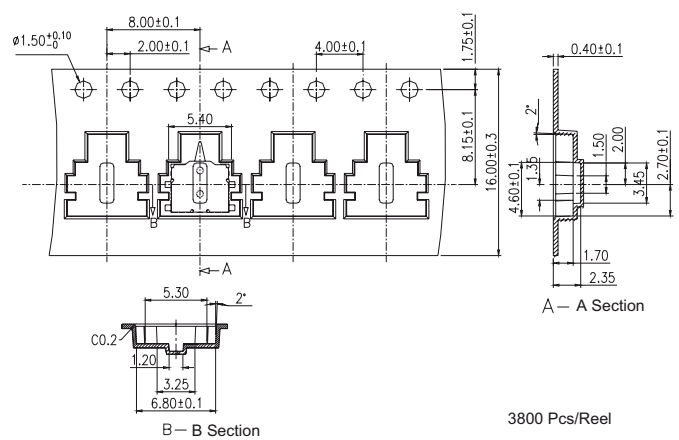
#### LEADFREE SOLDERING PROCESSES

- » Hand Soldering : Use a soldering iron of 30 watts, controlled at 320°C approximately 2 seconds while applying.
- » Wave Soldering : Recommended solder temperature at 260°C max. 5 seconds for through hole type.
- » Reflow Soldering : When applying reflow soldering, the peak temperature or the reflow oven should be set to 260°C max.
- » Make sure that there is no flux rise on the surface of the PCB.

Reflow Temperature Profile:



#### TAPE & REEL PACKING



3800 Pcs/Reel

### How to order:

DF55 1 2

- 1** POST: P Base With Post
- 2** PACKAGE STYLE: TR Tape & Reel

General Tolerance: ± 0.2 mm