

# Detector Switches

## Vertical Type Detector Switches

## DF35 Series

### General Specifications



#### MATERIALS

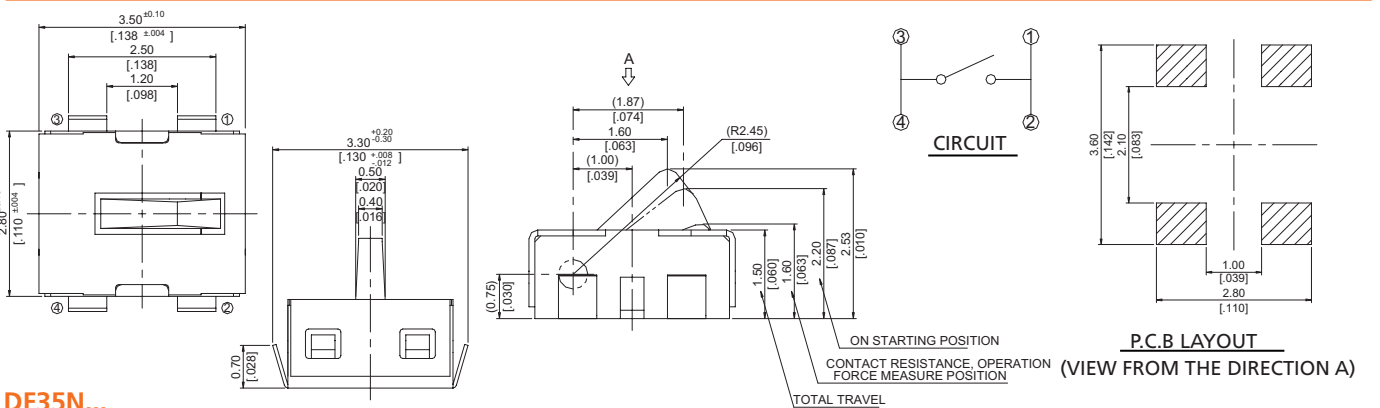
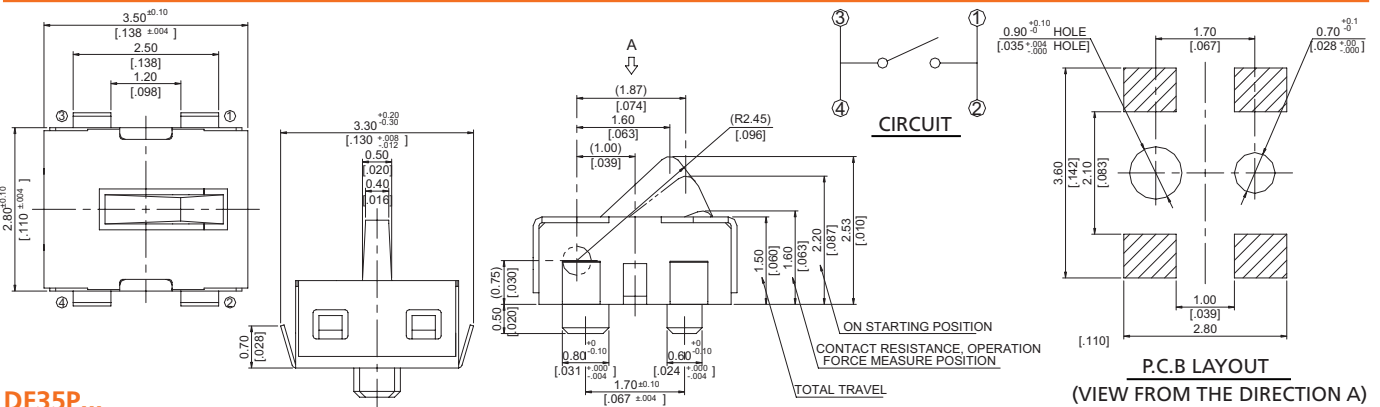
- » Cover: Stainless steel.
- » Contact: Phosphor bronze with silver plated.
- » Terminal: Phosphor bronze with silver plated.
- » Base: LCP High-Temp. Thermoplastic.
- » Stem: LCP High-Temp. Thermoplastic.

#### MECHANICAL

- » Operation Force: 50 gf max.
- » Stroke: 1.03 mm Max.
- » Operation Temperature: -10°C to +60°C
- » Storage Temperature: -20°C to +70°C

#### ELECTRICAL

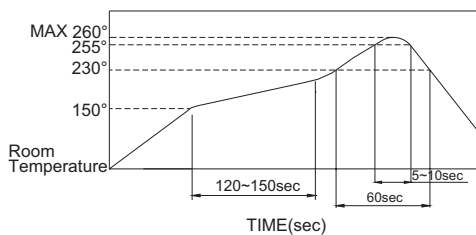
- » Electrical Life: 100,000 cycles
- » Rating: 1mA, 5VDC
- » Contact Arrangement: 1 pole 1 throw
- » Dielectric Strength: 100 VAC / 1 minute.
- » Contact Resistance : 2 Max.
- » Insulation Resistance : 100 M Min , at 100 VDC.



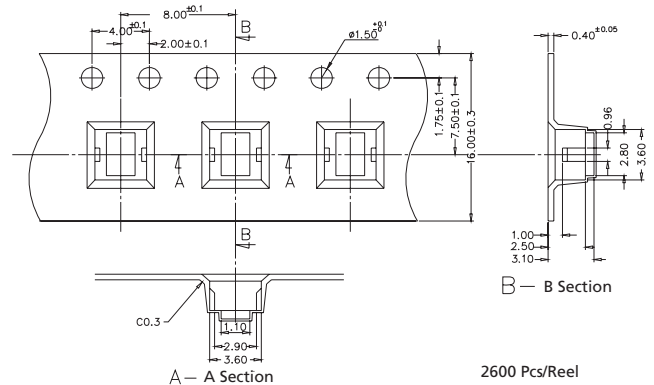
#### LEADFREE SOLDERING PROCESSES

- » Hand Soldering : Use a soldering iron of 30 watts, controlled at 350°C approximately max 5 seconds while applying.
- » Reflow Soldering: When applying reflow soldering, the peak temperature or the reflow oven should be set to 260°C max.

#### Reflow Temperature Profile:



#### TAPE & REEL PACKING



#### How to order:

DF35 1 2

- 1** POST:
- 2** PACKAGE STYLE:
- N** Without Post
- TR** Tape & Reel
- P** With Post

General Tolerance: ±0.2mm