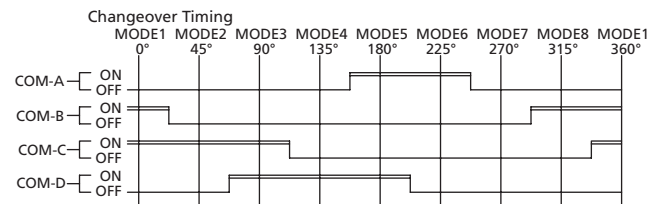


Changeover Angle

	MODE1	MODE2	MODE3	MODE4	MODE5	MODE6	MODE7	MODE8
COM-A	OFF	OFF	OFF	OFF	ON	OFF	OFF	OFF
COM-B	ON	OFF	OFF	OFF	OFF	OFF	OFF	ON
COM-C	ON	ON	ON	OFF	OFF	OFF	OFF	OFF
COM-D	OFF	OFF	ON	ON	ON	OFF	OFF	OFF

EC1A 7 Circuit



Changeover Angle

	MODE1	MODE2	MODE3	MODE4	MODE5	MODE6	MODE7	MODE8
COM-A	OFF	OFF	OFF	OFF	ON	OFF	OFF	OFF
COM-B	ON	OFF	OFF	OFF	OFF	OFF	OFF	ON
COM-C	ON	ON	ON	OFF	OFF	OFF	OFF	OFF
COM-D	OFF	OFF	ON	ON	ON	OFF	OFF	OFF

EC1K 8 Circuit

### How to order:

EC1

#### 1 CIRCUIT & BASE COLOR:

- A 7 Circuit & Black Base
- K 8 Circuit & Brown Base

#### 2 GROUND TERMINAL:

- N Without Ground Terminal (Standard)
- G With Ground Terminal

#### 3 ACTUATING FORCE & COLOR OF ACTUATOR:

- 000 Non-Click & Brown Actuator
- 130 130±50gf & Brown Actuator
- 040 40±30gf & Blue Actuator

#### 4 PACKAGE:

- TR Tape & Reel

### General Specifications:

#### FEATURES

- » Surface mounting type low profile encoder switches
- » Non operation feeling type is available

#### MATERIALS

- » Contact: Alloy copper
- » Spring Plate: Stainless steel
- » Terminal: Brass with silver plated

#### MECHANICAL

- » Mechanical Life: 200mΩ max. 10,000 cycles
- » Operating Temperature Range: -20°C to +80°C
- » Storage Temperature: -40°C to +85°C

#### ELECTRICAL

- » Electrical Life: 200mΩ max. 10,000 cycles
- » Non-Switching Rating: 100mA, 50VDC
- » Switching Rating: 25mA, 24VDC

#### LEADFREE SOLDERING PROCESSES

- » Reflow Soldering: When applying reflow soldering, the peak temperature or the reflow oven should be set to 260°C 10 seconds max.