

# Pushbutton Switches

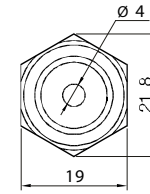
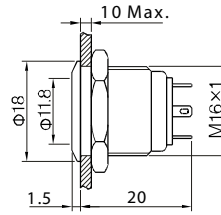
## Anti-Vandal Pushbutton Switch - Mounting Hole Ø16mm

PAV16 Series

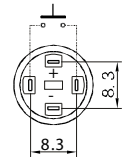


Terminal Type: Solder Lug 2x0.5mm  
Front Shape: Flat Round  
Illumination: Dot Illuminated blue

PAV16NFS1GN



Top View

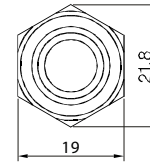
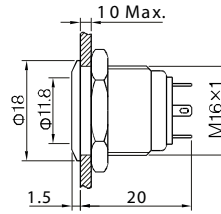


Terminal Arrangement

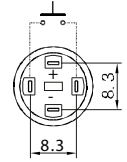


Terminal Type: Solder Lug 2x0.5mm  
Front Shape: Flat Round  
Illumination: Ring Illuminated red

PAV16NFS2CN



Top View



Terminal Arrangement

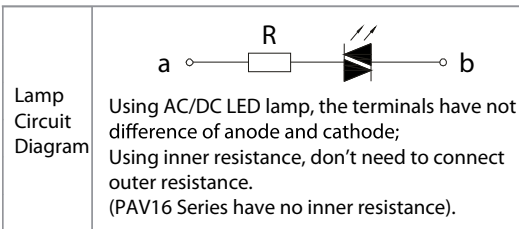
### LED SPECIFICATIONS

| Color              | Red          | Yellow | Orange | Green       | Blue | White |
|--------------------|--------------|--------|--------|-------------|------|-------|
| Rated Voltage (Ue) | AC/DC 1.7 V  |        |        | AC/DC 2.8 V |      |       |
| Rated Current (Ie) | 20 mA        |        |        |             |      |       |
| Life               | 40,000 hours |        |        |             |      |       |

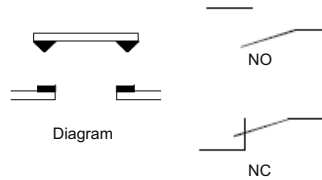
Formula

$$R = \frac{U - U_e}{I_e}$$

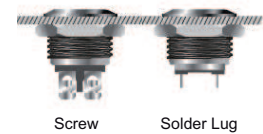
| Current-Limiting Resistance Configuration Table | Operating Voltage (U) |       |        |        | 6V         | 12V        | 24V         | 36V       |
|---|-----------------------|-------|--------|--------|------------|------------|-------------|-----------|
|   | Current-Limiting      | Red   | Yellow | Orange | 210Ω, 1/4W | 510Ω, 1/2W | 1.2KΩ, 3/4W | 2.2KΩ, 1W |
|   |                       | Green | Blue   | White  | 160Ω, 1/4W | 460Ω, 1/2W | 1.2KΩ, 3/4W | 2.2KΩ, 1W |



### SWITCHING



### TERMINALS



### HOW TO ORDER:

PAV16

#### 1 SWITCHING CIRCUIT:

- N 1NO (Standard)
- C 1NC (Made by request)

#### 2 FRONT SHAPE:

- D Domed
- F Flat Round
- H High Round
- PF Super Flat Head, Flat Button
- PH Super Flat Head, High Flat Button

#### 3 TERMINATION:

- W Screw
- S Solder Lug

#### 4 ILLUMINATION:

- 0 No Illumination
- 1 Dot Type Illumination
- 2 Ring Type Illumination

#### 5 LED COLOR:

- N No Illumination
- C Red
- D Orange
- F Green
- G Blue
- E Yellow
- B White

#### 6 LED VOLTAGE:

- 0 No Illumination
  - 6 AC/DC 6V
  - 12 AC/DC 12V
  - 24 AC/DC 24V
  - 110 AC/DC 110V
  - 220 AC/DC 220V
- (Other Voltage can be made by request)

#### 7 ENGRAVING:

- A Stop
  - B Start
  - C Return
  - D Reset
  - E |
  - F ||
  - G ◀
  - H ↑
  - J ■
  - K ⏻
  - L ⚡
  - M ⚙
  - N ○
- (Other engraving can be made by request)

#### 8 MATERIAL:

- blank Stainless Steel
- N Nickel-Plated Brass
- G Gold-Plated Brass

### SPECIFICATIONS:

#### CHARACTERISTICS

- > Protection Degree: IP65
- > Anti Vandal Degree: IK08
- > Switch Rating: 2A 36VDC
- > Operation Type: Momentary
- > Contact Configuration: 1NO or 1NC
- > Contact Resistance: 50mΩ Max.
- > Insulation Resistance: 1000MΩ Min.
- > Dielectric Intensity: 2000VAC
- > Operating Temperature: -20°C to +55°C
- > Mechanical Life: 1,000,000 cycles
- > Electrical Life: 200,000 cycles
- > Panel Thickness: 1 to 6 mm
- > Torque: 5 to 14 Nm
- > Operation Pressure: about 4 N
- > Operation Travel: about 1.5mm
- > Switching: Double-Break Slow-Motion Contact

#### MATERIAL

- > Contact: Silver alloy
- > Button: Stainless steel(Nickel Plated, Gold Plated)
- > Body: Stainless steel(Nickel Plated, Gold Plated)
- > Base: PBT

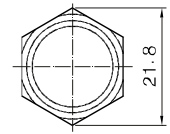
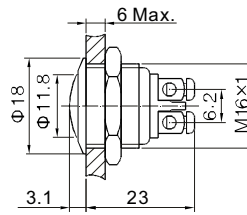
# Pushbutton Switches

Anti-Vandal Pushbutton Switch - Mounting Hole  $\text{\O}16\text{mm}$

PAV16 Series



Terminal Type: Screw Terminal  
Front Shape: Domed  
Illumination: Non Illuminated

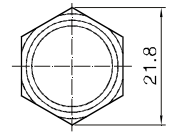
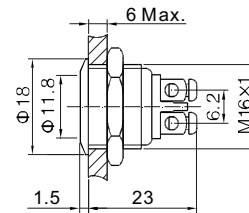


Top View

PAV16NDW0NN



Terminal Type: Screw Terminal  
Front Shape: Flat Round  
Illumination: Non Illuminated

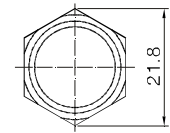
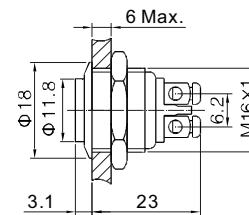


Top View

PAV16NFW0NN



Terminal Type: Screw Terminal  
Front Shape: High Round  
Illumination: Non Illuminated

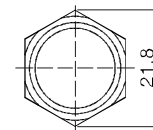
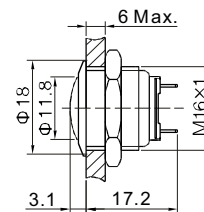


Top View

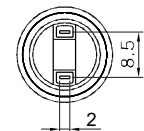
PAV16NHW0NN



Terminal Type: Solder Lug  
Front Shape: Domed  
Illumination: Non Illuminated



Top View

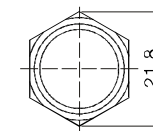
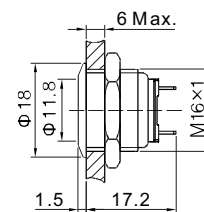


Terminal Arrangement

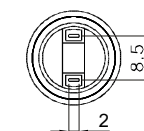
PAV16NDS0NN



Terminal Type: Solder Lug  
Front Shape: Flat round  
Illumination: Non Illuminated



Top View

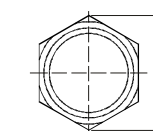
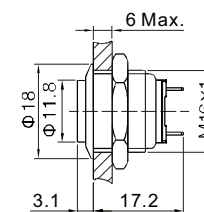


Terminal Arrangement

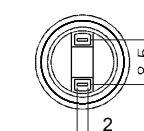
PAV16NFS0NN



Terminal Type: Solder Lug  
Front Shape: High round  
Illumination: Non Illuminated



Top View



Terminal Arrangement

PAV16NHS0NN

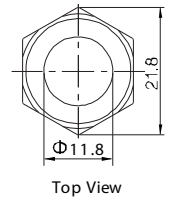
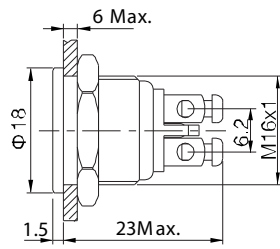
# Pushbutton Switches

Anti-Vandal Pushbutton Switch - Mounting Hole  $\text{\O}16\text{mm}$

PAV16 Series



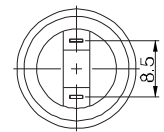
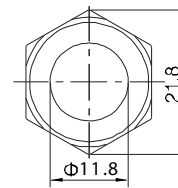
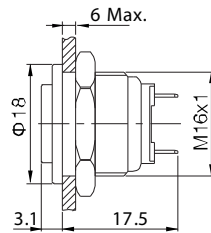
Terminal Type: Screw Terminal  
Front Shape: Super Flat  
Illumination: Non Illuminated



PAV16NPFW0NN



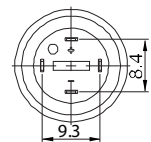
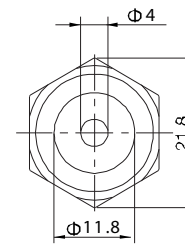
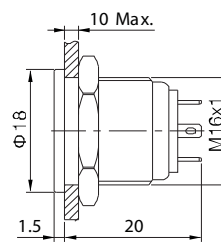
Terminal Type: Solder Lug  
Front Shape: Super Flat High  
Illumination: Non Illuminated



PAV16NPHS0NN



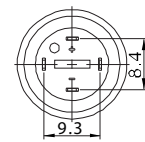
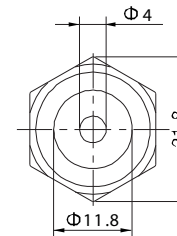
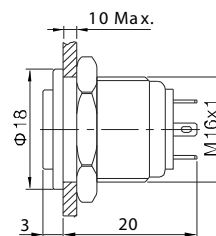
Terminal Type: Solder Lug  
Front Shape: Super Flat  
Illumination: Dot Illuminated



PAV16NPFS1C\_



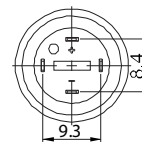
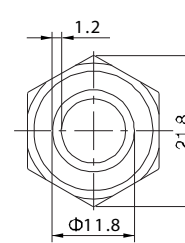
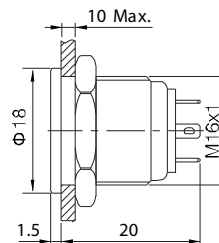
Terminal Type: Solder Lug  
Front Shape: Super Flat High  
Illumination: Dot Illuminated



PAV16NPHS1F\_



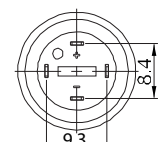
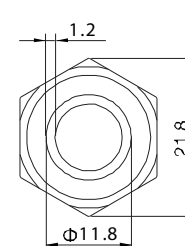
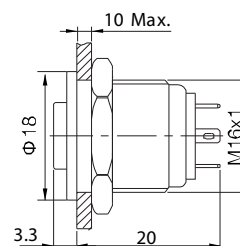
Terminal Type: Solder Lug  
Front Shape: Super Flat  
Illumination: Ring Illuminated



PAV16NPFS2C\_



Terminal Type: Solder Lug  
Front Shape: Super Flat High  
Illumination: Ring Illuminated



PAV16NPHS2C\_