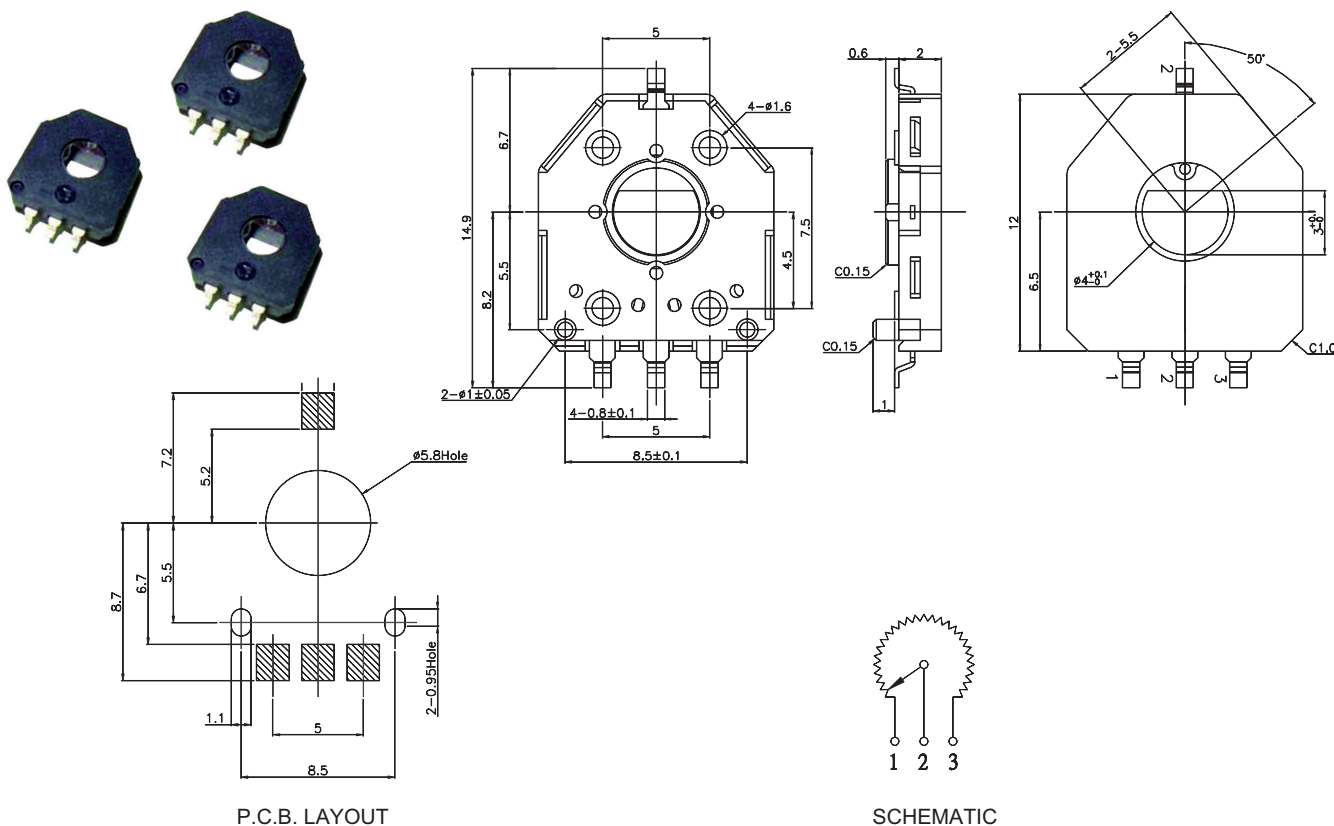


DIMENSIONS (Unit: MM)



P.C.B. LAYOUT

SCHEMATIC

SPECIFICATIONS

ELECTRICAL CHARACTERISTICS:

- > Total Resistance Range: 1K to 100KΩ ±20%
- > Taper Style: B Taper linear
- > Power Rated: 0.1W
- > Independent Linearity: ±2%
- > Rotational Noise: 80mV Max.
- > T.C.R.: ±500ppm/°C

MECHANICAL CHARACTERISTICS:

- > Effective Electrical Angle: 333±3°
- > Rotational Torque: 0 to 30 gf.cm
- > Push Pull Strength of Shaft: 1.0Kgf Min. for 10 Seconds Min.
- > Total Rotational Angle: 360° (Endless)

ENVIRONMENTAL CHARACTERISTICS:

- > Storage Temperature: -40°C to +120°C
- > Operating Temperature: -40°C to +120°C
- > Life Cycles: 1,000,000 Cycles Min.
- > Heat Resistance: +120°C±3°C, 250H±8H, ΔTR: ±20%, Linearity: ±2%
- > Cold Resistance: -40°C±3°C, 168H±4H, ΔTR: ±20%, Linearity: ±2%
- > Humidity Resistance: +60°C±2°C, 90 to 95 RH, 250H±8H, ΔTR: ±20%, Linearity: ±2%
- > Temperature Cycles: -40°C to +120°C, 5 Cycles, ΔTR: ±20%, Linearity: ±2%

HOW TO ORDER

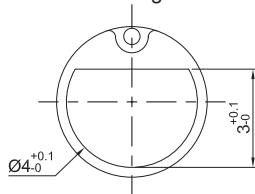
NE11 1 2 3 4 5

1 TERMINALS TYPE:

S SMT Type Terminals

2 ROTOR TYPE

D D Type (Standard) Drawing:



3 RESISTANCE TAPER:

B Linear

4 TOTAL RESISTANCE (TR):

1K 1KΩ
2K 2KΩ
5K 5KΩ
10K 10KΩ
20K 20KΩ
50K 50KΩ
100K 100KΩ

5 ELECTRICAL ANGLE:

120 120°
150 150°
180 180°
250 250°
320 320°
333 333°