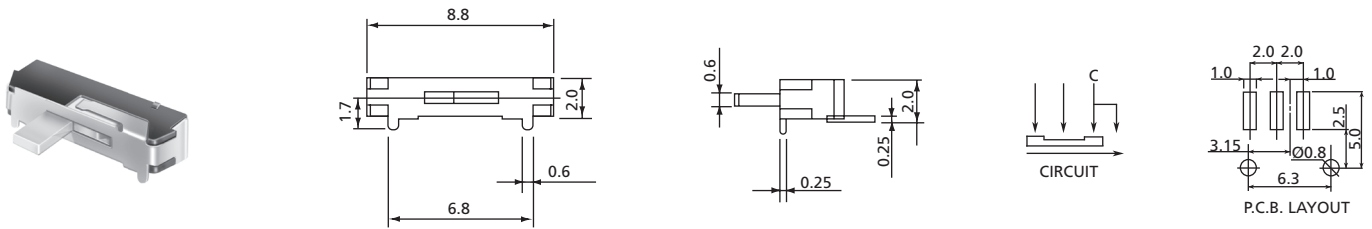


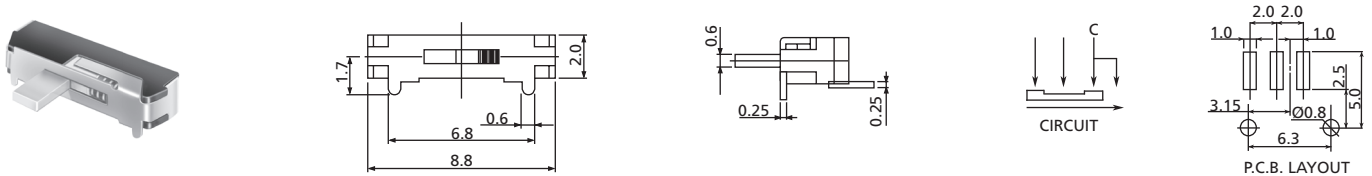
# Slide Switches

## 8.8 mm Horizontal Slide Switches

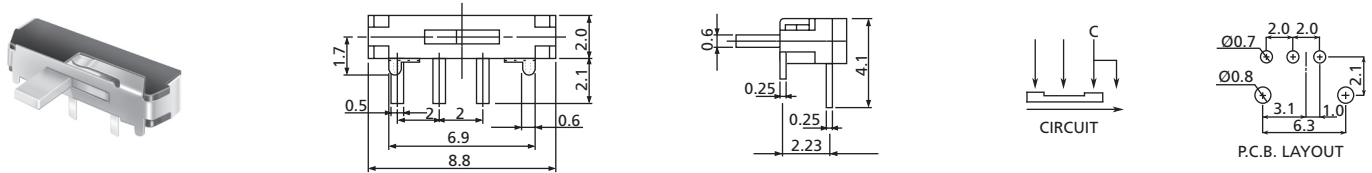
## SB3 Series



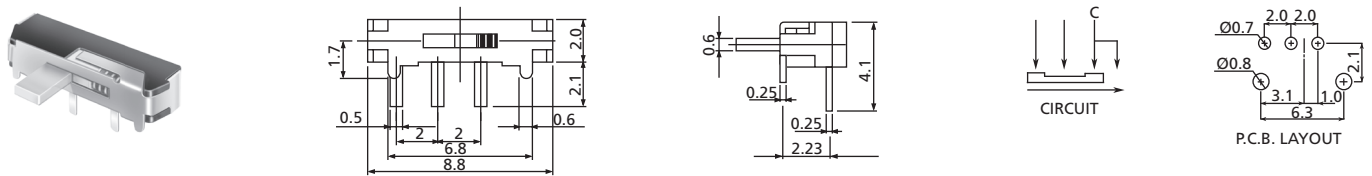
**SB3SO** SMT Terminals, without Spring Return



**SB3SR** SMT Terminals, with Spring Return



**SB3HO** THT Terminals, without Spring Return



**SB3HR** THT Terminals, with Spring Return

### How to order:

SB3

#### 1 TYPE OF TERMINAL:

- S SMT
- H THT

#### 2 SPRING RETURN:

- O Without Spring Return
- R With Spring Return

#### 3 EMBOSSING COVER:

- E With Embossing Cover (Standard)
- N Without Embossing Cover

#### 4 PACKAGING:

- TR Tape & Reel (Only SB3S)

### General Specifications:

**Rating:** DC6V 0.3A

**Circuit:** 1C-2P

**Timing:** Non-Shorting

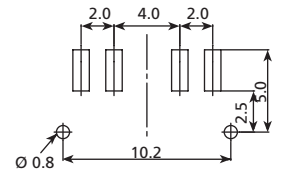
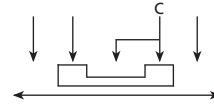
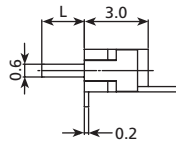
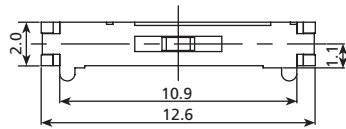
**Travel:** 2 ± 0.1 mm

**Operating Force:** 150 ± 100 gf

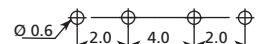
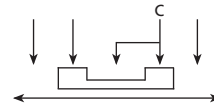
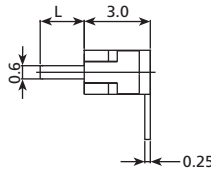
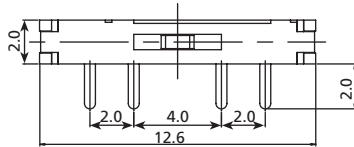
# Slide Switches

## 12.6 mm Horizontal Side Switches

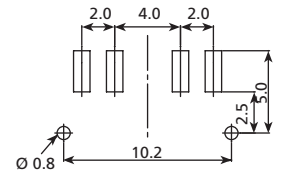
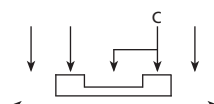
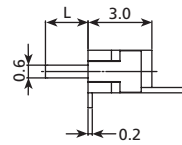
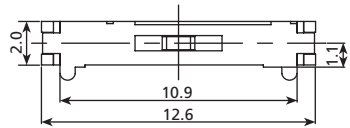
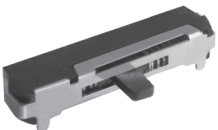
## SB4 Series



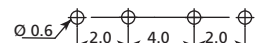
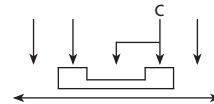
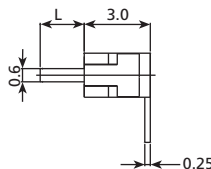
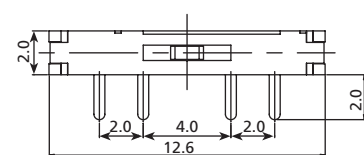
### SB4S1 Surface Mounting Type Terminals



### SB4H1 Thru Hole Type Terminals



### SB4S2 Surface Mounting Terminals



### SB4H2 Thru Hole Type Terminals

### How to order:

SB4 <sup>1</sup>  <sup>2</sup>

#### 1 TYPE OF SLIDE SWITCH:

- S SMT Slide Switch
- H THT Slide Switch

#### 2 OPERATING FORCE:

- 1 C-R: 250±100gf  
L-C-R: 200±100gf
- 2 L-C-R: 200gf

L = Left; C = Centre; R = Right

### General Specifications:

**Rating:** DC4V 0.3A

**Circuit:** 1C-3P

**Timing:** Non-Shorting

**Travel:** 2 mm

**Operating Life:** 10,000 Cycles