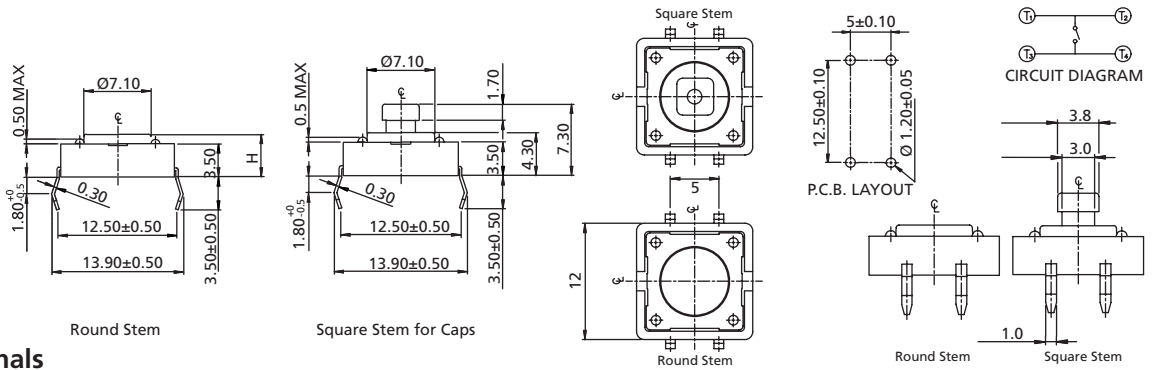


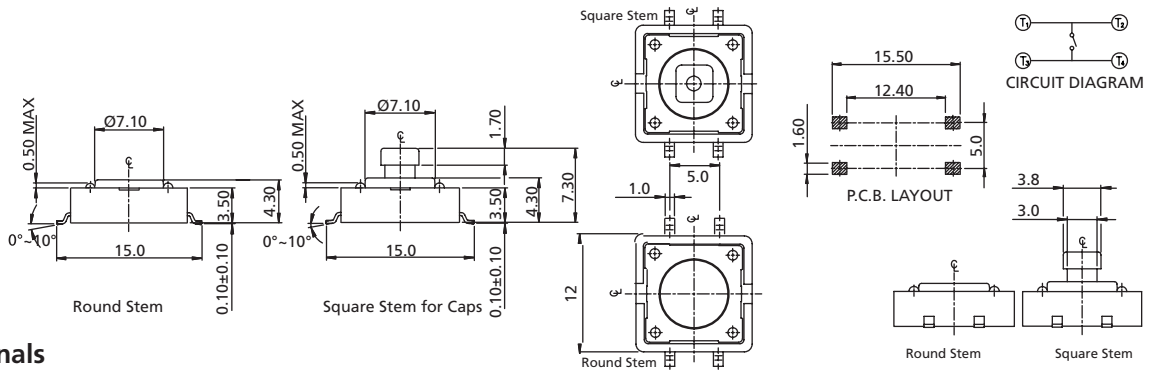
Tactile Switches

Standard 12 x 12 mm Tactile Switches

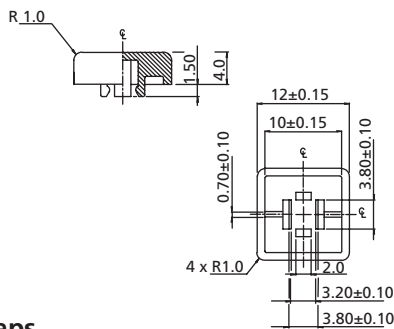
TP4 Series



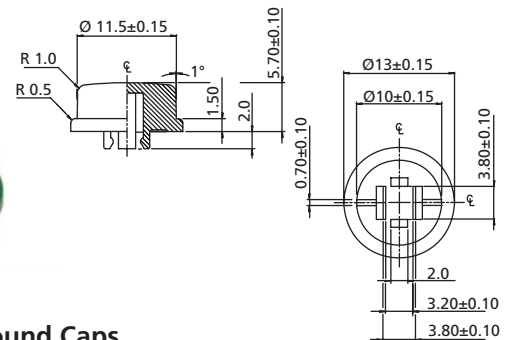
TP4H THT Terminals



TP4S SMT Terminals



K12S Square Caps



K12R Round Caps

How to order:

TP4 + (Caps)

- | | | | |
|--|--|--------------------------|-------------------------|
| 1 | TYPE OF TERMINALS: | 6 | PACKAGE STYLE: |
| H | THT | BK | Bulk Pack (TP4H Only) |
| S | SMT | TB | Tube |
| | | TR | Tape & Reel (TP4S Only) |
| 2 | POST (TP4H only) | Optional: | |
| No Code | Without Post | 7 | CAP TYPE |
| P | With Post | (Only for Square Stems): | |
| 3 | DIMENSION "H": | K12S | Square Caps |
| 1 | H=4.3mm (Round Stem) | K12R | Round Caps |
| 4 | H=7.3mm (Square Stem 3.8mm) | | |
| 5 | H=8.5mm (Round Stem) | 8 | COLOR OF CAPS: |
| Individual stem heights available by request | | A | Black |
| 4 | STEM COLOR & OPERATING FORCE: | B | Ivory |
| K | Brown & 160±50gf | C | Red |
| C | Red & 260±50gf | E | Yellow |
| J | Salmon & 320±80gf | F | Green |
| E | Yellow & 520±130gf | G | Blue |
| 5 | MATERIALS OF DOME: | H | Gray |
| N | Phosphor Bronze Dome | S | Salmon |
| S | Stainless Steel Dome | | |
| | (Only for 160gf & 260gf) | | |

General Tolerance: ± 0.2 mm

General Specifications:

MATERIALS

- » Contact Disc: Phosphor Bronze with silver cladding
- » Terminal: Brass with silver plated

MECHANICAL

- » Stroke: 0.35 ± 0.1 mm
- » Operation Temperature: -25°C to +70°C
- » Storage Temperature: -30°C to +80°C

ELECTRICAL

- » Electrical Life:
 - Phosphor Bronze Dome: 100,000 cycles for 520gf, 320gf & 260gf
 - 200,000 cycles for 160gf
 - Stainless Steel Dome: 500,000 cycles for 260gf
 - 1,000,000 cycles for 160gf
- » Rating: 50mA, 12VDC
- » Contact Arrangement: 1 pole 1 throw

LEADFREE SOLDERING PROCESSES

- » Wave Soldering: Recommended solder temperature at 260°C max. 5 seconds subject to PCB 1.6mm thickness (for THT).
- » Reflow Soldering: When applying reflow soldering, the peak temperature or the reflow oven should be set to 260°C max. 10 seconds (for SMT).