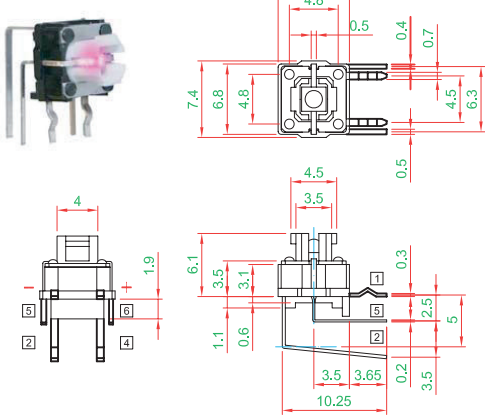


# Tactile Switches

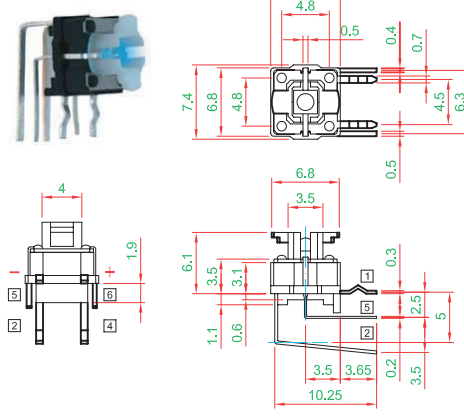
## SPST THT Tactile Switches with LED

## TPI Series

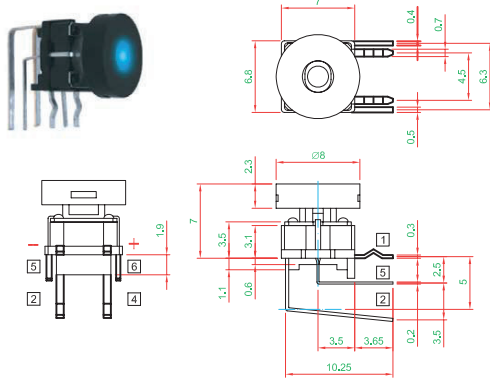
TPIAA...



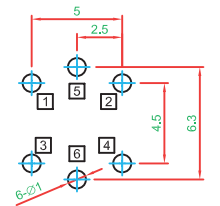
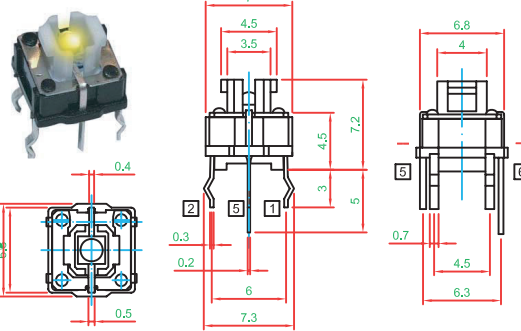
TPIAA1...



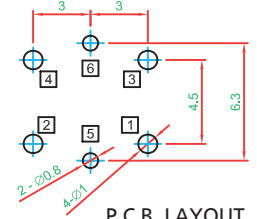
TPIAB... R...



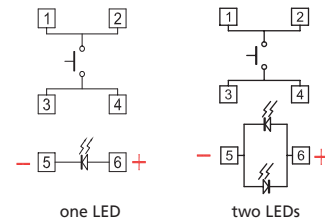
TPIBA...



P.C.B. LAYOUT  
(Right Angle Type)



P.C.B. LAYOUT  
(Top Type)



CIRCUIT DIAGRAM

### How to order:

TPI

#### 1 FRAME TYPE:

- A Right Angle Type
- B Top Type

#### 2 ACTUATOR TYPE:

- A A Type (Standard, no cap)
- A1 A1 Type without Cap (suitable to caps)
- B A1 Type with Cap

#### 3 FIRST ILLUMINATION BRIGHTNESS:

- U Ultra Bright (Standard)
- N No Illumination

#### 4 FIRST ILLUMINATION COLOR:

- G Blue F Green B White
- E Yellow C Red N Without

#### 5 SECOND ILLUMINATION BRIGHTNESS:

- U Ultra Bright (Standard)
- N No Illumination

#### 6 SECOND ILLUMINATION COLOR:

- G Blue F Green B White
- E Yellow C Red N Without

#### 7 CAP:

- R Round Cap for Dot Type Illumination
- T... Round Cap Transparent (see next page)
- N Without Cap

#### 8 COLOR OF CAP (only for R Type Cap):

- H Gray A Black F Green
- E Yellow C Red N No Color (Transparent, only T Type Cap)

### General Specifications:

SWITCH SPECIFICATIONS	
POLE - POSITION	1P1T, Right Angle Push on Type, with or w/o LED are available
CONTACT RATING	12 V DC, 50 mA
CONTACT RESISTANCE	100 mΩ max. 1.5 V DC; 100 mA, by Method of Voltage DROP
INSULATION RESISTANCE	100 MΩ min. 500 V DC
DIELECTRIC STRENGTH	Breakdown is not Allowable; 500 V AC for 1 Minute
OPERATING FORCE	160 ± 50 gf
OPERATING LIFE	500,000 cycles
OPERATING TEMPERATURE RANGE	-20°C ~ 70°C
TOTAL TRAVEL	0.2 ± 0.1 mm

LED SPECIFICATIONS		Value / LED Color				
ATTENTION	Unit	Value / LED Color				
		Blue	Green	Red	White	Yellow
(+) ○ (LEDs are Electrostatic Sensitive devices)	If	30	30	30	30	30
FORWARD CURRENT	mA					
REVERSE VOLTAGE	Vr	5.0	5.0	5.0	5.0	5.0
REVERSE CURRENT	Ir	10	10	10	10	10
FORWARD VOLTAGE@20mA	Vf	3.5-4.0	2.0-2.5	2.0-2.5	3.3-3.8	2.2-2.7
LUMINOUS INTENSITY@20mA	Iv	230	120	50	145	200

### Materials:

Cover: POM  
Actuator: PBT + GF, PA + GF  
Base Frame: PA + GF  
Terminals: Brass with Silver Plating

All specifications are restricted to QA test criteria.  
DRW: D. L. JIN, CHK: D.F. LEE, APP: H.Z. QIU, DC: 2011-11-14

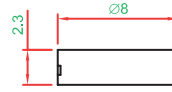
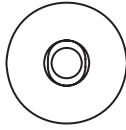
# Tactile Switches

SPST THT Tactile Switches with LED - Caps

TPI Series



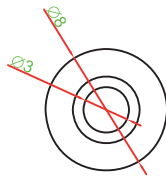
**R**



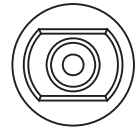
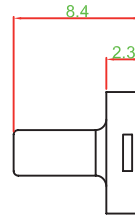
Available in color GRAY, BLACK, GREEN, YELLOW, RED



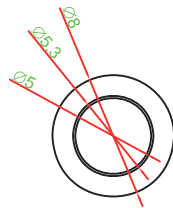
**T2**



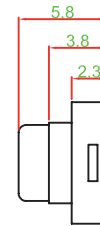
Transparent



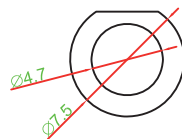
**T3**



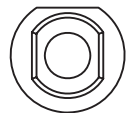
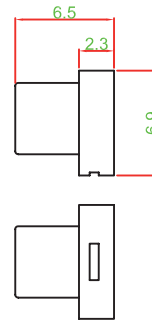
Transparent



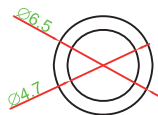
**T4**



Transparent



**T5**



Transparent

